



Of Barnsley, South Yorkshire

British Coach Holidays



ESTABLISHED 1971

2025



52 Market Street, Barnsley, S70 1SN
Telephone 01226 245564

www.kmtravelbarnsley.co.uk

Door to Door Holidays*

*Subject to Area Availability

Welcome to **KM British Coach Holidays 2025**

KM Tours at a Glance 2025



Established in 1971, we are a family run company with over five decades of experience arranging quality coach holidays at affordable prices. Our aim is to provide a range of British coach holidays to suit all pockets.

As a family owned and operated company, we pride ourselves on the high standards offered by our friendly office staff and professional drivers. We continually upgrade our fleet with the most modern coaches, and we will be taking delivery of another Yutong GT12 49 seater executive coach in Spring 2025, ready for the season ahead.

2025 is already looking like it will be our busiest year ever, we shall be visiting our favourite destinations and we have added extra dates and hotels to some of these popular destinations. From the stunning shores of the Isle of Wight to the spectacular Scottish Highlands and everything in between, wherever you choose, you can look forward to meeting new friends and making memories that will last a lifetime.

Booking your holiday couldn't be easier. We accept all major credit and debit cards so you can just give us a call on 01226 245564 and make your reservation by telephone, or why not call into our travel office where our friendly staff will make your reservation.

All our holidays are available to book until the end of 2025 including Christmas and New Year and on behalf of the entire team here at K M we would like to thank you for choosing our 2025 brochure. We look forward to welcoming you aboard in 2025.

Best Wishes, From All the K M Team



JANUARY

Date	Destination, Hotel	Days	Price	Page
M13	Blackpool, Strand Hotel	5	£179	6/7
M20	Blackpool, Strand Hotel	5	£179	6/7
F24	Blackpool, Strand Hotel	4	£159	6/7
M27	Warner Leisure, Corton Coastal Village	5	£249	16/17

FEBRUARY

Date	Destination, Hotel	Days	Price	Page
M03	Blackpool, Queens Hotel (SB)	5	£229	6/7
M03	Weston Super Mare, New Ocean Hotel (Free Bar)	5	£299	28
M03	Warner Leisure, Alvaston Hall Hotel	5	£289	16/17
M10	Babbacombe, Babbacombe Hotel (½ Price Bar)	5	£239	22
M10	Eastbourne, Haddon Hall Hotel (½ Price Bar)	5	£249	19
M10	Paignton, Marine Hotel (Free Bar)	5	£299	23
M10	Warner Leisure, Isle of Wight, Bembridge Coast Hotel	5	£279	16/17
S16	Blackpool, Strand Hotel (½ Price Bar)	5	£189	6/7
M17	Eastbourne, Haddon Hall Hotel (½ Price Bar)	5	£249	19
F21	Llandudno, Kensington Hotel (Reunion)	4	£189	31
M24	Aberfoyle, Rob Roy Hotel	5	£249	34
M24	Great Yarmouth, New Beach Hotel (SB ½ Price Bar)	5	£249	12
M24	Newquay, Eliot Hotel (SB ½ Price Bar)	5	£249	27
TU25	St Agnes, Rosemundy House Hotel	5	£349	27

MARCH

Date	Destination, Hotel	Days	Price	Page
M03	Blackpool, Queens Hotel (SB ½ Bar)	5	£239	6/7
M03	Scarborough, Cumberland Hotel (SB)	5	£269	10
M03	Llandudno, Kensington Hotel	5	£319	31
M03	Warners, Hayling Island, Lakeside	5	£279	16/17
M10	Isle of Wight, Shanklin Hotel (SB)	5	£289	20
M10	Skegness, Royal Hotel	5	£269	11
M10	Weymouth, Royal Hotel	5	£299	21
M10	Warner Leisure, Bodellwydden Castle	5	£339	16/17
M17	Babbacombe, Babbacombe Hotel (½ Price Bar)	5	£249	22
M17	Blackpool, Strand Hotel (½ Price Bar)	5	£209	6/7
M17	Eastbourne, Haddon Hall Hotel (½ Price Bar)	5	£289	19
M17	Torquay, Belgrave Sands Hotel (CB)	5	£379	24/25
M24	Criccieth, George IV Hotel (SB)	5	£269	29
M24	Dunoon, Selborne Hotel (SB Bar Deal)	5	£239	33
M24	St Annes on Sea, Monterey Beach Hotel	5	£279	5
M24	Tenby, Cliffe Norton Hotel	5	£299	30
F28	Blackpool, Strand Hotel	4	£189	6/7
F28	Scarborough, Cumberland Hotel	3	£169	10
M31	Bognor Regis, Royal Norfolk Hotel	5	£309	18
M31	Eastbourne, Haddon Hall Hotel (½ Price Bar)	5	£309	19
M31	Weston Super Mare, New Ocean Hotel (Free Bar)	5	£349	28

APRIL

Date	Destination, Hotel	Days	Price	Page
SA05	Bridlington, Monarch Hotel (SB)	5	£279	10
SA05	Fort William, Croit Anna Hotel (SB Bar Deal)	5	£289	33
M07	Warner Leisure Corton Coastal Village	5	£319	16/17
W09	Bournemouth, Norfolk Royale Hotel	5	£339	21
W09	Great Yarmouth, New Beach Hotel (SB ½ Price Bar)	5	£269	12
SA12	Dunoon, Selborne Hotel (SB Bar Deal)	5	£269	33
SU13	Eastbourne, Haddon Hall Hotel (½ Price Bar)	5	£319	19
SU13	Paignton, Palace Hotel	5	£349	23
M14	St Annes on Sea, Clifton Park Hotel (Mock Cruise)	5	£419	5
F18	Blackpool, Strand Hotel (EW)	4	£219	6/7
M21	Blackpool, Strand Hotel (E)	5	£249	6/7
M21	Eastbourne, Langham Hotel (E)	5	£389	19
M21	Llandudno, Kensington Hotel (E)	5	£349	31
M21	Torquay, Belgrave Sands Hotel (E)	5	£399	24/25
W23	Blackpool, Queens Hotel (SB ½ Price Bar)	5	£269	6/7
SA26	Cromer, Hotel De Paris (SB)	5	£329	12
SU27	Isle of Wight, Shanklin Hotel	7	£449	20
M28	Potters Resorts, Hopton on Sea (AI)	5	£579	14/15
W30	Ilfracombe, Imperial Hotel	5	£289	28

MAY

Date	Destination, Hotel	Days	Price	Page
F02	Blackpool, Strand Hotel (BH)	4	£179	6/7
SU04	Paignton, Palace Hotel	6	£479	23
M05	Blackpool, Strand Hotel	5	£259	6/7
M05	Torquay, Headland Hotel	5	£379	24/25
M05	Weymouth, Berkeley Hotel	5	£329	21
M12	Skegness, Savoy Hotel	5	£375	11
M12	Tenby, Clarence House Hotel	5	£429	30
M12	Torquay, Livermead House Hotel	5	£385	24/25
SA17	Criccieth, George IV Hotel	5	£359	29
SU18	Scarborough, Cumberland Hotel	7	£489	10
M19	Warner Leisure, Nidd Hall	5	£459	16/17
M19	Weston Super Mare, New Ocean Hotel	5	£379	28
F23	Blackpool, Strand Hotel	4	£219	6/7
SA24	Cromer, Hotel De Paris	5	£399	12
SA24	Eastbourne, Haddon Hall Hotel	8	£519	19
M26	Blackpool, Strand Hotel	5	£269	6/7
M26	Paignton, Queens Hotel	5	£359	23

JUNE

Date	Destination, Hotel	Days	Price	Page
SU01	Llandudno, Kensington Hotel	6	£469	31
M02	Blackpool, Park House Hotel (DI)	5	£389	6/7
M02	St Annes on Sea, Monterey Beach Hotel	5	£339	5
W04	Great Yarmouth, New Beach Hotel	5	£369	12
SA07	Isle of Wight, Shanklin Hotel	5	£419	20
SA07	Melrose, Waverley Castle Hotel	5	£369	32
M09	Northumbria, Caledonian Hotel	5	£369	9
M09	Skegness, Royal Hotel	5	£339	11
M09	Stirling, King Robert Hotel	5	£359	34
W11	Weymouth, Royal Hotel	5	£429	21
F13	Paignton, Marine Hotel	8	£529	23
SA14	Eastbourne, Haddon Hall Hotel	6	£459	19
M16	Blackpool, Strand Hotel	5	£279	6/7
M16	Weston Super Mare, New Ocean Hotel	5	£395	28
SA21	Isle of Man, Rutland Hotel	6	£599	9
M23	Babbacombe, Babbacombe Hotel	5	£369	22
M23	St Annes on Sea, Clifton Park Hotel	5	£429	5
M23	Weymouth, Berkeley Hotel	5	£369	21
SA28	Criccieth, George IV Hotel	5	£409	29
M30	Blackpool, Strand Hotel	5	£289	6/7
M30	Potters Resorts, Five Lakes	5	£619	14/15
M30	Skegness, Savoy Hotel	5	£399	11

JULY

Date	Destination, Hotel	Days	Price	Page
W02	Bridlington, Monarch Hotel	5	£399	10
SA05	Weymouth, Royal Hotel	5	£449	21
SU06	Tenby, Clarence House Hotel	6	£539	30
W09	Scarborough, Cumberland Hotel	5	£389	10
SA12	Eastbourne, Haddon Hall Hotel	8	£619	19
SA12	Isle of Wight, Bayshore Hotel	5	£409	20
SA12	Weymouth, Berkeley Hotel	8	£579	21
M14	Blackpool, Strand Hotel	5	£299	6/7
M14	Sidmouth, Royal York & Faulkner Hotel	5	£499	26
F18	Blackpool, Strand Hotel	4	£249	6/7
M21	Morecambe, Auckland Hotel	5	£389	8
M21	Weston Super Mare, New Ocean Hotel	5	£395	28
TU22	Isle of Man, Rutland Hotel	6	£619	9
SU27	Llandudno, Kensington Hotel	5	£389	31
SU27	Porthcawl, Seabank Hotel	7	£549	29
M28	Blackpool, Strand Hotel	5	£299	6/7
M28	Stirling, King Robert Hotel	5	£369	34
M28	Torquay, Headland Hotel	5	£439	24/25

AUGUST

Date	Destination, Hotel	Days	Price	Page
SA02	Weymouth, Berkeley Hotel	8	£579	21
SU03	Ilfracombe, Imperial Hotel	7	£519	28
M04	Blackpool, Park House Hotel (DI)	5	£389	6/7
M04	St Annes, Monterey Beach Hotel	5	£359	5
F08	Blackpool, Strand Hotel (Air Show)	4	£249	6/7
SA09	Cromer, Hotel De Paris	5	£439	12
SU10	Tenby, Clarence House Hotel	6	£539	30
M11	Blackpool, Strand Hotel	5	£299	6/7
M11	Lake District, Crown & Mitre Hotel	5	£409	8
SA16	Bognor Regis, Royal Norfolk Hotel	5	£409	18
SA16	Eastbourne, Haddon Hall Hotel	8	£649	19
SA16	Isle of Wight, Shanklin Hotel	5	£429	20
SU17	Paignton, Palace Hotel	6	£539	23
M18	St Annes on Sea, Clifton Park Hotel	5	£449	5
F22	Blackpool, Strand Hotel (BH)	4	£249	6/7
SU24	Stirling, King Robert Hotel	5	£379	34
M25	Blackpool, Strand Hotel (BH Week)	5	£299	6/7
M25	Paignton, Marine Hotel	5	£409	23
M25	Paignton, Queens Hotel	5	£399	23
W27	Bournemouth, Norfolk Royale Hotel	5	£439	21
F29	Blackpool, Strand Hotel (Illuminations)	4	£249	6/7
SU31	Cromer, Hotel De Paris	7	£559	12

SEPTEMBER

Date	Destination, Hotel	Days	Price	Page
M01	Eastbourne, Haddon Hall Hotel	6	£459	19
M01	Llandudno, Kensington Hotel	5	£379	31
M01	Troon, South Beach Hotel	5	£419	32
W03	Scarborough, Cumberland Hotel	5	£369	10
SA06	Ilfracombe, Imperial Hotel	5	£329	28
M08	Blackpool, Strand Hotel (Illuminations)	5	£299	6/7
M08	Tenby, Clarence House Hotel	5	£459	30
M15	Potters Resorts, Five Lakes	5	£609	14/15
M15	Skegness, Royal Hotel	5	£349	11
M15	Skegness, Savoy Hotel	5	£395	11
M15	Weymouth, Berkeley Hotel	5	£369	21
W17	Dunoon, Selborne Hotel	5	£319	33
SA20	Criccieth, George IV Hotel & Port Merrion Village	5	£359	29
SU21	Isle of Wight, Shanklin Hotel	7	£539	20
M22	Babbacombe, Babbacombe Hotel	5	£369	22
M22	Blackpool, Strand Hotel (Illuminations)	5	£299	6/7

SEPTEMBER

Date	Destination, Hotel	Days	Price	Page
M22	Eastbourne Haddon Hall Hotel	5	£359	19
SA27	Scarborough, Cumberland Hotel	5	£319	10
SU28	Great Yarmouth, New Beach Hotel	7	£419	12
M29	St Annes, Monterey Beach (Illuminations)	5	£359	5
TU30	Looe, Portbyhan Hotel	5	£499	26

OCTOBER

Date	Destination, Hotel	Days	Price	Page
W01	Cromer, Hotel De Paris	5	£349	12
SU05	Fort William, Croit Anna Hotel	7	£399	33
SU05	Exmouth, Cavendish Hotel	7	£439	22
M06	Blackpool Strand Hotel (Illuminations)	5	£299	6/7
M06	Bournemouth, Marsham Court Hotel	5	£419	21
M06	Paignton, Queens Hotel	5	£349	23
SA11	Bognor Regis, Royal Norfolk Hotel	5	£325	18
M13	Isle of Man, Chesterhouse Hotel	5	£479	9
M13	Morecambe, Auckland Hotel	5	£349	8
M13	Tenby, Clarence House House	5	£375	30
M13	Weymouth, Berkeley Hotel	5	£299	21
SU19	Weymouth, Royal Hotel	7	£489	21
M20	Blackpool, Strand Hotel (Illuminations)	5	£299	6/7
M20	Eastbourne, Langham Hotel	5	£395	19
M27	Blackpool, Strand Hotel (Illuminations)	5	£299	6/7
M27	Eastbourne, Haddon Hall Hotel (TT)	5	£389	19
M27	Isle of Wight, Bayshore Hotel	5	£289	20
M27	Llandudno, Kensington Hotel	5	£379	31
M27	Paignton, Marine Hotel (TT)	5	£339	23

NOVEMBER

Date	Destination, Hotel	Days	Price	Page
M03	Blackpool, Strand Hotel (TT)	5	£299	6/7
M03	Criccieth, George IV Hotel (TT)	5	£299	29
M03	Paignton, Palace Hotel (TT)	5	£389	23
M03	Weston Super Mare, New Ocean (TT/FB)	5	£359	28
M10	Dunoon, Selborne hotel (TT)	5	£289	33
M10	Skegness, Savoy Hotel (TT)	5	£369	11
M10	Scarborough, Cumberland Hotel (TT)	5	£309	10
M10	Weymouth, Royal Hotel (TT)	5	£329	21
M17	Blackpool, Strand Hotel (TT)	5	£299	6/7
M17	Exmouth, Cavendish Hotel (TT)	5	£299	22
M17	Great Yarmouth, New Beach Hotel (Thursford)	5	£389	13
M17	St Annes on Sea, Clifton Park Hotel (TT)	5	£439	5
M24	Blackpool, Queens Hotel (TT)	5	£309	6/7
M24	Eastbourne, Haddon Hall Hotel (TT)	5	£389	19
M24	Melrose, Waverley Castle Hotel (TT)	5	£299	32
M24	Potters Resorts, Five Lakes (AI)	5	£599	14/15
M24	Torquay, Belgrave Sands Hotel (TT)	5	£429	24/25
F28	Cromer, Hotel De Paris (Thursford)	4	£359	13

DECEMBER

Date	Destination, Hotel	Days	Price	Page
M01	Cromer, Hotel De Paris (Thursford)	5	£389	13
M01	St Annes, Monterey Beach (TT)	5	£309	5
F05	Blackpool, Strand Hotel (TT)	4	£259	6/7
F05	Criccieth, George IV Hotel (FS)	4	£219	29
F05	Great Yarmouth, New Beach Hotel (Thursford)	4	£349	13
M08	Blackpool, Strand Hotel TT (Xmas Special)	5	£299	6/7
M08	Llandudno, Kensington Hotel (TT)	5	£375	31
F12	Eastbourne, Haddon Hall Hotel (TT)	5	£329	19
SU14	Northumbria, Caledonian Hotel	4	£319	9
M15	Blackpool, Park House Hotel (DI)	5	£359	6/7
M15	Potters Resorts, Hopton on Sea (AI)	5	£579	14/15
TU23	Blackpool, Strand Hotel (Xmas)	5	£580	6/7
TU23	Scarborough, Cumberland Hotel (Xmas)	5	£579	10
SA27	Blackpool, Strand Hotel (Twixmas)	4	£289	6/7
SA27	Blackpool, Queens Hotel (Twixmas)	4	£279	6/7
SA27	Skegness, Royal Hotel (Twixmas)	4	£259	11
TU30	Blackpool, Strand Hotel (NY)	4	£455	6/7
TU30	Blackpool, Park House Hotel (NY)	4	£459	6/7

SB Spring Breakaway
 AI All Inclusive
 DI Drinks Inclusive
 CB Cosy Break
 MD Mother's Day
 EW Easter Weekend
 E Easter
 FB Free Bar
 FD Father's Day
 BH Bank Holiday
 FS Festive Sparkle
 T&T Turkey & Tinsel
 Xmas Christmas
 NY New Year

All prices are per person unless otherwise stated.



Booking

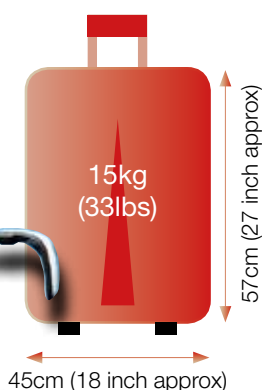
It has never been easier to book with KM Coach Holidays. You are very welcome to call into our Barnsley office where you will be greeted by our friendly, well trained staff who will answer any questions and queries. Alternatively just give us a call on: **Barnsley 01226 245564**

Accessibility

Unfortunately we are no longer able to transport motorised scooters or battery operated wheelchairs. However we are able to transport standard folding wheelchairs and walkers, but due to limited space on board the vehicles we have a limit of two such items. It is essential that we are informed at the time of booking and it is important that passengers check with us about the accessibility of the hotel to prevent any problems.

Luggage

Please note that due to space limitations on board the coach, the vehicles operating our 'Door to Door' service and because of Health & Safety Regulations relating to our employees, you are asked to keep luggage to one medium sized suitcase per person together with hand luggage which can be stored safely under your seat on the coach.



Coaches

On the majority of our tours, for your peace of mind we use our own drivers and our full executive coaches with toilet/washroom and drinks facilities on-board. However, on shorter breaks or for events outside our control, we may occasionally use coaches without such facilities.

Remember

If the price of the holiday is reduced prior to departure you will only have to pay the final price.

Watch out for our great value late availability tours which we will advertise on our website www.kmtravelbarnsley.co.uk

Private Groups

We welcome private groups which we are happy to make arrangements for (ask for details).

Gift Vouchers Available

The Perfect Gift for Birthdays, Christmas & Anniversaries.

Your Financial Security

In order to comply with package tour regulations and to protect clients pre-payments, all monies paid are held in a secure clients account.

In accordance with EC directives, funds would be available to cover refunds and repatriation in the unlikely event that we should cease to trade, thus giving you complete security and peace of mind.

Room Allocation

Every effort will be made to provide precisely the kind of room you have booked and will endeavour to convey special requests to hoteliers. We must stress that we cannot guarantee any requests that are made.

Seat Allocation

Requests for particular seats can be made when booking. Whilst everything possible is done to confirm seating plans shown and to provide the seat numbers booked by clients in the positions indicated and published seating plans, we reserve the right to change should conditions necessitate and we cannot accept bookings conditional on the provision of specific seats.

Important:-

It is now your responsibility to ensure your seat belts are securely fastened all times whilst travelling.

No Smoking or Vaping Policy

For the comfort of all our clients, we do not permit smoking or vaping on board our coaches.

Pick Up Points (within a limited area)

On our tours we offer a door to door service at a small charge. However this service is operated at our discretion and we reserve the right not to provide the service in the event of excessive baggage or unreasonable demands being made of ourselves which would make this service uneconomical or impractical to run (please ask for details).

Special Diets

If you require a special diet you must inform us at least 4 weeks prior to your departure with a copy of that diet. This will be notified to the hotel of your particular holiday and any extra costs incurred must be paid to the hotel by yourself before departure from the hotel. We cannot guarantee hoteliers compliance with dietary requests.

Single Rooms

On any holiday there are only a limited number of single rooms. When a single room is available it may be subject to a supplementary charge and this will be shown on the brochure page.

Local Conditions

During local and national holidays and on certain days of the week, facilities such as theatres, art galleries, museums and shops may be closed. When travelling at the beginning or the end of the holiday season you may also find that resorts are quieter and that some of the facilities are closed.



Just three miles from the bright lights of Blackpool, St. Annes on Sea is worlds apart in both character and atmosphere. Warm and friendly, with a timeless classic style, there is something for all the family. Nestled along a picturesque stretch of coastline lined with well tended lawns, a boating lake and pretty parks, St. Annes on Sea town centre has been completely regenerated over recent years to offer a charming experience. Take a stroll along the promenade and you'll find the beautifully preserved Victorian Pier, originally built in 1885 and now home to amusement rides, shops and a café.

Monterey Beach Hotel

The Monterey Beach is a 32 bedroom family owned and run hotel which offers a warm and friendly atmosphere, situated on the beach front at North Promenade it's within a short walking distance of the pier, shops and cafes. Most of the rooms have views out across the Irish Sea, along with television and tea/coffee making facilities. Please note there is no portage at this hotel.



Departure Date	No of Days	Hotel	Theme	Holiday Price	Single Supp.
Mon 24th Mar	5	Monterey Beach	-	£279	Nil
Mon 14th April	5	Clifton Park	Mock Cruise	£419	Nil
Mon 2nd June	5	Monterey Beach	-	£339	Nil
Mon 23rd June	5	Clifton Park	-	£429	Nil
Mon 4th Aug	5	Monterey Beach	-	£359	Nil
Mon 18th Aug	5	Clifton Park	-	£449	Nil
Mon 29th Sept	5	Monterey Beach	Illuminations	£359	Nil
Mon 17th Nov	5	Clifton Park	Turkey & Tinsel	£439	Nil
Mon 1st Dec	5	Monterey Beach	Turkey & Tinsel	£309	Nil

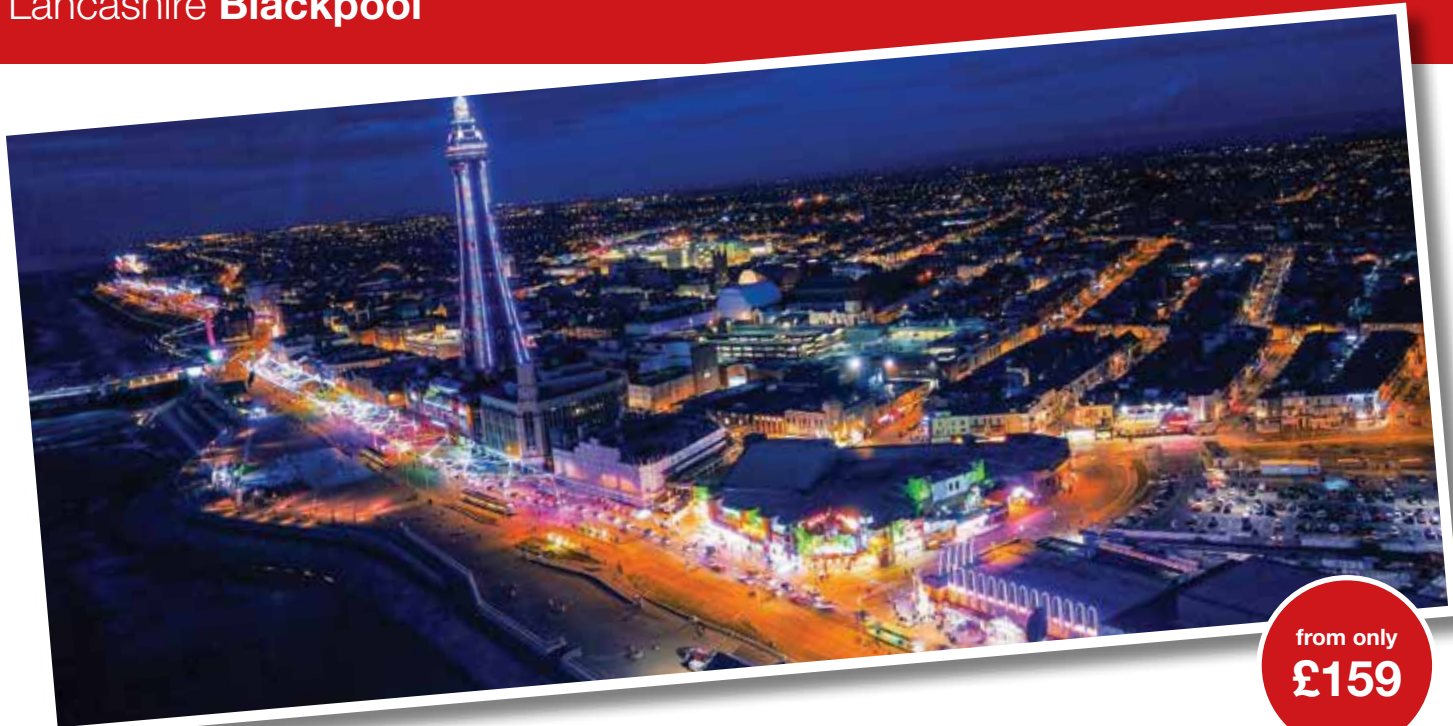
The Clifton Park Hotel

Clifton Park Hotel is renowned for its timeless elegance, superior quality and exemplary service. Centrally located in the stylish seaside town of St Annes on Sea. The hotel provides the best of both comfort and hospitality and is exclusive for adult guests only. The Clifton Park boasts a luxurious heated indoor swimming pool and spa area, 49 en-suite bedrooms each with TV and tea/coffee making facilities. There is a comfortable lounge and private garden. There is regular evening entertainment.



Price Includes:

- Half Board Accommodation (17 November Clifton Park Hotel Turkey & Tinsel - Half Board plus one lunch).
 - Excursions to:
Monterey Beach Hotel - Fleetwood/Cleveleys & Affinity Fleetwood or Blackpool & Southport plus illuminations tour September 29th.
Clifton Park Hotel – Cleveleys and Affinity Fleetwood and the Lake District (April, June & August Departures). November Departure (Turkey & Tinsel) Cleveleys & Affinity Fleetwood & Southport.
- Itinerary may be subject to change on themed breaks



from only
£159

With a vibrant nightlife, world class shows and the UK's most famous theme park, the nation's favourite holiday resort is unrivalled throughout the world for its popularity. Blackpool continues to attract millions of visitors appealing to everyone, both young and old with a wealth of attractions. With miles of golden sandy beaches broken only by the three piers, whether you're looking for thrills and excitement, family entertainment, historic gems or beautiful gardens, Blackpool has it all. As well as the new seafront there is a huge range of year round attractions including the award winning zoo, Sandcastle Waterpark, Tower Dungeons, Sealife Centre, atmospheric trams, horsedrawn carriages and of course, the Tower Circus.

Why not take a visit to Stanley Park with its showpiece Italian Gardens and boating lake. Blackpool boasts seemingly endless evening entertainment with splendid theatres including the Grand Theatre, the Winter Gardens and the Tower Ballroom all hosting major international artists and national events.

The Strand Hotel

Where comfort meets elegance, a warm welcome awaits you at the Strand Hotel. Having undergone refurbishment during 2020, the Strand is a beautiful hotel that covers every aspect of your stay. Situated on the North Promenade, the restaurant and bar located on the first floor has a spectacular view, overlooking the Irish Sea with the food and drink served being carefully crafted to meet the needs of guests young and old. The boutique bar lounge has live entertainment. All bedrooms are tastefully decorated and the lift serves all floors (unfortunately the lift is unable to accommodate a wheelchair with a seated person).



The Park House Hotel

One of Blackpool's premier hotels, located on Blackpool's prestigious North Promenade, is within walking distance of the town centre and all major attractions. Two lifts serve all floors. There is entertainment each evening in either the bar lounge or the elegantly decorated ballroom or simply relax in the 80 feet long, sun lounge overlooking the Irish Sea. All 103 en-suite bedrooms have television and tea/coffee making facilities.





The Queens Hotel

Ideally situated on South Promenade between central and south piers, the Queens Hotel is one of Blackpool's larger hotels. It overlooks the Irish Sea and is only a ten minute walk from the famous Pleasure Beach. Generously sized public areas include attractive lounges and an intimate bar. All 117 bedrooms have tea/coffee making facilities, hairdryer and television. There is entertainment most evenings.



Price Includes:

- Half Board or as specified
- Excursions:
Itinerary 1 – Cleveleys & Fleetwood/Lytham St Annes/St Annes on Sea
Itinerary 2 – Liverpool & Cleveleys/Fleetwood
Itinerary 3 – Liverpool
Itinerary 4 – Southport, Cleveleys & Fleetwood
Itinerary 5 – Cleveleys/Fleetwood
Itinerary 6 – Cleveleys/Fleetwood & trip through the illuminations
Itinerary 7 – Southport, Cleveleys/Fleetwood & trip through the illuminations
- *Please note there will be no excursions on Blackpool Weekends of up to 3 nights unless otherwise specified.
- Queens Hotel - Spring Breakaway includes a complimentary glass of wine, beer or a soft drink with dinner each evening.
- Queens Hotel - Half Price Bar offer on all tours up to the end of April 2025 – please note that the half price bar promotion is only valid on selected drinks.
- Park House Hotel includes a free bar Monday – Thursday 3.00pm – 10.00pm on the date of arrival & 12.00pm – 10.00pm on other days – selected drinks only. Please note excludes New Year Tour 30/12/25.
- Strand Hotel – half price bar each evening on selected January – March 2025 dates only (see individual tour for details, exclude Mother's Day Weekend) – selected drinks/house brands only.

Departure Date	No of Days	Hotel	Theme	Itinerary	Holiday Price	Single Supp.	Sea View
Mon 13th Jan	5	Strand	Variety /Half Price Bar	2	£179	£20	£14
Mon 20th Jan	5	Strand	Variety /Half Price Bar	2	£179	£20	£14
Fri 24th Jan	4	Strand	Half Price Bar with Liverpool Excursion	3	£159	£15	£10.50
Mon 3rd Feb	5	Queens	Spring Breakaway /Half Price Bar	4	£229	Nil	£28
Sun 16th Feb	5	Strand	Half Term Break /Half Price Bar	2	£189	£20	£14
Mon 3rd March	5	Queens	Spring Breakaway /Half Price Bar	2	£239	Nil	£28
Mon 17th March	5	Strand	Half Price Bar	4	£209	£20	£14
Fri 28th March	4	Strand	Mother's Day Weekend	-	£189	£15	£10.50
Fri 18th April	4	Strand	Easter Weekend	-	£219	£15	£10.50
Mon 21st April	5	Strand	Easter Week	4	£249	£20	£14
Wed 23rd April	5	Queens	Spring Breakaway /Half Price Bar	2	£269	Nil	£28
Fri 2nd May	4	Strand	Early Bank Holiday Special	4	£179	£15	£10.50
Mon 5th May	5	Strand	May Day Bank Holiday Week	4	£259	£20	£14
Fri 23th May	4	Strand	Weekend Break	-	£219	£15	£10.50
Mon 26th May	5	Strand	Bank Holiday Week	4	£269	£20	£14
Mon 2nd June	5	Park House	Drinks Inclusive*	2	£389	Nil	On Request
Mon 16th June	5	Strand		4	£279	£20	£14
Mon 30th June	5	Strand		2	£289	£20	£14
Mon 14th July		Strand		4	£299	£20	£14
Fri 18th July	4	Strand		-	£249	£15	£10.50
Mon 28th July	5	Strand		2	£299	£20	£14
Mon 4th Aug	5	Park House	Drinks Inclusive*	4	£389	Nil	On Request
Fri 8th Aug	4	Strand	Air Show*	-	£249	£15	£10.50
Mon 11th Aug	5	Strand		4	£299	£20	£14
Fri 22nd Aug	4	Strand	Bank Holiday Weekend	-	£249	£15	£10.50
Mon 25th Aug	5	Strand	Bank Holiday Week	2	£299	£20	£14
Fri 29th Aug	4	Strand	Illuminations	6	£249	£15	£10.50
Mon 8th Sep	5	Strand	Illuminations	7	£299	£20	£14
Mon 22nd Sep	5	Strand	Illuminations	7	£299	£20	£14
Mon 6th Oct	5	Strand	Illuminations	7	£299	£20	£14
Mon 20th Oct	5	Strand	Illuminations	7	£299	£20	£14
Mon 27th Oct	5	Strand	Illuminations	7	£299	£20	£14
Mon 3rd Nov	5	Strand	Turkey & Tinsel	1	£299	£20	£14
Mon 17th Nov	5	Strand	Turkey & Tinsel	1	£299	£20	£14
Mon 24th Nov	5	Queens	Turkey & Tinsel Plus one lunch	1	£309	£36	£28
Fri 5th Dec	4	Strand	Turkey & Tinsel	5	£259	£15	£10.50
Mon 8th Dec	5	Strand	Turkey & Tinsel	1	£299	£20	£14
Mon 15th Dec	5	Park House	Turkey & Tinsel Drinks Inclusive*	1	£359	Nil	On Request
Tues 23rd Dec	5	Strand	Christmas	TBA	£580	£20	£14
Sat 27th Dec	4	Queens	Twixmas	TBA	£279	£27	£21
Sat 27th Dec	4	Strand	Twixmas	TBA	£289	£15	£10.50
Tues 30th Dec	4	Park House	New Year	TBA	£459	Nil	On Request
Tues 30th Dec	4	Strand	New Year	TBA	£455	£15	£10.50

Itinerary may be subject to change on themed breaks.



from only
£349

Situated on the edge of the famous Morecambe Bay, with stunning panoramic views across the bay and beyond to the rolling Lakeland hills, Morecambe is once again becoming one of the nation's best loved resorts and the perfect place for a traditional seaside holiday. A multi million pound renovation project has helped return the town to its former popularity and it is now a vibrant, modern resort with miles of level promenade, traditional courtesy and hospitality plus all year round entertainment. It can also boast great shopping with an Arndale Centre and the famous 'Festival Market' on the promenade.

Auckland Hotel

A family owned and run hotel situated on Morecambe's central promenade, offering a warm welcome and personal service. The Auckland Hotel is well placed for all the resort's main amenities and provides regular entertainment. There is a sun lounge, separate television lounge and a lounge bar with a relaxed atmosphere. All bedrooms are equipped with television and tea/coffee making facilities.



Departure Date	No of Days	Holiday Price	Single Supplement
Mon 21st July	5	£389	Nil
Mon 13th October	5	£349	Nil

Price Includes:

- Half Board Accommodation
- Excursions The Lake District & Lancaster



only
£409

Home of Beatrix Potter, dramatic landscapes and a fascinating history, the Lake District is England's largest National Park, famous for its lakes, forests and mountains including Scafell Pike, the highest in England. It also boasts the deepest and largest lakes in England, Wast Water and Windermere. Our base for this tour is Carlisle, a city and county town of Cumbria that was established originally as a Roman settlement to serve the forts on Hadrian's Wall. Today the city lies at the heart of a wealth of historic and modern attractions. From Roman civitas to Norman stronghold, medieval market town to contemporary city, Carlisle offers a huge choice of attractions to enjoy including museums, art galleries, outdoor and indoor recreation, award winning parks and relaxing open spaces. Not to mention the gateway to the stunning Lake District.

Crown and Mitre Hotel

Located in the heart of historical Carlisle, the Crown and Mitre is one of the Peel group of hotels and offers the perfect mix of Edwardian grandeur, beautiful original features including a real log fire and elegant sweeping staircase plus all the comforts of home to create a relaxed and friendly atmosphere. The hotel boasts 94 bedrooms, all with en-suite facilities, television, tea/coffee making facilities and hairdryer. Amenities include restaurant, two bars, indoor swimming pool and Jacuzzi. A lift serves most bedrooms.

(Please note no entertainment during this tour)



Departure Date	No of Days	Holiday Price	Single Supplement
Mon 11th August	5	£409	£64

Price Includes:

- Half Board Accommodation
- Excursions to Ullswater and Keswick

Isle of Man



from only
£479

Famed for its friendliness and laid-back warmth, don't be fooled by the size of the Isle of Man. Just 33 miles long and 13 miles wide, this tiny island has a rich past steeped in myths and legends and is home to an unusual variety of attractions; ancient fortresses, a working Victorian Railway, seas full of wrecks, fields full of rare orchids, the world's largest water wheel and of course, world class road racing events. The island also has its own parliament, laws, traditions, its own postage stamps, currency and Manx language, although English is the spoken language and sterling is accepted throughout. Douglas, the island's capital is the ideal spot from which to explore. It has a Victorian Promenade which overlooks the stunning crescent of Douglas Bay and there is plenty to occupy here including a busy harbour, shops, bars, cafes plus many historical buildings and the Douglas Horse Tram which runs along the seafront.

Rutland Hotel

Situated on the Queens Promenade in Douglas. The Rutland enjoys beautiful panoramic views across Douglas Bay and is only a short walk to the town centre. The Rutland has 64 en-suite bedrooms. Offering a full range of modern facilities and accessories, rooms at the 3 star Rutland offer both great value and a quiet location. Guests enjoy complimentary Wi-Fi and the restaurant offers a buffet breakfast and into the evenings a hearty Manx roast with a separate residents bar and entertainment 2 evenings during your stay.

Chesterhouse Hotel

Ideally located on the seafront in Douglas and close to the town centre, facilities at the Chesterhouse Hotel include a lift, 2 evening's entertainment in the Amber Bar and Lounge plus the 'Shiraz' restaurant serving an excellent menu of traditional dishes whilst offering splendid panoramic views across the bay to the Irish Sea. There are 67 bedrooms, all of which are en-suite with TV, telephone and tea making facilities.

Departure Date	No of Days	Hotel	Holiday Price	Single Supplement.
Sat 21st June	6	Rutland	£599	£80
Tues 22nd July	6	Rutland	£619	£80
Mon 13th Oct	5	Chesterhouse	£479	£64

Rutland Hotel Sea View Supplement - £100.00 per room
Chesterhouse Hotel Sea/Premium Room Supplement - £120 per room
(both subject to availability)

Price Includes:

- Half Board Accommodation
- Return Ferry Crossing Douglas/Heysham
- Excursions – 6 day tour will include two full day and one half day excursion, 5 day tour will include one full day and one half day excursion.

Northumbria



only
£369

Beamish and Holy Island

With its wild landscapes and dramatic coastline, Northumberland is undoubtedly one of the most beautiful counties in England. Dominated by imposing castles, the enchanting coastline has great sweeps of sandy beaches and sheltered bays interrupted by high jutting cliffs. Beamish is a world famous open air museum which brings the history of the North East to life with amazing sights, sounds and tastes of the past. The delightful unspoiled Holy Island lies just off the extreme northeast corner of England. A tidal island that is accessed by a paved causeway which is covered by the North Sea twice every day, Lindisfarne is famous both for its medieval religious heritage and its more recent picturesque 16th century castle.

Caledonian Hotel

Set in the heart of Jesmond, a chic and leafy area just one mile from Newcastle city centre with a vibrant bar and café culture, the Caledonian is a comfortable, friendly hotel combining Georgian architecture with a contemporary edge. The hotel boasts a small lounge area near the reception and the Billabong Bar and Bistro offers a pleasant atmosphere. The hotel boasts 91 bedrooms, all of which are en-suite with bath or shower, satellite TV, direct dial telephone, hair dryer and tea/coffee making facilities (Please note no entertainment during this tour).



Departure Date	No of Days	Holiday Price	Itinerary	Single Supp.
Mon 9th June	5	£369	1	£80
Sun 14th Dec	4	£319	2	£60

Price Includes:

- Half Board Accommodation
- Itinerary 1 - Excursions to Beamish (entrance included in the cost of the tour) and the Holy Island of Lindisfarne, plus the City of Durham en-route.
Itinerary 2 - Excursions to include entrance to Beamish and the Alnwick Xmas Light Trail.

North Yorkshire **Scarborough**



from only
£169

Now a thriving fishing community located on Yorkshire's stunning coastline, Scarborough is arguably one of England's oldest seaside resorts becoming a holiday destination over 400 years ago when the health properties of the Spa waters were discovered. The undisputed 'Queen of the Yorkshire Coast', the town stands between two splendid bays divided by a rugged headland on which sit the remains of a medieval castle. Scarborough offers a wealth of attractions including theatres, parks, cafes, and a vibrant nightlife. The colourful working harbour is a hive of activity whilst the majestic Victorian promenade sweeps between the bays. There are a wide variety of shops to suit all tastes plus stunning floral gardens, in particular South Cliff and the remarkable Peasholm Park with its oriental influences.

Cumberland Hotel

Extremely well situated on the South Cliff, the three star Cumberland Hotel is just a few minutes' walk from the Spa Complex, beach and town centre and affords excellent views of the town from the north facing rooms. Amenities at the hotel include an attractive restaurant, quiet lounge and bar lounge with large dance floor where entertainment is provided most evenings. The Cumberland boasts 86 bedrooms, all of which are equipped with central heating, bath or shower and WC, tea/coffee making facilities, hairdryer and TV with radio channels. There is free wi-fi in public areas and a lift serves all floors (few additional stairs to some rooms).

Departure Date	No of Days	Theme	Board Basis	Holiday Price	Single Supp.
Mon 3rd March	5	Spring Breakaway	Half Board	£269	Nil
Fri 28th March	3	Spring Breakaway/ Mother's Day Weekend	Half Board	£169	Nil
Sun 18th May	7	-	Half Board	£489	£78
Wed 9th July	5	-	Half Board	£389	£52
Wed 3rd Sept	5	-	Half Board	£369	£52
Sat 27th Sept	5	-	Half Board	£319	£52
Mon 10th Nov	5	Turkey & Tinsel	Half Board Plus One Lunch	£309	£36
Tues 23rd Dec	5	Christmas	Half Board Plus One Lunch	£579	£36

Price Includes:

- Accommodation as specified
(Spring Breakaway also includes a complimentary glass of wine, beer or a soft drink with dinner each evening)
- Excursions to Bridlington & Whitby (5 days) plus York (7 days)
(28 Mar - Mother's Day Weekend Mystery Excursion on return journey Sunday 30 Mar)

East Yorkshire **Bridlington**



from only
£279

Bridlington has an historic old town, long promenade, sandy beach and cliff top walks with views of the trawler port. With its sandy beaches, award winning promenades and historic harbour, Bridlington is a hidden seaside gem awash with traditional entertainment.

Monarch Hotel

Located in a prominent seafront location on Bridlington's South Beach, the Monarch Hotel offers breathtaking panoramic sea views in a peaceful setting. Situated close to the Spa Theatre and a short walk to the bustling fishing harbour which is alive the colourful trawlers and pleasure boats, the Monarch is the perfect base for exploring Bridlington. The hotel features an onsite restaurant and comfortable bar area, as well as a good-sized dance floor where entertainment is regularly featured. A lift serves 5 out of 7 floors. All 41 bedrooms are en-suite have tea/coffee making facilities, hairdryer and television.



Departure Date	No of Days	Theme	Holiday Price	Single Supplement	Sea View Supplement (Per Person)
Sat 5th April	5	Spring Breakaway	£279	Nil	£28
Wed 2nd July	5	-	£399	£52	£48

Price Includes:

- Half Board Accommodation
5th April - Spring Breakaway includes a complimentary glass of wine, beer or soft drink each evening.
- Excursions to Scarborough & Filey/Flamborough



from only
£259

Skegness is one of the UK's top seaside resorts and has an abundance of attractions that appeal to all ages. Small enough to offer a friendly atmosphere but large enough to provide hours of entertainment for young and old alike, Skegness burst into life in the 1870s with the arrival of the train and soon became the successful seaside town we know today, also giving rise to its best known icon - the Jolly Fisherman. The largest resort on this coastline, Skegness boasts miles of award winning golden sandy beaches plus great attractions along the promenade and seafront. Just a few of the highlights include Natureland Seal Sanctuary and Animal Centre, crazy golf, ten pin bowling, the pier, amusements, not to mention the beautifully landscaped gardens that are the envy of the east coast. Nightlife in the resort is varied with a wide selection of bars and restaurants plus a great choice of entertainment including exciting shows and cabarets.

Departure Date	No of Days	Hotel	Theme/ Itinerary	Holiday Price	Single Supp.
Mon 10th March	5	Royal	Spring Special 1	£269	£20
Mon 12th May	5	Savoy	2	£375	Nil
Mon 9th June	5	Royal	2	£339	£20
Mon 30th June	5	Savoy	2	£399	Nil
Mon 15th Sept	5	Royal	2	£349	£20
Mon 15th Sept	5	Savoy	2	£395	Nil
Mon 10th Nov	5	Savoy	Turkey & Tinsel 1	£369	Nil
Sat 27th Dec	4	Royal	Twixmas 3	£259	£15

Price Includes:

- Half Board accommodation
- Excursions to include:
Itinerary 1 - Louth & Springfields Shopping Outlet
Itinerary 2 - Mablethorpe/Louth & Springfields Shopping outlet
Itinerary 3 - Springfields Shopping Outlet
(May – September departures calling at Cleethorpes en-route)

Itinerary may be subject to change on themed breaks.

Royal Hotel

An elegant late Victorian hotel, the Royal Hotel has its own grounds established within a quiet area of Skegness and minutes' walk away from the hustle and bustle of all attractions. All bedrooms have en-suite facilities with either shower room or shower over bath and Freeview television. The hotel has 2 bars, restaurant and well equipped games room, the Lounge bar offers views towards the sea and overlooking the gardens.

Savoy Hotel

Enjoying an excellent Central Promenade location, the Savoy is one of the resort's premier hotels and is an ideal base to explore many local attractions including the wonderful golden beach, the Embassy Theatre and tournament standard bowling greens. One of Skegness' largest hotels, the Savoy offers 48 stylish bedrooms, all furnished to a very high standard and fully equipped with full en-suite facilities, flat screen digital televisions, electric radio/alarm clocks, hairdryers and hot drink selection. One of the most outstanding attractions at the Savoy Hotel is the excellent dining facilities in the beautiful sea front restaurant where experienced chefs have earned an exceptional reputation for providing sumptuous home cooked, traditional food using only the finest of Lincolnshire produce. Enjoy a drink and meet new friends in the contemporary Savoy Lounge and Bar and relax in comfort to live professional entertainment during the holiday season. The lift serves two floors (unfortunately the lift is unable to accommodate a wheelchair with a seated person).





from only
£249

The popular coastal town of Great Yarmouth is East Anglia's top seaside venue. Set on fifteen miles of wide, flat golden sand with a lively promenade, the town boasts a wealth of excellent entertainment and recreational facilities, sports and shopping. There are two piers, a model village, Butterfly Centre and Sealife Centre to name but a few. Take a stroll along the promenade or take a ride in one of the unique horse-drawn landaus. At night the resort is illuminated and is renowned for its live entertainment with a wide variety of shows and concerts. The main shopping streets can be found just off the ancient harbour and offer a pleasant mix of high street stores and traditional seaside shops. The miles of golden sandy beaches have won numerous awards for cleanliness and both the attractive Anchor Gardens and St. Georges Park provide seating for moments of relaxation.

New Beach Hotel

One of the Leisureplex group of hotels, the New Beach Hotel is ideally located in Great Yarmouth's most central location, on the sea front opposite the Britannia Pier and adjacent to the shops and resort amenities. The hotel boasts 75 bedrooms, all of which are equipped with bath or shower and WC, central heating, tea/coffee making facilities, internal phone, hairdryer and TV. Facilities include a spacious cocktail bar/lounge, magnificent restaurant, large dance floor and entertainment most evenings. There is free wi-fi in public areas and a small lift serves most rooms.

Departure Date	No of Days	Theme	Board Basis	Holiday Price	Single Supp.	Sea View
Mon 24th Feb	5	Spring Breakaway Half Price Bar Deal	Half Board	£249	Nil	£28
Wed 9th April	5	Spring Breakaway Half Price Bar Deal	Half Board	£269	Nil	£28
Wed 4th June	5	-	Half Board	£369	£52	£48
Sun 28th Sept	7	-	Half Board	£419	£78	£72

Price Includes:

- Accommodation/Board as specified (Spring Breakaway 24th February & 9th April also includes complimentary glass of wine, beer or a soft drink with dinner each evening/half price bar 7.00pm - 11.00 p/m each evening. Available on selected drinks, house brands only).
- Excursions to Norwich, Lowestoft & Southwold plus Norfolk Broads (7 days).

Itinerary may be subject to change on themed breaks.



from only
£329

Set amidst the pleasant countryside of North Norfolk, Cromer is a vibrant town with a wide variety of attractions. The quaint narrow Victorian streets are home to some delightfully atmospheric pubs and there is a wealth of traditional seaside shops, restaurants and galleries. Once a small fishing village, Cromer became a distinctly upper class holiday resort during the Victorian era when it became a favourite destination for royalty. Full of character, narrow twisting streets and a lovely promenade overlook its sandy beach. Relax in the colourful gardens or take advantage of one of the many leisure activities on offer including bowling green, tennis courts, pitch and putt or maybe take in a show at the famous Pier Pavilion. As you would expect of a seaside town, Cromer is rich in fishing heritage and is world famous for its tasty crabs. The town has a proud tradition of the RNLI service and it has been said that the lifeboat is the lifeblood of Cromer – the museum offers a great insight into the service's history.

Hotel De Paris

A delightful and unusual Grade II listed building, the three star Hotel de Paris occupies one of the finest positions in Cromer, close to the shops and historic parish church and overlooking the beach and pier. The delightful restaurant is split into two sections with interesting stained glass windows and a small dance floor with entertainment most evenings. Other facilities include a magnificent reception lounge with splendid architectural detail, attractive bar overlooking the sea, small TV lounge and games room with pool, table tennis and darts. There is a lift in the hotel (although there are steps throughout and some bedrooms are accessible via stairs). All bedrooms are equipped with bath or shower and WC, tea/coffee making facilities, hairdryer and Freeview TV with radio channels.

Departure Date	No of Days	Theme	Board Basis	Holiday Price	Single Supp.	Sea View
Mon 26th April	5	Spring Breakaway	Half Board	£329	Nil	£28
Sat 24th May	5	-	Half Board	£399	£52	£48
Sat 9th Aug	5	-	Half Board	£439	£52	£48
Sun 31st Aug	7	-	Half Board	£559	£78	£72
Wed 1st Oct	5	-	Half Board	£349	£36	£28

Price Includes:

- Accommodation as specified (Spring Breakaway includes complimentary glass of wine, beer or a soft drink with dinner each evening).
- Excursions to Norwich and Norfolk Coast (5 days) plus Great Yarmouth (7 days).

Thursford Christmas Spectacular



One of the largest shows of its kind in Europe, Thursford Christmas Spectacular is an event not to be missed. Set in the magical surroundings of mechanical organs and fairground carousels, with a cast of 130 professional singers, many of whom are West End performers, the three hour performance delivers an extravaganza of non-stop singing, dancing, music, humour and variety. It is a fast moving celebration of the festive season featuring a mix of both seasonal and year round favourites, with famous and much loved chart toppers being sung alongside traditional carols.



Departure Date	No of Days	Hotel	Holiday Price	Single Supp.	Sea View
Mon 17th November	5	New Beach	£389	£36	£28
Fri 28th November	4	Hotel De Paris	£359	£27	£21
Mon 1st December	5	Hotel De Paris	£389	£36	£28
Fri 5th December	4	New Beach	£349	£27	£21

Price Includes:

- Half Board Accommodation
- Entrance Ticket to Thursford Christmas Spectacular



only
£579

Potters Resorts

QUALITY TIME TOGETHER



The UK's Only All Inclusive Short Breaks Now Exclusively for Adults

With two resorts to choose from, you can join us for a short break on the picturesque Norfolk coast where you can breathe in the fresh sea air or relax in 320 acres of parkland in the glorious Essex countryside.



Potters Resorts Hopton on Sea, Norfolk

All break prices include Bungalow accommodation as standard, with great value upgrades to Bungalow Plus or Hotel rooms.

The wide variety of quality accommodation available, ranging from Bungalows stretching down to the sea, to hotel rooms surrounding the central facilities, means that you won't have any trouble finding the perfect room for you and your party. All our rooms offer an en-suite bathroom, TV with Freeview channels, tea and coffee making facilities and free Wi-Fi. You can even enjoy live streamed entertainment in your accommodation via our 'Potters Live' channel. Access to all the entertainment venues is included free to enjoy throughout your break. With the Atlas Theatre, Garden Bar, and the outdoor South Terrace stages, you're never far away from the action.

Every break at Potters Resorts is unashamedly full board which means four meals on each full day, each offering a wide selection to suit every appetite including a late night snack before you either retreat for the evening, or continue your night in style.

The drinks menu features a generous selection of popular premium branded beers, wines, spirits and soft drinks, plus many varieties of hot drinks.

Drinks are included from 3pm on arrival day and from 8.30 am on each full day until close of bars and up to 10.30am on you day of departure.



Essex Five Lakes

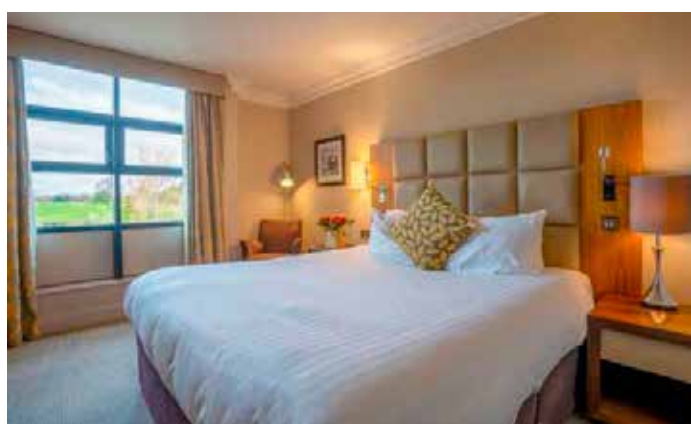


from only
£599

Potters Resorts Five Lakes, Essex

Offering All-Inclusive short breaks designed for adult throughout the year. Five Lakes is the perfect place to relax and unwind with an exciting variety of activities, first-class entertainment and delicious food and drink. And the best bit? It's all included in the price.

Every break includes Premier Rooms as standard. Enjoy peace and quiet in the Village rooms set in the grounds, just a short walk from the hotel, or choose the hotel rooms surrounding the central facilities. With a choice of twin and double accommodation available, all our rooms offer an en-suite bathroom, TV with premium channels including Sky Sports, tea and coffee making facilities, a safe for your valuables, a hairdryer, iron and ironing board, drinks cooler, essential toiletries, and free Wi-Fi. At Five Lakes all break prices include Premier accommodation in either the Village or Hotel as standard, with great value upgrades ranging from Premier Plus or Hotel Suites.



Departure Date	No of Days	Resort	Holiday Price	Single Supp.
Mon 28th April	5	Hopton on Sea	£579**	Nil
Mon 30th June	5	Five Lakes	£619***	N/A
Mon 15th Sept	5	Five Lakes	£609***	N/A
Mon 24th Nov*	5	Five Lakes	£599***	N/A
Mon 15th Dec*	5	Hopton on Sea	£579**	Nil

*November Five Lakes Festive Special/December Hopton on Sea Festive Special.

**Hopton on Sea Prices are based on standard bungalow accommodation. Upgrade to Bungalow plus for supplement of £20 per person.

***Five Lakes Prices based on village premier accommodation or hotel premier. Upgrade to village premier plus/hotel premier plus/hotel deluxe for a supplement of £40 per person.

Each departure also includes 2 excursions.



Adult Only UK Breaks

Always something to enjoy! From castles and country houses to coastal retreats, every Warner break makes it easy to relax in fantastic accommodation. With delicious menus plus providing a wide variety of activities and entertainment to enjoy, quizzes, competitions and dancing plus varied entertainment, with a fantastic line up of visiting artists on every break, with live performances by the superb Warner Theatre Company. There are so many reasons to join us for a Warner Break.

Choose from one of our great variety of adult-only breaks with plenty included in the price. Then you decide how to enjoy your time.



Alvaston Hall

A grade II listed Victorian property. Alvaston Hall is a half-timbered country house hotel with award winning gardens and bundles of history. Set in a beautiful location close to the riverside town of Nantwich. With over 250 individual bedrooms waiting to welcome you boasting a blend of home comforts and distinctive features. Leisure facilities include a heated indoor swimming pool, sauna, steam room and fitness centre.

Bembridge Coast, Isle of Wight

An elegant hotel ideal for exploring the Isle of Wight with magnificent views of the solent, just a stone's throw away from the beach. Facilities include an heated indoor swimming pool, sauna, steam room, cinema room, walled garden and wooded walking area. (Some rooms may be allocated in chalet accommodation outside the main hotel with single rooms being located in the Mews.



Bodelwydden Castle, North Wales

Close to the North Wales Coast and Snowdonia National Park, built in the 15th century, today it provides the perfect balance between romantic castle and contemporary hotel. With varied day time activities to choose from or relax in the heated swimming pool and steam room. There is evening entertainment each evening. There are over 200 individual bedrooms waiting to welcome you. Complimentary amenities include WiFi, plush towels, a television, hairdryer, comfortable seating and reading lights and tea/coffee facilities and fishing lake. There's a quaint country courtyard for drinks in the fresh air and a short stroll through manicured grounds will take you to a lovely church.



Corton Coastal Village, Suffolk

A coastal break with quaint chalets providing expansive sea views, situated in a beautiful location near the famous Southwold. Facilities include a heated indoor swimming pool, sauna, steam room, cinema room, games room and beach garden. Chalets have a cosy ambience guaranteeing a restful night's sleep. Complimentary amenities include WiFi, plush towels, a television, hairdryer, comfortable seating and reading lights and tea/coffee making facilities. A wide variety of daytime activities and entertainment each evening.



Lakeside Coastal Village, Hampshire

A traditional seaside escape on Hampshire's lively Hayling Island offering a welcoming village atmosphere. A beautiful location near Arundel Castle, Portsmouth and Chichester harbour. A charming village with an array of cafes and bars with a bright courtyard at its centre. Facilities include an heated indoor swimming pool, sauna, steam room, cinema room and games room. With over 220 chalet style bedrooms set over 32 acres, all a short distance from a fishing lake, woodland oasis and the call of the ocean. Complimentary amenities include Wi-Fi, plush towels, a television, hairdryer, comfortable seating and reading lights and tea/coffee making facilities.



Nidd Hall, North Yorkshire

This potpourri of architectural styles is a peaceful and relaxing escape at the edge of the Yorkshire Dales, with beautifully landscaped gardens and fishing lake. There's a quaint country courtyard for drinks in the fresh air and a short stroll through manicured grounds will take you to a lovely church.



Departure Date	No of Days	Hotel/ Village	Theme	Holiday Price	Single Supp.
Mon 27th Jan	5	Corton Coastal Village	Mid-week Variety	£249	On Request
Mon 3rd Feb	5	Alvaston Hall	Mid-week Variety	£289	On Request
Mon 10th Feb	5	Bembridge Coast	Mid-week Variety	£279	On Request
Mon 3rd March	5	Lakeside Coastal Village	Mid-week Variety	£279	On Request
Mon 10th March	5	Bodelwydden Castle	Mid-week Variety	£339	On Request
Mon 7th April	5	Corton Coastal Village	Mid-week Variety	£319	On Request
Mon 19th May	5	Nidd Hall	Mid-week Variety	£459	On Request

All breaks include:

- Bed, Breakfast and Dinner
- All evening entertainment
- Activities
- Leisure facilities
- Two excursions

Please note Warners now operate on a cashless basis.

West Sussex **Bognor Regis**



Bognor Regis has been a seaside fishing settlement since Anglo Saxon times. It became a fashionable resort in the reign of George III and has been frequented by royalty on numerous occasions. The resort is and has an excellent promenade walk. There is a pier, the delightful Hotham Park and a pebbly beach with beautiful clean waters.

Royal Norfolk Hotel

Situated on the seafront with extensive lawns and superb Channel views, this exceptional Georgian building dates from the 1830s and has been visited by the Emperor Napoleon III of France and various descendants of Queen Victoria. All 61 bedrooms are en-suite with bath or shower and wc, have tea/coffee making facilities and TV. Facilities at the hotel are lobby bar with television, split level restaurant, relaxing lounge and bar lounge with small dance floor. Free Wi-Fi in public areas. A lift serves most rooms (a few stairs to approximately half the rooms on the first and second floor).



Departure Date	No of Days	Board Basis	Holiday Price	Single Supp.	Sea View
Mon 31st March	5	Half Board	£309	Nil	£28
Sat 16th August	5	Half Board	£409	£52	£48
Sat 11th October	5	Half Board	£325	£36	£28

Price Includes:

- Half Board Accommodation
- Excursions - Worthing & Chichester





Sheltered by the rolling South Downs on one side and Beachy Head on the other, Eastbourne enjoys a sunny location on the south coast. Often described as one of England's more elegant resorts, the town grew as a fashionable tourist resort largely thanks to the Duke of Devonshire in the nineteenth century and has been a popular destination ever since. The promenade stretches for five miles and is lined with mainly Victorian hotels and the colourful, award winning Carpet Gardens. On the whole fairly uncommercialised there is a traditional pier with concerts at the Bandstand whilst shopping is varied, from the modern Arndale Centre to the Little Chelsea Quarter selling antiques, ceramics and jewellery.

Departure Date	No of Days	Hotel	Theme	Holiday Price	Single Supp.	Sea View
Mon 10th Feb	5	Haddon Hall	*Half Price Bar	£249	Nil	N/A
Mon 17th Feb	5	Haddon Hall	*Half Price Bar	£249	Nil	N/A
Mon 17th March	5	Haddon Hall	*Half Price Bar	£289	Nil	N/A
Sat 13th April	5	Haddon Hall	*Half Price Bar	£319	Nil	N/A
Mon 21st April	5	Langham	Easter Week	£389	Nil	On Request
Sat 24th May	8	Haddon Hall	Bank Holiday Week	£519	Nil	N/A
Sat 14th June	6	Haddon Hall	-	£459	Nil	N/A
Sat 12th July	8	Haddon Hall	-	£619	Nil	N/A
Sat 16th Aug	8	Haddon Hall	-	£649	Nil	N/A
Mon 1st Sept	6	Haddon Hall	-	£459	Nil	N/A
Mon 22nd Sept	5	Haddon Hall	-	£359	Nil	N/A
Mon 20th Oct	5	Langham	-	£395	Nil	On Request
Mon 27th Oct	5	Haddon Hall	Turkey & Tinsel	£389	Nil	N/A
Mon 24th Nov	5	Haddon Hall	Turkey & Tinsel	£389	Nil	N/A
Fri 12th Dec	5	Haddon Hall	Turkey & Tinsel	£329	Nil	N/A

Haddon Hall Hotel

Enviably located on a broad tree-lined avenue at the seafront end of Devonshire Place, the Haddon Hall is situated across from the Bandstand and just a short stroll from the Victorian Pier. A firm favourite for many years, the Haddon Hall has a reputation for excellent food, producing traditional English cuisine with modern variations served in the tasteful restaurant. Entertainment can be enjoyed most evenings in the refurbished ballroom, now accessible by the lift and free wi-fi is available in the lounge area. All of the 75 bedrooms are modern and well-furnished and equipped with central heating, TV, tea/coffee making facilities and hairdryers.

Langham Hotel

The Langham is a 4 star family run hotel, ideally located on the seafront. The hotel has 77 comfortable ensuite bedrooms. The restaurant and conservatory directly overlook the sea presenting a beautiful ambience for the enjoyment of good food and the bar has an excellent atmosphere to unwind. The pier and town centre are just a few minutes walk from the hotel.

Price Includes:

- Half Board Accommodation
(Haddon Hall Hotel February, March & April departures include half price bar - selected drinks 8.00pm - 11.00pm in the Ballroom Bar)
- Excursions
5 & 6 days Hastings/Bexhill and Worthing
8 day as 5 days plus Rye

Itinerary may be subject to change on themed breaks.



from only
£289

Located in the English Channel, the Isle of Wight is separated from the mainland by the Solent and offers superb sandy beaches, stunning countryside and exhilarating coastal walks. The island has several resorts which have been holiday destinations since Victorian times.

A firm family favourite, Sandown is the largest resort on the Isle of Wight and remains the island's principal resort offering a wealth of entertainment. Set around a sheltered bay of golden sandy beaches that stretch three miles to neighboring Shanklin, other attractions include the Pier, which is right in front of our hotel, Browns Pleasure Park and the award-winning Big Cat Sanctuary as well as the many shops, cafes and restaurants.

Shanklin is beautifully situated on the cliffs bordering the southeast coast of the island and is sheltered to the west by high lying downs. The town is split, the old village at the top of the cliff and the new village close to the sea being connected by a cliff lift. A town of great character and charm, Shanklin offers many interesting small shops, amusements, restaurants and pubs. Shanklin Old Village is a perennial attraction where most of the picturesque cottages are clustered around the thatched 'Crab Inn'. Within walking distance is Shanklin's famous Chine, a dramatic fissure in the rock where a 45ft waterfall cascades down to the shore.

Departure Date	No of Days	Hotel	Theme	Holiday Price	Single Supp.	Sea View
Mon 10th March	5	Shanklin	Spring Breakaway	£289	Nil	£28
Sun 27th April	7	Shanklin	-	£449	Nil	£42
Sat 7th June	5	Shanklin	-	£419	£52	£48
Sat 12th July	5	Bayshore	-	£409	£52	£48
Sat 16th Aug	5	Shanklin	-	£429	£52	£48
Sun 21st Sept	7	Shanklin	-	£539	£78	£72
Mon 27th Oct	5	Bayshore	-	£289	£36	£28

Price Includes:

- Half Board Accommodation
10th March Spring Breakaway also includes complimentary glass of wine, beer or a soft drink with dinner each evening
- Excursions
Newport & Ryde and an island tour including Alum Bay & the Needles

Bayshore Hotel, Sandown

Situated in a magnificent position on the seafront, opposite the beach and pier and close to the shopping centre. The hotel boasts a large dance floor with entertainment most evenings, cocktail bar and restaurant overlooking the sea, TV lounge, sun lounge and games room. There is free wi-fi in the public areas and a lift serves most rooms although all floors are split level. The 80 bedrooms all have en-suite bath or shower and wc, central heating, tea/coffee making facilities, hairdryer and TV.



Shanklin Hotel, Shanklin

One of the best known hotels on the Isle of Wight, the Shanklin is situated in Shanklin town with superb views from the magnificent 'Starlite' restaurant and many of the bedrooms. Shanklin Old Village is a few minutes' walk away and the beach is easily accessible via the nearby cliff lift. Facilities at the Hotel include a splendid bar, spectacular restaurant with dancefloor, entertainment most evenings and indoor swimming pool. There is free wi-fi in public areas and the lift serves almost all bedrooms. All the 89 bedrooms have central heating and en-suite bath or shower and WC, tea/coffee making facilities, telephone, hairdryer and TV.



Dorset Bournemouth



from only
£339

Bournemouth is not just a seaside resort but a 'city by the sea' with a huge range of shops, entertainments and amenities. Its combination of miles of golden sands, fine parks and gardens make it a superb choice for everyone.

Marsham Court Hotel

A high-quality accommodation in a wonderful location edging the beautiful Dorset coastline and sparkling sea in Bournemouth. The renovated Marsham Court Hotel is a relaxing full-service 4 star hotel, ideally located for your Bournemouth Holiday. A refreshing blend of contemporary and friendly seaside ambience. Experience a haven of hospitality with stunning views across Bournemouth Bay. Sea View and Sea View/Balcony rooms are available for twins/doubles only.

Norfolk Royale Hotel

The elegant Norfolk Royale Hotel is centrally located just a few steps from Bournemouth Square and only a short stroll from award-winning gardens and blue flag beaches. Offering a high standard of accommodation, en-suite bedrooms with tea/coffee making facilities and flat screen TV. Guests can enjoy the hotel's cosy lounge, bar and entertainment space with a dance floor where you can dance the night away. The hotel also has an indoor pool.



Departure Date	No of Days	Hotel	Holiday Price	Single Supp.	Sea View	Sea View /Balcony
Wed 9th April	5	Norfolk Royale	£339	Nil	N/A	N/A
Wed 27th Aug	5	Norfolk Royale	£439	£52	N/A	N/A
Mon 6th Oct	5	Marsham Court	£419	Nil	£40	£50

Price Includes:

- Half Board
9th April - Spring Breakaway also includes complimentary glass of wine, beer or a soft drink with dinner each evening
- Excursions to Weymouth plus Poole & Swanage

Dorset Weymouth



from only
£299

One of the UK's most beautiful seaside resorts and blessed with one of its sunniest and warmest climates, Weymouth offers a huge number of attractions and is ideally placed for exploring the beautiful county of Dorset. This classic seaside resort, with its idyllic harbour nestles perfectly alongside the 'Isle' of Portland. Its fine Georgian seafront is an impressive backdrop to the long arc of fine, golden sand whilst the beach and Esplanade, historic harbour, marina and nature reserve encircle the town centre, creating a resort that is both modern and traditional. Standing on Weymouth's Esplanade, the Weymouth Pavilion offers a wide range of exciting shows and events to suit all ages.

Berkeley Hotel

An original Georgian listed building, the Berkeley Hotel is centrally located on the seafront offering stunning views of Weymouth Bay, across to Portland Harbour and the rugged Dorset cliffs. The hotel offers 51 en-suite bedrooms, all of which are equipped with hospitality tray, TV and hairdryer. A lift serves all floors (a few rooms on the first floor are accessed by a flight of stairs). Situated on the lower ground floor and with lift access, the fresh and bright dining room offers freshly cooked meals at breakfast and dinner with a varied menu that changes daily. There is a large bar with a dance floor and the hotel also offers regular live entertainment.

Royal Hotel

Situated in the heart of Weymouth. The Royal Hotel is an impressive Grade II listed building of intricate architecture with fantastic views over the beach and bay. Its location couldn't be better for exploring Weymouth. Free Wi-Fi throughout and the lift serves all floors.

Departure Date	No of Days	Hotel	Holiday Price	Single Supp.	Sea View (Per Person)
Mon 10th March	5	Royal	£299	NIL	£28
Mon 5th May	5	Berkeley	£329	£12	£20
Wed 11th June	5	Royal	£429	£52	£48
Mon 23rd June	5	Berkeley	£369	£12	£20
Sat 5th July	5	Royal	£449	£52	£48
Sat 12th July	8	Berkeley	£579	£21	£35
Sat 2nd August	8	Berkeley	£579	£21	£35
Mon 15th Sept	5	Berkeley	£369	£12	£20
Mon 13th October	5	Berkeley	£299	£12	£20
Sunday 19th October	7	Royal	£489	£54	£42
Mon 10th November	5	Royal	£329	£36	£28

Price Includes:

- Half Board Accommodation
10th March - Spring Breakaway also includes complimentary glass of wine, beer or a soft drink with dinner each evening
- Excursions to:
5 days - Bournemouth plus Poole & Swanage
7/8 days - Swanage & Poole plus Dorchester & Portland Bill

Devon Exmouth



With golden sands, colourful gardens and a bustling harbour, Exmouth has been a popular tourist destination since Georgian times. A range of activities are available along its two miles of promenade including amusements, boating and crazy golf plus dancing and entertainment in the Exmouth Pavilion. The town itself offers excellent shopping facilities including an indoor market and a wide variety of Georgian pubs and quality restaurants serving exceptional local produce. Other attractions include the Country Life Centre, a model railway and boat rides along the estuary.

Cavendish Hotel

Ideally situated on Exmouth's level seafront, close to the golden sandy beach and just a few minutes walk from the shops, the Cavendish Hotel offers pleasant lounges, games room, bar lounge with dance floor and entertainment most evening and a lift to most rooms. All of the 76 bedrooms have central heating and en-suite bathroom plus hairdryer, TV and tea/coffee making facilities



Departure Date	No of Days	Theme	Board Basis	Holiday Price	Single Supp.	Sea View
Sun 5th Oct	7	-	Half Board	£439	£54	£42
Mon 17th Nov	5	Turkey & Tinsel	Half Board plus one lunch	£299	£36	£28

Price Includes:

- Accommodation as specified
- Excursions to Exeter, Sidmouth (5 days) plus Teignmouth and Dawlish (7 days)

Devon Babbacombe



Ideally located to enjoy the delights of the English Riviera, the beautiful Babbacombe Promenade offers stunning views across Lyme Bay & Portland Bill. The St Mary church shopping precinct is home to a quaint and varied selection of shops, bars and cafes whilst other visitor attractions include Babbacombe Cliff Railway, the famous Model Village and Babbacombe Theatre, not to mention the beautiful beaches and stunning coastal walks offering miles of breathtaking scenery and wildlife.

The Babbacombe Hotel

Located on the Babbacombe Downs overlooking the sea, seconds walk from the Cliff Railway which takes you down to the blue flag Oddicombe Beach and just a short walk to local shops and attractions. Many of the 82 ensuite bedrooms have sea views and the lift serves most rooms. There is a spacious bar and lounge area which all benefit from large window allowing you to enjoy the amazing ocean views. There is free Wi-Fi throughout the Hotel and nightly entertainment every evening except Wednesday.



Departure Date	No of Days	Holiday Price	Single Supp.	Sea View Supp. (Excluding Single Rooms)	Sea View & Balcony Supp. (Excluding Single Rooms)
Mon 10th Feb	5	£239	£20	£20	£40
Mon 17th March	5	£249	£20	£20	£40
Mon 23rd June	5	£369	£20	£30	£50
Mon 22nd Sept	5	£369	£20	£30	£50

Price Includes:

- Half Board Accommodation
- Excursions to Sidmouth, Dawlish & Brixham/Paignton



from only
£299

A popular family resort on the beautiful South Devon coastline, Paignton is part of the stunning English Riviera. Like all of Torbay, Paignton was frequented by the Victorians and some of the architecture still remains. A relatively large resort, the extensive level seafront bustles with a wealth of traditional seaside entertainments, Goodrington Promenade with its beautiful illuminated gardens, the sheltered harbour and the gently sloping, sandy beaches. There is an abundance of pavement cafes, pubs and restaurants, quality shopping and a host of visitor attractions to suit every taste including the Dart Valley Steam Railway, Palace Avenue Theatre and the famous Paignton Zoo, home to thousands of animals.

Departure Date	No of Days	Hotel	Theme	Holiday Price	Single Supp.
Mon 10th Feb	5	Marine	*Free Bar	£299	Nil
Sun 13th April	5	Palace	-	£349	Nil
Sun 4th May	6	Palace	-	£479	Nil
Mon 26th May	5	Queens	-	£359	Nil
Fri 13th June	8	Marine	-	£529	Nil
Sun 17th Aug	6	Palace	-	£539	Nil
Mon 25th Aug	5	Marine	-	£409	Nil
Mon 25th Aug	5	Queens	-	£399	Nil
Mon 6th Oct	5	Queens	-	£349	Nil
Mon 27th Oct	5	Marine	Turkey & Tinsel	£339	Nil
Mon 3rd Nov	5	Palace	Turkey & Tinsel	£389	Nil

Price Includes:

- Half Board Accommodation
10th Feb Marine Hotel *Free Bar to include a selection of drinks between 6.00pm - Midnight.
- Excursions
5 days - Exeter and Teignmouth
8 days - as 5 days plus Plymouth

Itinerary may be subject to change on themed breaks.

The Palace Hotel

Set in beautiful grounds, the Palace Hotel has the perfect location, right on the Esplanade, directly opposite Paignton seafront and a short flat walk to the town centre. Some of the facilities at the hotel include a spacious elegant restaurant, relaxing gardens and terrace overlooking gardens and seafront, health suite with large indoor heated swimming pool, Washington Bar with television and pool table plus entertainment each evening and a lift to the bedrooms. The Palaces 55 bedrooms are all en-suite and are equipped with television, hairdryer, trouser press and tea/coffee making facilities.



The Queens Hotel

Just 200 yards level walk from the town centre and seafront the Queens Hotel is the ideal location for your stay in Paignton. One of the excellent Duchy group of hotels, the Queens is tastefully decorated throughout and offers nightly entertainment, lounge with dance floor, fine restaurant and heated indoor swimming pool. There is a lift to all floors and all bedrooms are equipped with en-suite facilities, beverage tray and television.



Marine Hotel

Situated on a level position, directly opposite Paignton Seafront and a short walk to the town centre. The hotel has a bar with regular entertainment, restaurant serving a traditional menu and a large conservatory to relax in. The Marine Hotel has 53 en-suite bedrooms, all equipped with tea/coffee making facilities, TV and hair dryer. There is a lift to all floors





from
£379

Situated in a beautiful spot in South Devon, Torquay is often referred to as the 'English Riviera' due to its mild climate and the tropical feel to the resort. Nestling between the picturesque hills is the extremely pretty harbour, and it is here where many of the hotels are located. One of the south's premier resorts, there is always something to occupy in Torquay, with an excellent array of shops, parks and theatres, not to mention the beautiful, bustling harbour.

The Headland Hotel

Situated in one of the most beautiful parts of Torquay on the English Riviera. Sitting majestically on the headland looking out to sea, it is set in two acres of magnificent grounds and offers stunning views across Torbay with numerous coastal walks nearby. Most bedrooms are accessible via the lift and are tastefully decorated with direct dial telephone, television and beverage facilities. The hotel also offers free wi-fi, indoor swimming pool, sauna/multi gym, two spacious lounge bars, spacious restaurant, large dance floor, lift to most floors and quality entertainment most evenings.



Departure Date	No of Days	Hotel	Theme	Holiday Price	Single Supp.	Sea View
Mon 17th March	5	Belgrave Sands	Cosy Break	£379	Nil	N/A
Mon 21st April	5	Belgrave Sands	-	£399	Nil	N/A
Mon 5th May	5	Headland	-	£379	Nil	On request
Mon 12th May	5	Livermead House	-	£385	Nil	On request
Mon 28th July	5	Headland	-	£439	Nil	On request
Mon 24th Nov	5	Belgrave Sands	Turkey & Tinsel	£429	Nil	N/A

Price Includes:

- Half Board Accommodation
17th March - Belgrave Sands Cosy break includes tea/coffee and biscuits on arrival, bingo or quiz one afternoon with tea/coffee and biscuits plus live cabaret most evenings.
- Excursions to Sidmouth, Dawlish & Brixham

Itinerary may be subject to change on themed breaks



Belgrave Sands Hotel & Spa

Newly opened for the 2017 season, the Belgrave Sands is ideally located just 150 yards from the beach and a short, level walk to the town, harbour and theatre. Each of the elegant bedrooms is equipped with an en-suite bathroom with walk-in shower, large flat screen TV, digital safe, mini fridge, hairdryer plus complimentary tea and coffee making facilities. In the restaurant all dishes are prepared entirely in house with the finest of seasonal produce to make your dining experience one to remember. There is lift access to most rooms, free wi-fi as well as use of the spa and leisure facilities (extra charges may apply).



Livermead House Hotel

Epitomising the classic charm of the English riviera, from comfortable dining and social areas, through to Leisure facilities. Serving excellent locally sourced cuisine in an unrivalled setting. With stylish comfortable en-suite bedrooms, a lift serves most bedrooms. The Livermead House Hotel is just a short walk from the town centre.





only
£499

Sidmouth is a picturesque town. Enjoy a relaxing break in the unspoilt seaside resort of Sidmouth, visit the shops in the town. Or take a stroll along the Esplanade. If you are feeling energetic, take a walk to the top of Salcombe or Peak Hills to get a fantastic view of the bay and the town. Or you could just hire a deckchair and watch the world go by.

The Royal York & Faulkner Hotel

The Royal York and Faulkner Hotel is a magnificent Regency Hotel with an unrivalled position on Sidmouth's elegant Esplanade. The hotel has been run by the Hook family for three generations. It is renowned for its traditional hospitality, friendly service and attention to detail. Guests have the choice of three comfortable and beautifully furnished ground floor lounges. The silver service restaurant offers a varied menu of classic and modern cuisine.



Departure Date	No of Days	Holiday Price	Single Supplement
Mon 14th July	5	£499	Nil

Price Includes:

- Half Board Accommodation
- Excursions to Honiton & Exmouth & Torquay



only
£499

Looe is a small coastal town in the South East of Cornwall, divided into two parts by the River Looe. East Looe is the main tourism centre - a collection of narrow streets lined with shops, cafes and pubs that lead through to the main town beach. Looe has managed to retain its small fishing fleet which return at high tide to off load their catch along the quayside at the busy fish market. Linked by a Victorian bridge, West Looe has its own individuality and character. A long harbour arm, the 'Banjo Pier' protects the east side of the mouth of the river whilst the west side is naturally protected by the rocky riverbank and coast line. Looe has a good selection of shops including some excellent arts and crafts and souvenir shops plus an excellent choice of Cornish Pasty shops, pubs and restaurants.

Portbyhan Hotel

In an unrivalled position right in the heart of Looe, the Portbyhan Hotel is just a short stroll from the town centre affording stunning panoramic views of the vibrant harbour. The hotel has in recent years undergone an extensive refurbishment leading to winning 'Best Individual Hotel' at the prestigious National Coach Tourism Awards. Situated on the roof of the hotel is the spectacular Portside brasserie and Terrace which is the perfect location to unwind and relax whilst the bar has a warm and welcoming feel, furnished with modern seating and serving a wide selection of wines, spirits and local guest ales. The restaurant offers an expertly chosen menu boasting hearty Cornish food and fresh local produce. The comfortable bedrooms are all equipped with en-suite bathroom, tea/coffee making facilities, LCD TV with freeview channels and hairdryer. There is entertainment most evenings, complimentary wi-fi access in public areas and a lift to all floors.



Departure Date	No of Days	Holiday Price	Single Supp.	River View	River View with Balcony
Tues 30th September	5	£499	On Request	£40	£88

Price Includes:

- Half Board Accommodation
- Excursions to Plymouth and Mevagissey

Cornwall St Agnes



only
£349

St Agnes lies in a stunning, unspoilt spot on the north Cornish Coast, a designated Area of Outstanding Natural Beauty and a World Heritage Site, located between Newquay and St Ives. St Agnes Beacon overlooks the Atlantic Ocean and is considered 'the most prominent feature' of the Heritage coastline. During the Napoleonic War, it was used as look out for French Ships, more recently it has been used a filming location for the TV series Poldark.

Rosemundy House Hotel

Relax and recharge at the Rosemundy House Hotel, the hotel has cosy lounges, well stocked bar and restaurant. A family run hotel, once an elegant Georgian residence dating back to the 18th century, extended it now has forty-six tastefully appointed bedrooms. All bedrooms are en-suite, with flat screen colour TV, tea/coffee making facilities and hairdryers. The Rosemundy House Hotel is set in its own grounds with private gardens and woodland and is within easy walking distance of St Agnes.



Departure Date	No of Days	Theme	Holiday Price	Single Supp.
Tues 25th February	5	Cornish Winter Warmer	£349	Nil

Price Includes:

- Half Board Accommodation
- Excursions to Truro, St Ives, Falmouth & Newquay

Cornish Winter Warmer includes sherry reception, one afternoon cream tea and a glass of wine with last evening meal.

Cornwall Newquay



only
£249

Voted one of the country's favourite seaside towns, Newquay is Cornwall's premier holiday resort boasting no fewer than eleven beaches and arguable one of the finest coastlines in Europe. Britain's surfing capital, Fistral Beach is a surfers paradise hosting many competitions each year both national and international, whilst Tolcarne and Great Western are the most popular offering golden sand and safe bathing as well as stunning cliff walks. Dating back to the fifteenth century, there are hidden coves and smugglers pubs, a reminder of the colourful history of the area. Today, modern shops sit alongside quaint alleyways with an abundance of craft and antique shops and traditional tea rooms. Newquay's picturesque harbour is a hidden gem, where local fishermen still bring in their catch each day. Other attractions include golf, tennis, putting and bowls or make a visit to beautiful Trenance Gardens a variety of wildlife or Newquay Zoo and the Waterland Leisure Centre.

Eliot Hotel

In a central location, just 50 metres from the seafront and close to Great Western and Tolcarne Beaches, the three star Eliot Hotel is within easy walking distance of the shops and picturesque harbour. Facilities at the hotel include a bar lounge with dance floor, three relaxing lounges, games room with table tennis and pool, free wi-fi in public areas and ballroom with entertainment most evenings. The hotel boasts 76 bedrooms, all of which are fully equipped with en-suite bathroom, tea/coffee making facilities, hairdryer and freeview TV with radio channels. There is central heating throughout and a lift serves most rooms although all floors (including ground floor) are split level with some intermediate stairs.



Departure Date	No of Days	Theme	Hotel	Holiday Price	Single Supp.
Mon 24th Feb	5	Spring Breakaway/ Half Price Bar	Eliot	£249	Nil

Price Includes:

- Half Board Accommodation
Spring Breakaway also includes complimentary glass of wine, beer or a soft drink with dinner and an half price bar on selected drinks each evening.
- Excursions to Truro, Falmouth and Padstow



from only
£289

Nestling around a beautiful old harbour, set against the breathtaking scenery of North Devon. For the energetic there are splendid walks along the Coastal Path, the famous Torrs walks or swimming from the Tunnel beaches and coves. For those who like to take it a bit easier, one can simply stroll through the delightful gardens or while away an hour or two watching the ever changing harbour scene.

Imperial Hotel

In one of the best positions in Ilfracombe, over Wildersmouth beach and the Landmark Theatre, the hotel is just a short stroll away from the high street and harbour. The hotel features a large restaurant, bar and entertainment room with dance floor, where you will find entertainment most evenings. You can relax in the hotel's lounge. You'll also find fantastic sea views from many of the hotel's bedrooms. En-suite bedrooms come with comfy beds for a great nights sleep, tea/coffee making facilities, flat screen TV with Freeview and radio and hairdryer. Free Wi-Fi is available throughout the hotel and lift serving all floors.



Departure Date	No of Days	Holiday Price	Single Supp.	Sea View
Wed 30th April	5	£289	Nil	£28
Sun 3rd August	7	£519	Nil	£72
Sat 6th September	5	£329	Nil	£48

Price Includes:

- Half Board Accommodation
- Excursions to Barnstaple, Bideford & Lynmouth



from only
£299

With all the facilities of a traditional seaside town, Weston Super Mare is ideally positioned on the coast of the West Country. With views across the Bristol Channel to South Wales, it is the perfect base to explore the stunning scenery of the Mendips including the famous Cheddar Gorge. The nineteenth century saw Weston develop from a tiny village of around one hundred inhabitants to a thriving Victorian seaside resort. Today visitors can enjoy a wealth of attractions including shopping centres, the famous Winter Gardens plus big name artists performing at the Pavilion Theatre, Sealife Centre and the magnificent Grand Pier which was completely rebuilt in 2010. Weston's narrow streets are home to a variety of antique and craft shops. Relax on the clean sandy beach that stretches for over a mile, or enjoy the stunning floral beauty of Grove Park and Prince Consort Gardens.

New Ocean Hotel

With a warm welcome and excellent service, the New Ocean is a family run hotel situated opposite Weston's famous Marine Lake and affording panoramic views over Weston Bay and beyond. Just a few minutes stroll to the town centre and gardens, it boasts an unrivalled position in the promenade. The Ocean restaurant offers a varied menu and prides itself on freshly prepared dishes that combine the best of both traditional and modern cuisine. There is a large dancefloor with regular entertainment in the comfortable bar/lounge with a fully stocked and licensed bar open throughout the day and late into the evening. All bedrooms are equipped with full modern en-suite facilities, flat screen digital TV, hairdryer and hospitality tray. Many bedrooms have level access from the lift.

Departure Date	No of Days	Theme	Board Basis	Holiday Price	Single Supp.
Mon 3rd Feb	5	Free Bar*	Half	£299	Nil
Mon 31st March	5	Free Bar*	Half	£349	Nil
Mon 19th May	5	Free Bar*	Half	£379	Nil
Mon 16th June	5	Free Bar*	Half	£395	Nil
Mon 21st July	5	Free Bar*	Half	£395	Nil
Mon 3rd Nov	5	Turkey & Tinsel/ Free Bar*	Half	£359	Nil

Price Includes:

- Half Board Accommodation
- Excursions to Bath, Wells and Clarkes Village, Street

*Includes Free Bar 6pm -10 pm each evening (House brands only/ selected drinks)

Wales Porthcawl



Located between Swansea and Cardiff, Porthcawl was originally a port for the iron and steel industries and still has some interesting features from that period, including the oldest maritime warehouse in Wales, an attractive harbour and the last coal and gas powered lighthouse in the country. It developed as a seaside resort after the Great War and the splendid Grand Pavilion dates from 1932. Nearby is Kenfig Nature Reserve, a site of national importance. This attractive seaside resort offers numerous facilities, including the world famous Porthcawl golf course, the finest course in Wales, an expansive sandy beach and Coney Beach, a fairground with a variety of rides and amusements which was named after the famous New York venue. To the East of the town lies the River Ogmore and the beautiful Glamorgan Heritage Coast.

Seabank Hotel

Porthcawl's most iconic building, situated on the headland with fantastic sea views across the resort and bay and a short walk from the Grand Pavilion and John Street shops. There are spectacular panoramic views of the Bristol Channel and coast from the bar and many bedrooms. Our en-suite bedrooms come with comfy beds for a great nights sleep, tea and coffee making facilities, flat screen TV with Freeview/radio and hairdryer. The hotel features a large modern restaurant, quiet lounge and bar, with dance floor, where you will find entertainment most evenings. Free Wi-Fi is available throughout the hotel and there is a lift that serves all floors.



Our en-suite bedrooms come with comfy beds for a great nights sleep, tea and coffee making facilities, flat screen TV with Freeview/radio and hairdryer. The hotel features a large modern restaurant, quiet lounge and bar, with dance floor, where you will find entertainment most evenings. Free Wi-Fi is available throughout the hotel and there is a lift that serves all floors.

Departure Date	No of Days	Holiday Price	Single Supp.	Sea View
Sun 27th July	7	£549	£78	£72

Price Includes:

- Half Board Accommodation
- Excursions to include Cardiff, St Fagans Outdoor Museum, Swansea & Mumbles

Wales Criccieth



Criccieth lies on the South side of the Llyn Peninsula with splendid views over Cardigan Bay. It is home to a medieval castle built by the Welsh in the mid-thirteenth century. The castle headland divides the town into two with a pebbly beach to the West and a lovely sheltered mainly sandy beach to the East. The countryside around Criccieth is breathtaking with fabulous coastal views over Cardigan Bay.

George IV Hotel

Situated on the High Street in the centre of Criccieth with magnificent views towards the sea and castle. This iconic hotel is in an ideal location, it is a popular choice with its extensive public areas including a delightful intimate bar, attractive large restaurant, entertainment room with additional bar and a cosy lounge. The hotel has 79 bedrooms with a lift serving all principal floors. All bedrooms are en-suite have tv, tea/coffee making facilities and hairdryer.



Departure Date	No of Days	Theme	Board	Holiday Price	Single Supp.	Castle View
Mon 24th March	5	Spring Breakaway	HB	£269	Nil	£28
Mon 17th May	5	Port Merrion	HB	£359	Nil	£48
Sat 28th June	5	Port Merrion	HB	£409	Nil	£48
Sat 20th Sept	5	Port Merrion	HB	£359	Nil	£48
Mon 3rd Nov	5	Turkey & Tinsel	HB Plus one lunch	£299	Nil	£28
Fri 5th Dec	4	Festive Sparkle/Cheshire Oaks Designer Outlet	HB	£219	Nil	£21

Price Includes:

- Accommodation as specified
24th March - Spring Breakaway also includes a pre dinner drink each evening
- Excursions to Bala and Barmouth (4 days) plus Porthmadog (5 days). Admission to Port Merrion Village also included on tours departing May, June & September

Itinerary may be subject to change on themed breaks.



from
£299

Probably the most iconic, quaint and charming seaside town in Wales, Tenby was awarded a bronze award for the best UK coastal resort at the British Travel Awards in 2013. The original town of Tenby was called 'Dinbych y Pysgod' in Welsh or 'little town of fishes' and was established by the Normans as a fortified town. Most of the old town walls still remain today and, with the narrow cobbled streets and medieval houses serve only to add to Tenby's charm. The town became a popular seaside resort during Georgian and Victorian times. Today the centre of Tenby is a maze of narrow little streets brimming with quirky shops, bars and restaurants. Attractions include the three great beaches, each with its own character and all facing a different direction, Tenby Museum and Art Gallery on Castle Hill, the oldest independent museum in Wales and the National Trust owned Tudor Merchants House. There are also two golf courses plus numerous water sports including mackerel fishing trips.



Clarence House Hotel

Established in 1938, the Grade II listed Clarence House Hotel has been under the personal supervision of the Phillips family for over seventy years. The hotel is superbly situated in the centre of the Esplanade enjoying panoramic views of the South Shore, St. Catherine's Island, Castle Beach, Caldey Island, South Beach and Giltar Point. Facilities at the Clarence House include a quiet lounge, Seagull Bar, the tranquil Rose Garden and Caldey View Terrace, the ideal spot to watch the world sail by. The comfortable dining room offers a choice of home cooked cuisine and there is entertainment most evenings. There is a lift to all floors and all 76 bedrooms are en-suite with colour TV and tea/coffee making facilities. Many bedrooms have either sea front views or look out over the walled garden to the rear of the hotel. The hotel also offers 'Happy Hours' daily from 5.30 - 6.30pm and 8 - 9pm (Residents-only Bar from 7pm).

Cliffe Norton Hotel

Occupying a prime position on the North Beach, in the stunning resort of Tenby, with its beautiful bay and sparkling crystal clear waters. The hotel boasts spectacular views across the bay from many of the hotel's bedrooms and restaurant and is just a short stroll away from the resort's town centre. The hotel features a restaurant, quiet lounge and bar with dance floor, where you will find entertainment most evenings. En-suite bedrooms come with comfy beds for a great nights sleep, tea and coffee making facilities and a flat screen TV, free Wi-Fi throughout and a lift serving all floors.



Departure Date	No of Days	Hotel	Itinery	Holiday Price	Single Supp.
Mon 24th March	5	Cliffe Norton	1	£299	Nil
Mon 12th May	5	Clarence House	2	£429	Nil
Sun 6th July	6	Clarence House	2	£539	Nil
Sun 10th August	6	Clarence House	2	£539	Nil
Mon 8th September	5	Clarence House	2	£459	Nil
Mon 13th October	5	Clarence House	1	£375	Nil

Price Includes:

- Half Board (24 Mar - Cliffe Norton Hotel Spring Breakaway includes complimentary glass of wine, beer or a soft drink each evening)
- Excursions
Itinerary 1 St Davids and Saundersfoot & Carmarthen
Itinerary 2 Canarth Falls & Cardigan, Saundersfoot & Carmarthen



from only
£189

Uniquely situated on a rugged coastline between the Great and Little Ormes and overlooking the Irish Sea, Llandudno lies at the foot of Snowdonia National Park and is the largest resort in Wales. Boasting two beaches, the award winning shingle North Shore and the quiet sand-duned West Shore, Llandudno has become known as the 'Queen of the Welsh Resorts' having retained its Victorian elegance with an immaculate seafront and carefully preserved architecture. The Grade II listed pier offers an array of attractions including shops, cafes and amusements. Enjoy a ride on the Llandudno cable car rising 679 feet up to the summit of the Great Orme and take in the spectacular panoramic view of the bay and out towards the Conwy Estuary. One of Wales' premier shopping destinations, you'll find a mix of modern malls and delightful specialty shops in and around its canopied streets as well as award winning restaurants and tea rooms.



Kensington Hotel

A seafront hotel prominently positioned on the central promenade with spectacular views of the Great Orme and Llandudno Bay. Owned by the Beardmore family for over 30 years, visitors return year after year, appreciative of the top-class hospitality, friendliness, 1st class food and excellent service. All bedrooms have en-suite facilities, flat screen TV, tea & coffee making facilities and free Wi-fi. A lift serves most rooms and there is regular evening entertainment.

Departure Date	No of Days	Theme	Itinerary	Holiday Price	Single Supp.
Fri 21st February	4	Celebration Weekend/Reunion tour	TBA	£189	Nil
Mon 3rd March	5	-	2	£319	Nil
Mon 21st April	5	Easter week	1	£349	Nil
Sun 1st June	6	-	1	£469	Nil
Sun 27th July	5	-	2	£389	Nil
Mon 1st Sept	5	-	2	£379	Nil
Mon 27th Oct	5	-	1	£379	Nil
Mon 8th Dec	5	Turkey & Tinsel	TBA	£375	Nil

Price Includes:

- Half Board accommodation
- Excursions : Itinerary 1 - Snowdonia and Anglesey (5 days) plus Caernarfon (6 days)
Itinerary 2 - Caernarfon and Snowdonia

Scottish Borders & Edinburgh



The picturesque town of Melrose is located next to the River Tweed at the foot of the triple peaks of the Eildon Hills, a distinctive landmark of the Scottish Borders. The area around Melrose is thought to have been inhabited for thousands of years with the Romans arriving AD79 or 80 and building a fort nearby named Trimontium: 'Place of the Three Hills.' Melrose Abbey lies to the Northeast side of the centre of the town. With shops and cafes, there is ample things to do whilst visiting this pretty little town.

Waverley Castle Hotel

Located near Melrose, just a mile from the centre. Set in five acres of parkland in the Scottish Borders, the hotel offers the perfect base to explore its incredible surroundings. A 4-minute walk from the River Tweed, the hotel provides stylish guest spaces with a choice of relaxing lounge and bar areas, chic dining room and beautifully refurbished ballroom. The Waverley Castle Hotel has 77 en-suite bedrooms have flat screen TV and tea/coffee making facilities. The hotel has free Wi-Fi in public areas and a lift serving all floor.



Departure Date	No of Days	Board Basis	Theme	Holiday Price	Single Supp.
Sat 7th June	5	Half Board	-	£369	£52
Mon 24th Nov	5	Half Board plus one lunch	Turkey & Tinsel with one lunch plus Edinburgh Xmas Markets	£299	£36

Price Includes:

- Half Board Accommodation
- Excursions to Edinburgh, Kelso and Jedburgh

Scotland Troon



Ayrshire is situated on the west coast of Scotland and is characterized by striking contrasts, offering rolling green hills, a varied coastline and picturesque beaches. A beautiful seaside town located to the north of Ayr with stunning views across to the Isle of Arran and Ailsa Craig, Troon is a charming destination and a popular holiday resort with a variety of facilities on the Esplanade. Curved into a bay, Troon beach is a long sweeping stretch of sand whilst the bustling harbour is home to Ayrshire's fish market and the Yacht Haven, one of the Clyde's leading sailing centres. Troon could well be described as a golfer's paradise, boasting an amazing seven golf courses including Royal Troon which regularly hosts the famous Open Championship

South Beach Hotel

Ideally located directly facing the sea and famed for its friendly atmosphere, the superb family owned South Beach Hotel has 34 bedrooms, all of which are en-suite fully equipped with TV, radio and tea making facilities, some having stunning sea views. Adjacent to the conservatory, the main restaurant offers the very best of both Scottish and continental cuisine using the finest local produce. In addition to the popular Millers Bar, the South Beach has an attractive lounge bar offering an outstanding lunch and supper menu whilst the superb residents lounge offers quiet relaxation. Please note there is no lift at this hotel.



Departure Date	No of Days	Holiday Price	Single Supp.
Mon 1st September	5	£419	£80

Price Includes:

- Half Board Accommodation
- Excursions to Ayr, Loch Lomond and Largs

Scotland **Dunoon**



from only
£239

Dunoon is splendidly situated on the western shores of the Firth of Clyde, where Loch Long and Holy Loch join the sea. It boasts some lovely gardens, two bays and a flat promenade. Within just a few miles is some of Scotland's most spectacular mountain scenery in the Argyll Forest Park. The journeys along Loch Eck and to Colintrave are amongst the most memorable.

Selborne Hotel

Superbly situated looking across the Clyde with pleasant lawns reaching down to the promenade and water's edge. All the public rooms and many of the bedrooms offer uninterrupted views of the river, which is a constant source of interest. Ground floor areas include a lounge, bar lounge with dance floor, quiet lounge and games room.



Departure Date	Theme	No of Days	Holiday Price	Single Supp.	Estuary View
Mon 24th March	Spring Breakaway/ Bar Deal	5	£239	NIL	£28
Mon 12th April	Spring Breakaway/ Bar Deal	5	£269	Nil	£28
Wed 17th Sept	-	5	£319	Nil	£48
Mon 10th Nov	Turkey & Tinsel	5	£289	Nil	£28

Price Includes:

- Half Board Accommodation
- Excursions to Inveraray and Loch Lomond

(Spring Breakaway) 24th March/12th April also includes complimentary glass of wine, beer or a soft drink with dinner each evening plus Bar Deal nightly 7pm – 11pm – available on selected drinks (House Brands only)

Scotland **Fort William**



from only
£289

Fort William, the 'Outdoor Capital of the UK', is not only an important tourist centre but also a splendid location from which to explore the magnificent Western Highlands. It is situated at the southern end of the Great Glen, on the shore of Loch Linnhe, beneath towering Ben Nevis, Britain's highest mountain.

Croit Anna Hotel

Situated on the shores of Loches Linnhe, three miles from the centre of Fort William, with spectacular views across the loch from all the public rooms and many bedrooms, the Croit Anna offers a comfortable base to relax with WiFi throughout. Please note there is no lift at this hotel.



Departure Date	Theme	No of Days	Holiday Price	Single Supp.	View
Mon 5th April	Bar Deal	5	£289	NIL	£28
Sun 5th Oct	-	7	£399	£54	£42

Price Includes:

- Half Board Accommodation
- Excursions to Oban and Loch Ness/Fort Augustus (5 days) & Plus Isle of Skye (7 days)

(Spring Breakaway) 5th April also includes complimentary glass of wine, beer or a soft drink with dinner each evening plus Bar Deal nightly 7pm – 11pm – available on selected drinks (House Brands only)

Scotland **Aberfoyle**



The Rob Roy Hotel is wonderfully situated in the Trossachs National Park. A short stroll along the bank of the Forth River to the picturesque village of Aberfoyle, where you'll find Scottish made Arts, Crafts and Clothing. The Rob Royal offers a warm welcome with good food and friendly staff. Rooms are equipped with ensuite bathrooms flat screen televisions, tea & coffee making facilities and wi-fi. Please note there is no portorage at this hotel.



Departure Date	No of Days	Holiday Price	Single Supp.
Mon 24th February	5	£249	Nil

- Price Includes:
- Half Board Accommodation
 - Excursions to Loch Katrine & Callander & Edinburgh

Scotland **Bannockburn**



Bannockburn is famous for the Battle of Bannockburn, one of Scotland's major historical sites. Located on the outskirts of Stirling, which is steeped in history with its magnificent castle. It is an ideal base for exploring this timeless country. With Majestic Edinburgh, Stirling and the stunning Trossach Mountain Range to explore. We also visit the spectacular Falkirk Wheel, a boat like that links tow Scottish canal systems.



The King Robert Hotel

The King Robert Hotel is situated on the site of the Battle of Bannockburn on the outskirts of Historic Stirling. It is a family run hotel where you will find a friendly welcome and excellent value for money. Please note there is no lift at this hotel and no portorage.

Departure Date	No of Days	Holiday Price	Single Supp.
Mon 9th June	5	£359	£80
Mon 28th July	5	£369	£80
Sun 24th August	5	£379	£80

- Price Includes:
- Half Board Accommodation
 - Excursions to Edinburgh, The Kelpies & The Falkirk Wheel (entrance included to the Falkirk Wheel)

Fair Trading Agreement

Our fair trading agreement and important holiday information sets out clearly and simply the responsibilities which we at KM Motors LTD have to you and you in turn have to us when a contract is made between us. The contract is made when you make a booking and we accept it by written confirmation of the terms set out in this brochure. When signing the booking form for your holiday you will sign on behalf of yourself, and others named in your party, that you have read, understood and have accepted this Fair Trading Agreement and the Important Holiday Information provided in this brochure. Your obligation is to pay the price of the holiday and recognise your liabilities if you wish to alter the holiday or have to make a cancellation. On our part we have the obligation to provide you with the holiday you have booked. Our specification of that holiday and our terms are clearly stated in the brochure. Your contract is entered into with KM MOTORS LTD. This Fair Trading Agreement applies to all holidays sold from this brochure. Your holiday contract is subject to English law and jurisdiction.

Your contract with KM Motors Ltd

1. You Pay a Deposit

British Holidays £40 per person (a non-refundable/non transferable deposit of £80 per person is payable on all Thursford Xmas Spectacular tours).

2. You Pay the Balance

The balance of your holiday cost must be paid via the office at which you made your booking not later than 6 weeks before the holiday departure day (4 weeks before on tours of 4 nights or less duration) If you book within the applicable balance due period you must pay the full holiday cost at the time of booking. If the balance is not paid in time we reserve the right to cancel your holiday, retain your deposit and apply cancellation charges set out in paragraph 4 (if you cancel your holiday)

3. If You Change Your Booking

If you wish to change your booking to another departure date in the 2025 holiday brochure we shall do our utmost to make the changes, provided written notification is received from the person who signed the booking form, not later than the date on which the original holiday cost was due for payment. This must be accompanied by a payment of £10.00 per person to cover administration cost. Any alteration made later than the original balance due date will be treated as a cancellation and will be subject to the cancellation charges set out below.

4. If You Cancel Your Holiday

You may cancel your holiday at any time provided that the cancellation is made by the person signing the booking form, and is communicated in writing to ourselves. As this incurs administration costs we shall retain your deposit and in addition, apply cancellation charges set out below:

Prior to 42 days before departure	Deposit only
29 - 42 days before departure date	30% of holiday cost
15 - 28 days before departure date	45% of holiday cost
8 - 14 days before departure date	60% of holiday cost
0 - 7 days before departure	100% of holiday cost

Note if the reason for cancellation is covered under the terms of an insurance policy, you may be able to reclaim these charges.

5. If You Have a Complaint

If you have a complaint during your holiday, please inform, in the first instance the supplier of the service and then inform our driver/courier, who will do his/her utmost to resolve the problem immediately. If the matter cannot be put right locally, you must complete a report form which is obtained from our driver/courier. Please follow this up within 28 days of your return home by writing to the customer relations officer, KM Motors Ltd, Wilson Grove, Lundwood, Barnsley, South Yorkshire, S71 5JS. It is therefore a condition of this contract that you communicate any problem to the supplier of the services in question and to our driver/courier whilst in resort and obtain a written report if you fail to follow this simple procedure we cannot accept responsibility as we have been deprived of the opportunity to investigate and rectify the problem.

6. Statutory Authorities

This brochure is issued subject to applicable Acts of Parliament and Government Regulations and the company reserves the right to modify itineraries to conform with any request from the competent authorities in the United Kingdom and any other sovereign state through which the tour runs.

7. Conditions of Carriage

When you travel on an aircraft, train or ship the conditions of carriage of that carrier apply and you are subject to National and International conditions which may limit or exclude liability. Your contract made under the terms of this Fair Trading Agreement is subject to English law and jurisdiction. Please note that facilities on board the coach may not be available from time to time through mechanical defect, but be assured that under such circumstances we will do our utmost to ensure that, wherever possible, facilities will be made available again as soon as practical, bearing in mind that we would not wish to interrupt the overall tour itinerary. The Public Service Vehicle (Conduct of Drivers, Conductors of Passengers) Regulations as amended 1990, apply to all coaches throughout any holiday in the UK, in the case of ferries or sea craft being unable to operate owing to inclement weather we will arrange other sea crossings as available.

8. Right of Refusal

We must point out that KM MOTORS LTD reserve the unconditional right to refuse booking or terminate a passenger's holiday in the event of unreasonable conduct which in our opinion is likely to cause distress, damage, danger or annoyance to other customers, employees, property or to any third party. This includes any passenger who fails to advise us of any medical condition or disability in accordance with paragraph 9 (below). If you are prevented from travelling as a result of such termination, our responsibility for your holiday thereupon ceases. Full cancellation charges will apply and we will be under no obligation whatsoever for any refund, compensation or loss you may incur.

9. People with Special Needs

We are keen to plan arrangements for your holiday so that special needs and requests can be accommodated as far as possible. Not all holidays in this brochure may be suitable for you, we want you to enjoy your holiday and will try to help you select an appropriate trip, it is essential that we are contacted prior to you making your booking, in order that special needs can be accommodated as far as possible. Please note requests for special menus/diets may incur an additional charge, which must be paid locally to the hotel concerned. Passengers who require one-to-one assistance must be accompanied by an able bodied person, as our tour managers are unable to offer the assistance of a personal nature which may be required.

10. Other Terms

A. you may not bring a pet or any other animal on a KM Motors Ltd Coach Holiday.

B. you may not play a music or media player on the coach.

C. you are responsible for ensuring that you are at the correct departure point at the correct time, and we cannot be liable for any loss or expense suffered by clients because of their late arrival at any departure point.

D. you must ensure that you have a valid passport or visas (if necessary) and we cannot be liable for any loss or expense suffered if you do not.

E. Although our vehicles have large luggage compartments, we have to adhere to regulations concerning the overall weight of fully laden vehicles. We would, therefore, ask you to restrict your luggage to one medium sized suitcase. It is a condition of travel that any items over and above this are notified to ourselves in writing and this includes collapsible wheelchairs.

Note battery driven chairs & motorised scooters cannot be accepted

It is your responsibility to make sure your luggage is on board the coach on which you are travelling. Please ensure that any instruction given by our driver/courier, at any time during the holiday, concerning luggage or personal effects are strictly adhered to. We strongly recommend you take out holiday insurance which provides cover in the case of loss or damage.

F. Smoking and the use of electronic cigarettes is not allowed on any KM Motors Ltd coaches. If you ignore this rule and thereby cause inconvenience, distress or disappointment to other passengers, you may be asked to leave the holiday. See paragraph 8 - Right of Refusal.

G. In the event of contact being made with KM Motors Ltd by the passenger on any subject where by the contained information in this brochure is changed or additional information given, for any reason, the passenger must ensure that the information given is confirmed to them in writing. No responsibility will be accepted for any loss, damage or disappointment if this procedure has not been followed.

H. Whilst every effort is made to adhere to stated times, there could be circumstances beyond our control such as weather and traffic conditions that may cause delay.

I. This brochure was accurate at the time of going to print, if we become aware of any changes our procedures are as shown in 'our promise to you' paragraph 3, 'if we change your holiday'.

J. Excursions are included in the price of most holidays and refunds cannot be made for passengers not wishing to go on these excursions.

K. Admission fees to buildings, grounds etc and guided tours are not included unless otherwise stated in the brochure.

11. Holiday Insurance

It is a condition of your contract with KM Motors Ltd that you should take out insurance to cover you in the event of illness, personal injury or death during the course of your holiday.

OUR PROMISE TO YOU

1. We Reserve Your Holiday

Your holiday is confirmed at the time of booking subject to space being available on the holiday of your choice.

2. Your Holiday Price

Our prices are fixed on November 1st 2024 and are shown in the price panels on each page on a per person basis.

The price of your holiday is fully guaranteed and will not be subject to any surcharges. Unless specifically indicated in the holiday description, entrance fees, city guides and optional excursions are not included in the holiday price.

3. If We Change Your Holiday

The contents of this brochure are correct at the time of going to press. We reserve the right to make changes to the information contained in this brochure and will advise you of any changes affecting your holiday where those changes occur prior to booking. The arrangements for holidays in this brochure may require changes after a booking is made. Most of these changes are very minor but where they are significant we will notify you as soon as reasonably possible before your departure date. A 'significant change' is one that involves changing your departure date, resort area, town of departure, reducing the quality of the main hotel. Changing the location of any single overnight hotel does not constitute a 'significant change'. In the event of a 'significant change' you may decide to a) continue with the amended holiday b) accept an alternative holiday which we may offer to you or c) cancel your booking. If you choose (a) or (b) we will pay you compensation on the scale below. If you choose (c) we will refund all monies paid by you and compensate you as shown on the scale below. No other claims for compensation or expenses will be considered.

More than 21 days	Nil
14 - 21 days	£10 per person
0 - 13 days	£15 per person

4. If We Cancel Your Holiday

It is necessary for there to be a minimum number of passengers in order to operate a tour. If the minimum number is not achieved before the balance due date the tour could be cancelled. In certain circumstances, therefore, we may have to cancel your holiday, and if this should occur we will return to you all the money you have paid to us, or offer you a suitable alternative. However we will not cancel your holiday after the date on which the holiday balance was due unless;

- you have not paid for your holiday in full
- your holiday is influenced by threat of war, riots, civil strife, terrorist activity, industrial disputes, natural or nuclear disasters, fire, epidemic/pandemic or health risk, technical problems to transport, closure or congestion of ports or similar event beyond our control. If we cancel your holiday at any time we are liable only for any monies you may have paid to us at the time of cancellation and the compensation payments detailed in paragraph 3.

5. What happens to Complaints

All complaints that are received are thoroughly investigated and customers are kept informed at each stage of the investigation. Sometimes the investigations can take time when awaiting a response from hoteliers. We can normally agree an amicable settlement of the few complaints we receive, if the complaint is found to be genuine. You may of course go to your county court or other suitable court.

6. Responsibility for Your Holiday

We accept responsibility for ensuring that all component parts of your holiday as described in this brochure are supplied to you to a reasonable standard and this includes optional excursions purchased through our employees. If any such part is not provided in the advertised manner, we will pay you reasonable compensation unless the non provision was due to circumstances which we could not predict and which were beyond our control such as adverse weather, road or traffic conditions or the matters referred to in paragraph 4 (2) across.

For all claims other than death or personal injury which result from improper performance of the contract by us in circumstances where you stay for the whole or part of the holiday, our liability is limited to the total cost of the holiday (less any insurance) per person.

You should also be aware that:

A. some hotel amenities (e.g. lifts, swimming pools) require servicing or cleansing and we cannot, therefore guarantee that they are always available. Other factors, such as weather or lack of demand can affect the provision of entertainment or outdoor amenities described in this brochure.

B. some excursion itineraries include the use of ferries and other forms of transport which can be affected by inclement weather and may have to be cancelled or arrangements changed. Wherever possible a suitable alternative excursion will be offered.

7. Personal Injury

(Whilst Participating in Arrangements Made by Us)

K M Motors Ltd has taken all reasonable and proper steps to ensure that proper arrangements have been made for all the holidays which are advertised in this brochure, including optional excursions offered by our employees and that the suppliers of all the services are efficient, safe and reputable. Whilst we have no direct control over the provision of these services to you by suppliers we will pay to our clients the equivalent of such damages as they would be entitled to receive under English Law in an English court for any personal injury to the client including illness or death, caused by the failure to perform or the improper performance of such services by our employees or any of our suppliers contracted or sub-contracted by us to provide any part of the arrangements for your holiday as described in this brochure and where such failure or improper performance is due to the fault of such person. We do not accept responsibility if the failure, death or personal injury is not caused by any fault of ours or of our suppliers or is caused by you or someone not connected with your holiday arrangements, or if the failure, death or personal injury is due to unusual or unforeseen circumstances which even with all due care we or our suppliers could not have anticipated or avoided.

Note We accept responsibility as stated above provided that;

A. All claims for personal injury are notified within 3 months of the return from holiday.

B. The injured client(s) assign to KM Motors Ltd any rights against a supplier or other person or party they may have relating to the claim.

C. They agree to co-operate fully with us should we or our insurers wish to enforce those rights which have been assigned to us to which we are subrogated.

D. Such payment is limited in the case of transport by water or air to a maximum of such sums as would be obtained under the provisions of the appropriate International Conventions. The assignment is necessary to enable us to try and recover from suppliers any compensation we have paid to clients by the fault of those suppliers. If we recover more than such compensation and costs, any excess will be paid to the injured client.

8. Personal Injury

(Unconnected with Arrangements Made by Us)

Where appropriate and subject to our reasonable discretion, we will afford general assistance to clients who through misadventure suffer illness, personal injury or death whilst travelling on a KM Motors Ltd holiday arising out of an activity which does not form part of the advertised itinerary nor part of the excursion offered through the company, and which is the responsibility of a third party. If assistance is provided we will limit any monies paid to £5,000 per booking form and in the event of there being a successful claim against a third party, or there being suitable policy(ies) in force our costs shall be recoverable from the clients concerned.

9. Other Terms

A. Our Delay Policy

In the event of a delay of more than 6 hours to the advertised time on any of our holidays, we will do our best to reduce your discomfort. However, all clients are strongly advised to take out Insurance cover with a comprehensive delay protection plan offering financial compensation for delays extending beyond 12 hours.

B. Holiday Excursions

Sightseeing tours in cities and other places of interest are not included in the price unless specifically mentioned on the tour page, although sightseeing excursions will often be available from your driver/courier at additional cost. Optional excursions will operate subject to a minimum number of passengers wishing to partake.

C. Entertainment

Some of our hotels arrange additional entertainment which could include music, dancing, film shows, bingo etc. The nature and frequency of the entertainment presented is at the discretion of the hotel and therefore not guaranteed and could be withdrawn if there is a lack of demand or insufficient numbers in the hotel

D. Special Requests

We accept these on the understanding that they will be passed onto the hotel. Under no circumstances can we guarantee that such requests will be granted or that the hotel had, or is able to, provide the requested facilities.

Important Note

Compensation payments do not apply to changes caused by reason of war, or threat of war, riots, civil strife, terrorist activity, industrial action, natural or nuclear disasters, fire, technical problems to transport, epidemic/pandemic or health risk, adverse weather conditions and similar events beyond our control.

This brochure was printed in November 2024..

Your contract is with KM Motors LTD
Wilson Grove, Lundwood, Barnsley, South Yorkshire, S71 5JS

For Bookings Contact
52 Market Street, Barnsley, South Yorkshire, S70 1SN
Tel: 01226 245564



Our 2025 Holiday Destinations



British
Coach Holidays

52 Market Street, Barnsley, S70 1SN
Telephone 01226 245564 www.kmtravelbarnsley.co.uk