



Of Barnsley, South Yorkshire

Travel



ESTABLISHED 1971

British Coach Holidays



52 Market Street,
Barnsley, S70 1SN

Telephone 01226 245564

Door to Door Holidays*

*Subject to Area Availability

www.kmtravelbarnsley.co.uk



Established in 1971, here at KM Motors Limited we pride ourselves on providing quality coach tour holidays at affordable prices. From weekend breaks in Llandudno and Blackpool, to week long stays in Cornwall and the south coast, we offer a range of tours to suit all pockets.

Those of you who have previously travelled with KM already know about the quality of service we provide. A family owned and operated company, we pride ourselves on the high standards offered by our friendly administrative staff and professional drivers, all of whom have many year's experience in the coach travel industry. In order to maintain these standards we continually upgrade our fleet with the most modern of vehicles.

Once again for 2020 we will be revisiting many favourite destinations such as Eastbourne and Scarborough, along with new hotels in Blackpool and Weymouth. New destinations include Bridlington, Crickieth and Dunoon. Also following their overwhelming popularity in 2019 we will once again be returning to the Thursford Christmas Spectacular and the Lake District- be sure to book early to avoid disappointment!

With almost 50 years experience in arranging and operating coach holidays, you book with KM safe in the knowledge that you will be travelling with a well-established, reliable operator and, for your peace of mind our Fair Trading Agreement complies fully with the EC directive on package travel. Our promise is to offer a quality of service that is second to none.

Booking your holiday couldn't be easier. We accept all major credit and debit cards so you can just give us a call on 01226 245564 and make your reservation by telephone. Or why not call into our travel office where our friendly staff will be pleased to advise and assist.

On behalf of the entire team here at KM we would like to thank you for your continued support and for choosing our 2020 brochure. We look forward to welcoming you on board!

All prices are per person unless otherwise stated.

JANUARY

Date	Destination, Hotel	Days	£	Pg
17th	Blackpool, Queens Hotel	4 days PW	£135	6
20th	Blackpool, Queens Hotel	5 days	£159	6
20th	Scarborough, Cumberland Hotel	5 days	£165	5
27th	St Annes on Sea, Monterey Beach	5 days	£179	8
27th	Eastbourne, Queens Hotel	5 days	£179	14

FEBRUARY

Date	Destination, Hotel	Days	£	Pg
3rd	Llandudno, Evans Hotel	5 days SB	£175	23
3rd	Paignton, Palace Hotel	5 days	£245	17
7th	Blackpool, Queens Hotel	4 days	£129	6
7th	Scarborough, Cumberland	4 days	£119	5
10th	Eastbourne, Hadleigh Hotel	5 days	£159	14
14th	Llandudno, Evans Hotel	4 days SB	£139	23
17th	Torquay, Belgrave Sands	5 days	£269	18
18th	Babbacombe, Hotel De La Mer	5 days CB	£189	20
24th	Mill Rythe Holiday Village	5 days	£179	15
24th	Blackpool, Queens Hotel	5 days	£159	6
28th	Great Yarmouth, New Beach	3 days	£95	10

MARCH

Date	Destination, Hotel	Days	£	Pg
2nd	Eastbourne, Haddon Hall	5 days	£199	14
2nd	Cromer, Hotel De Paris	5 days	£189	10
2nd	Bridlington, Monarch Hotel	5 days	£189	12
9th	Scarborough, Cumberland	5 days	£195	5
9th	Llandudno, Evans Hotel	5 days SB	£199	23
9th	Porthcawl, Seabank Hotel	5 days	£199	21
9th	Blackpool, Park House Hotel	5 days	£229	6
16th	Tenby, Clarence House Hotel	5 days	£239	22
16th	Blackpool, Queens Hotel	5 days	£159	6
16th	St Annes on Sea, Monterey Beach	5 days	£185	8
20th	Blackpool, Queens Hotel	3 days MD/CW	£129	6
20th	Llandudno, Evans Hotel	4 days MD	£159	23
23rd	Looe, Portbyhan Hotel	5 days	£255	16
23rd	Eastbourne, Queens Hotel	5 days	£219	14
23rd	Torquay, Metropole Hotel	5 days	£209	18
25th	Crickieth, George IV Hotel	5 days	£205	22
27th	Scarborough, Cumberland	4 days	£139	5
30th	Bournemouth, Devon Towers	5 days	£229	13
30th	Great Yarmouth, New Beach Hotel	5 days	£189	10
30th	Dunoon, Selbourne Hotel	5 days	£189	24

APRIL

Date	Destination, Hotel	Days	£	Pg
6th	Blackpool, Queens Hotel	5 days	£169	6
6th	Paignton, Cambria Hotel	5 days	£229	17
6th	Torquay, Belgrave Sands Hotel	5 days	£319	18
6th	Morecambe, Auckland Hotel	5 days	£229	7
9th	Llandudno, Evans Hotel	5 days E	£235	23
10th	Babbacombe, Hotel De La Mer	5 days E	£259	20
13th	Bridlington, Monarch Hotel	5 days E	£239	12
13th	Skegness, Savoy Hotel	5 days E	£249	5
13th	St Annes on Sea, Monterey Beach	5 days E	£199	8
13th	Great Yarmouth, New Beach	5 days E	£209	10
19th	Llandudno, Evans Hotel	5 days	£235	23
20th	Eastbourne, Haddon Hall	5 days	£245	14
20th	Mill Rythe Holiday Village	5 days	£209	15
20th	Weymouth, Fairhaven Hotel	5 days	£269	13
22nd	Exmouth, Cavendish Hotel	5 days	£249	20
27th	Southport, Royal Clifton Hotel	5 days	£269	7
27th	Paignton, Cambria Hotel	5 days	£239	17
27th	St Annes on Sea, Inn on the Prom Hotel	5 days	£265	8

MAY

Date	Destination, Hotel	Days	£	Pg
3rd	Weymouth, Berkeley Hotel	5 days	£239	13
4th	Torquay, Headland Hotel	5 days	£299	18
4th	Blackpool, Queens Hotel	5 days	£185	6
4th	Weston Super Mare, New Ocean Hotel	5 days	£255	12
8th	Morecambe, Auckland Hotel	4 days	£199	7
8th	Llandudno, Evans Hotel	4 days V E	£209	23
11th	Paignton, Queens Hotel	5 days	£279	17
11th	Llandudno, Evans Hotel	5 days	£249	23
11th	Tenby, Clarence House Hotel	5 days	£295	22
14th	Babbacombe, Hotel De La Mer	5 days	£259	20
16th	Paignton, Cambria Hotel	8 days	£369	17
18th	Skegness, Savoy Hotel	5 days	£265	5
18th	Blackpool, Queens Hotel	5 days	£189	6
20th	Scarborough, Cumberland Hotel	5 days	£265	5
23rd	Eastbourne, Haddon Hall Hotel	8 days	£379	14
24th	Isle of Wight, Bayshore	7 days	£385	25
25th	Blackpool, Park House Hotel	5 days	£255	6
29th	Paignton, Marine Hotel	5 days	£309	17
31st	Ilfracombe, Imperial Hotel	7 days	£319	21

JUNE

Date	Destination, Hotel	Days	£	Pg
1st	Blackpool, Queens Hotel	5 days	£209	6
4th	Llandudno, Evans Hotel	5 days	£269	23
7th	Babbacombe, Hotel De La Mer	7 days	£355	20
8th	Troon, South Beach Hotel	5 days	£289	24
8th	Northumberland, Caledonian	5 days	£259	9
8th	Weston Super Mare, New Ocean	5 days	£269	12
10th	Criccieth, George IV Hotel	5 days	£255	22
14th	Llandudno, Evans Hotel	8 days	£409	23
14th	Newquay, Eliot Hotel	7 days	£359	16
15th	Bridlington, Monarch Hotel	5 days	£295	12
15th	Southport, Royal Clifton Hotel	5 days	£279	7
16th	Isle of Man, Chesterhouse Hotel	6 days	£439	26
19th	Blackpool, Queens Hotel	4 days Fathers Day	£159	6
20th	Eastbourne, Haddon Hall	8 days	£449	14
22nd	Blackpool, Queens Hotel	5 days	£215	6
25th	Llandudno, Evans Hotel	5 days	£269	23
27th	Great Yarmouth, New Beach	8 days	£419	10
27th	Paignton, Cambria Hotel	8 days	£379	17

JULY

Date	Destination, Hotel	Days	£	Pg
4th	Eastbourne, Hadleigh Hotel	8 days	£399	14
5th	Llandudno, Evans Hotel	6 days	£329	23
5th	Paignton, Cambria Hotel	5 days	£269	17
6th	Dunoon, Selbourne Hotel	5 days	£280	24
10th	Paignton, Queens Hotel	8 days	£489	17
13th	Blackpool, Queens Hotel	5 days	£239	6
18th	Weymouth, Berkeley Hotel	8 days	£415	13
19th	Isle of Wight, Shanklin Hotel	7 days	£439	25
19th	Tenby, Clarence House Hotel	6 days	£379	22
20th	Skegness, Savoy Hotel	5 days	£289	5
24th	Llandudno, Evans Hotel	5 days	£269	23
26th	Ilfracombe, Imperial Hotel	7 days	£345	21
27th	Weston Super Mare, New Ocean Hotel	5 days	£289	12
29th	Scarborough, Cumberland Hotel	5 days	£279	5

AUGUST

Date	Destination, Hotel	Days	£	Pg
1st	Eastbourne, Haddon Hall Hotel	8 days	£449	14
3rd	Blackpool, Queens Hotel	5 days	£239	6
3rd	Torquay, Headland Hotel	5 days	£339	18
8th	Eastbourne, Hadleigh Hotel	8 days Air Show	£389	14
10th	Llandudno, Evans Hotel	5 days	£289	23
15th	Exmouth, Cavendish Hotel	5 days	£299	20
16th	Tenby, Clarence House Hotel	6 days	£389	22
16th	Isle of Wight, Shanklin Hotel	7 days	£439	25
17th	Lake District, Crown & Mitre	5 days	£289	9
17th	Blackpool, Park House Hotel	5 days	£269	6
21st	Bridlington, Monarch Hotel	4 days	£239	12
23rd	Bournemouth, Devon Towers	7 days	£389	13
24th	St Annes on Sea, Monterey Beach	5 days	£239	8
26th	Eastbourne, Queens Hotel	5 days	£295	14
31st	Llandudno, Evans Hotel	5 days	£285	23
31st	Southport, Royal Clifton Hotel	5 days	£289	7

SEPTEMBER

Date	Destination, Hotel	Days	£	Pg
2nd	Great Yarmouth, New Beach	5 days	£279	10
4th	Blackpool, Queens Hotel	4 days illuminations	£199	6
5th	Scarborough, Cumberland Hotel	5 days	£269	5
7th	Mill Rythe Holiday Village	5 days	£239	15
7th	Troon, South Beach Hotel	5 days	£289	24
7th	Blackpool, Queens Hotel	5 days illuminations	£249	6
9th	Babbacombe, Hotel De La Mer	6 days	£299	20
12th	Jersey, Mayfair Hotel	8 days	£675	26
13th	Newquay, Eliot Hotel	7 days	£339	16
14th	Weymouth, Berkeley Hotel	5 days	£289	13
14th	Skegness, Queens Hotel	5 days	£279	5
18th	Blackpool, Queens Hotel	4 days illuminations	£195	6
20th	Isle of Wight, Bayshore Hotel	7 days	£349	25
21st	Blackpool, Queens Hotel	5 days illuminations	£249	6
21st	Llandudno, Evans Hotel	5 days	£269	23
21st	Eastbourne, Hadleigh Hotel	5 days	£279	14
25th	Llandudno, Evans Hotel	3 days	£139	23
27th	Torquay, Metropole Hotel	7 days	£289	18
28th	Tenby, Clarence House Hotel	5 days	£299	22
28th	Paignton, Cambria Hotel	5 days	£259	17

OCTOBER

Date	Destination, Hotel	Days	£	Pg
2nd	Criccieth, George IV Hotel	4 days	£179	22
3rd	Cromer, Hotel De Paris	5 days	£229	10
4th	Exmouth, Cavendish Hotel	7 days	£319	20
5th	St Annes on Sea, Monterey Beach Hotel	5 days illuminations	£229	8
5th	Blackpool, Park House Hotel	5 days illuminations	£275	6
12th	Mill Rythe Holiday Village	5 days	£229	15
12th	Paignton, Queens Hotel	5 days	£279	17
12th	Scarborough, Cumberland	5 days	£225	5
16th	Blackpool, Queens Hotel	4 days illuminations	£195	6
19th	Tenby, Clarence House Hotel	5 days	£269	22
19th	Morecambe, Auckland Hotel	5 days	£239	7
19th	Bournemouth, Devon Towers	5 days	£229	13
23rd	Bridlington, Monarch Hotel	4 days	£185	12
23rd	Scarborough, Cumberland	4 days	£179	5
26th	Llandudno, Evans Hotel	5 days T&T	£265	23
26th	Isle of Wight, Bayshore	5 days	£229	25
26th	Blackpool, Queens Hotel	5 days illuminations	£239	6
30th	Babbacombe, Hotel De La Mer	5 days	£259	20

NOVEMBER

Date	Destination, Hotel	Days	£	Pg
2nd	Blackpool, Queens Hotel	5 days T&T	£235	6
2nd	Porthcawl, Seabank Hotel	5 days T&T	£239	21
2nd	Paignton, Palace Hotel	5 days T&T	£315	17
6th	Llandudno, Evans Hotel	4 days	£199	23
9th	Great Yarmouth, New Beach	5 days Thursford	£275	11
9th	Tenby, Clarence House Hotel	5 days T&T	£269	22
9th	Skegness, Savoy Hotel	5 days T&T	£265	5
9th	Exmouth, Cavendish Hotel	5 days T&T	£239	20
13th	Scarborough, Cumberland Hotel	4 days FS	£179	5
16th	Eastbourne, Hadleigh Hotel	5 days T&T	£259	14
16th	Criccieth, George IV Hotel	5 days T&T	£219	22
16th	Blackpool, Queens Hotel	5 days T&T	£235	6
16th	Torquay, Belgrave Sands Hotel	5 days T&T	£329	18
16th	St Annes on Sea, Inn on the Prom	5 days T & T	£279	8
20th	Morecambe, Auckland Hotel	4 days M&W	£199	7
22nd	Llandudno, Evans Hotel	5 days T & T	£269	23
23rd	Scarborough, Cumberland	5 days T&T	£239	5
23rd	Blackpool, Park House Hotel	5 days T&T	£249	6
23rd	Weston Super Mare, New Ocean Hotel,	5 days T & T	£269	12
27th	St Annes on Sea, Monterey Beach	4 days T&T	£165	8
27th	Cromer, Hotel De Paris	4 days Thursford	£259	11
27th	Bridlington, Monarch Hotel	4 days FS	£199	12
30th	Eastbourne, Haddon Hall	5 days T&T	£279	14
30th	Paignton, Queens Hotel	5 days T&T	£285	17

DECEMBER

Date	Destination, Hotel	Days	£	Pg
4th	Llandudno, Evans Hotel	4 days FS	£209	23
4th	Blackpool, Queens Hotel	4 days	£169	6
4th	Great Yarmouth, New Beach	4 days Thursford	£259	11
7th	Mill Rythe Holiday Village	5 days T&T	£239	15
7th	Eastbourne, Hadleigh Hotel	5 days T&T	£259	14
11th	Llandudno, Evans Hotel	5 days FS	£215	23
14th	Cromer, Hotel De Paris	5 days Thursford	£275	11
14th	Blackpool, Queens Hotel	5 days T&T	£235	6
14th	St Annes on Sea, Monterey Beach	5 days T&T	£199	8
14th	Torquay, Headland Hotel	5 days T&T	£289	18
23rd	Blackpool, Queens Hotel	5 days Xmas	£439	6
23rd	Great Yarmouth, New Beach	5 days Xmas	£429	10
23rd	Llandudno, Evans Hotel	5 days Xmas	£439	23
27th	Blackpool, Queens Hotel	4 days TM	£189	6
29th	Llandudno, Evans Hotel	5 days NY	£409	23
29th	Eastbourne, Hadleigh Hotel	5 days NY	£435	14
30th	Scarborough, Cumberland	4 days NY	£389	5
30th	Blackpool, Queens Hotel	4 days NY	£395	6

PW	Pigeon Weekend	M&W	Mistletoe & Wine
MD	Mothers Day	TM	Twixmas
E	Easter	Xmas	Christmas
TT	Turkey & Tinsel	FS	Festive Sparkle
XS	Christmas Shopper	NY	New Year
CB	Cruise Break		

Useful Information



Booking

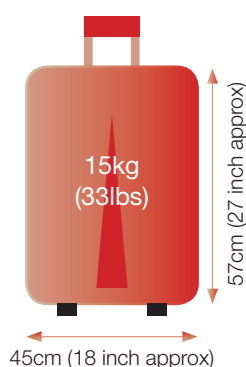
It has never been easier to make a booking with KM Coach Holidays. You are very welcome to call into our Barnsley office where you will be greeted by our friendly well trained staff who will answer any questions and queries. Alternatively just give us a call on: Barnsley 01226 245564

Accessibility

Unfortunately we are no longer able to transport motorised scooters or battery operated wheelchairs. However we are able to transport standard folding wheelchairs and walkers, but due to limited space on board the vehicles we have a limit of two such items. It is essential that we are informed at the time of booking and it is important that passengers check with us the accessibility of the hotel to prevent any problems.

Luggage

Please note that due to space limitations on board the coach, the vehicles operating our 'Door to Door' service and because of Health & Safety Regulations relating to our employees, you are asked to keep luggage to one medium sized suitcase per person together with hand luggage which can be stored safely under your seat on the coach.



Coaches

On the majority of our tours for your peace of mind we use our own drivers and our full executive style coaches with toilet/washroom and drinks facilities on-board. However, on shorter breaks or for events outside our control, we may occasionally use coaches without such facilities.

Coach Holiday Insurance

Holiday Duration	UK	Jersey
Up to 3 days	£16.00	-
4 days	£18.50	-
5 days	£21.00	-
6 days	£25.00	-
7 days	£26.00	-
8 days	£27.00	£40.00

(Rates include insurance premium tax at 20%)

For more information about terms and conditions turn to pages 27 & 28.

Remember

If the price of the holiday is reduced prior to departure you will only have to pay the final price.

Watch out for our great value late availability tours which we will advertise in your local press.

Private Groups

We welcome private groups which we are happy to make arrangements for (ask for details).

Gift Vouchers Available

The Perfect Gift for Birthdays, Christmas & Anniversaries.

Your Financial Security

In order to comply with package tour regulations and to protect clients pre-payments, all monies paid are held in a secure clients account and are controlled by independent persons.

In accordance with EC directives, funds would be available to cover refunds and repatriation in the unlikely event that we should cease to trade, thus giving you complete security and peace of mind.



Yorkshire **Scarborough**



from
£119

A thriving fishing community located on Yorkshire's stunning coastline, Scarborough is arguably one of England's oldest seaside resorts becoming a holiday destination over 400 years ago when the health properties of the Spa waters were discovered. The undisputed 'Queen of the Yorkshire Coast', the town stands between two splendid bays divided by a rugged headland on which sit the remains of a medieval castle. Scarborough offers a wealth of attractions including theatres, parks, cafes, and a vibrant nightlife. The colourful working harbour is a hive of activity whilst the majestic Victorian promenade sweeps between the bays. There are a wide variety of shops to suit all tastes plus stunning floral gardens, in particular South Cliff and the remarkable Peasolm Park with it's oriental influences.

Cumberland Hotel

Extremely well situated on the South Cliff, the three star Cumberland Hotel is just a few minutes walk from the Spa Complex, beach and town centre and affords excellent views of the town from the north facing rooms. Amenities at the hotel include an attractive restaurant, quiet lounge and bar lounge with large dance floor where entertainment is provided most evenings. The Cumberland boasts 86 bedrooms, all of which are equipped with central heating, bath or shower and WC, tea/coffee making facilities, hairdryer and TV with radio channels. There is free wi-fi in public areas and a lift serves all floors (few additional stairs to some rooms).

Departure Date	No of Days	Theme	Board Basis	Holiday Price	Single Supp.	Garden View
Mon 20th Jan	5	Half Price Bar Deal	HB + 1 lunch	£165	Nil	£16
Fri 7th Feb	4	Cabaret Weekend	Half	£119	Nil	£15
Mon 9th Mar	5	Spring Breakaway	HB + 1 lunch	£195	Nil	£20
Fri 27th Mar	4	Cabaret Weekend	Half	£139	Nil	£15
Wed 20th May	5	-	Half	£265	£40	£32
Wed 29th July	5	-	Half	£279	£40	£32
Sat 5th Sept	5	-	Half	£269	£40	£32
Mon 12th Oct	5	Autumn Breakaway	HB + 1 lunch	£225	£28	£20
Fri 23rd Oct	4	-	Half	£179	£21	£15
Fri 13th Nov	4	Festive Sparkle	HB + 1 lunch	£179	£21	£15
Mon 23rd Nov	5	Turkey & Tinsel	HB + 2 lunches	£239	£28	£20
Wed 30th Dec	4	New Year	HB + 1 lunch	£389	£21	£15

Price Includes:

- Accommodation as specified (Spring Breakaway also includes a complimentary glass of wine, beer or a soft drink with dinner each evening)
- Excursions to Whitby and Bridlington (5 days only) Cabaret Weekends calling en-route at McArthurGlen Designer Outlet, York.

(Itinerary may be subject to change on themed breaks)

Lincolnshire **Skegness**



from
£249

Perched on the Lincolnshire coast, Skegness is one of the UK's top seaside resorts and has an abundance of attractions that appeal to all ages. Small enough to offer a friendly atmosphere but large enough to provide hours of entertainment for young and old alike, Skegness burst into life in the 1870s with the arrival of the train and soon became the successful seaside town we know today, also giving rise to it's best known icon - the Jolly Fisherman. The largest resort on this coastline, Skegness boasts miles of award winning golden sandy beaches plus great attractions along the promenade and seafront. Just a few of the highlights include Natureland Seal Sanctuary and Animal Centre, crazy golf, ten pin bowling, the pier, amusements, not to mention the beautifully landscaped gardens that are the envy of the east coast. Nightlife in the resort is varied with a wide selection of bars and restaurants plus a great choice of entertainment including exciting shows and cabarets.

Savoy Hotel

Enjoying an excellent Central Promenade location, the Savoy is one of the resort's premier hotels and is an ideal base to explore many local attractions including the wonderful golden beach, the Embassy Theatre and tournament standard bowling greens. One of Skegness' largest hotels, the Savoy offers 48 stylish bedrooms, all furnished to a very high standard and fully equipped with full en-suite facilities, flat screen digital televisions, electric radio/alarm clocks, hairdryers and hot drink selection. One of the most outstanding attractions at the Savoy Hotel is the excellent dining facilities in the beautiful sea front restaurant where experienced chefs have earned an exceptional reputation for providing sumptuous home cooked, traditional food using only the finest of Lincolnshire produce. Enjoy a drink and meet new friends in the contemporary Savoy Lounge and Bar and relax in comfort to live professional entertainment during the holiday season. The lift serves two floors (unfortunately the lift is unable to accommodate a wheelchair with a seated person).

Departure Date	No of Days	Theme	Holiday Price	Single Supp.
Mon 13th Apr	5	Easter	£249	Nil
Mon 18th May	5	-	£265	Nil
Mon 20th Jul	5	-	£289	Nil
Mon 14th Sep	5	-	£279	Nil
Mon 9th Nov	5	Turkey & Tinsel	£265	Nil

Price Includes:

- Half Board accommodation
 - Excursion to Boston & Spalding
- (Itinerary may be subject to change on themed breaks)

Lancashire **Blackpool**



With a vibrant nightlife, world class shows and the UK's most famous theme park, the nation's favourite holiday resort is unrivalled throughout the world for its popularity. Blackpool continues to attract millions of visitors appealing to everyone, both young and old with a wealth of attractions. With miles of golden sandy beaches broken only by the three piers, whether you're looking for thrills and excitement, family entertainment, historic gems or beautiful gardens, Blackpool has it all. As well as the new seafront there is a huge range of year round attractions including the award winning zoo, Sandcastle Waterpark, Tower Dungeons, Sealife Centre, atmospheric trams and horsedrawn carriages and of course, the Tower Circus.

Why not take a visit to Stanley Park with its showpiece Italian Gardens and boating lake. Blackpool boasts seemingly endless evening entertainment with splendid theatres including the Grand Theatre, the Winter Gardens and the Tower Ballroom all hosting major international artists and national events.

The Park House Hotel

One of Blackpool's premier Hotels, which has an excellent position on Blackpool's prestigious North Promenade and is within walking distance to the town centre and all major attractions. Two lifts service all floors. Entertainment each evening in either the Bar lounge or the elegantly decorated Ballroom caters for all tastes or simply relax in the 80 feet long, sun lounge overlooking the Irish Sea. All 103 en-suite bedrooms have colour tv, radio and tea/coffee making facilities.

The Queens Hotel

Ideally situated on South Promenade between central and south piers, the Queens Hotel is one of Blackpool's larger hotels. It overlooks the Irish Sea and is only a ten minute walk from the famous Pleasure Beach. Generously sized public areas include attractive lounges and an intimate bar. All 117 bedrooms have tea/coffee making facilities, hairdryer and colour television.



Departure Date	No of Days	Hotel	Theme	Itinerary	Holiday Price	Single Supp.	Sea View
Fri 17th Jan	4	Queens	Pigeon Fanciers Weekend	3	£135	Nil	£12
Mon 20th Jan	5	Queens	Half Price Bar HB + 1 Lunch	2	£159	Nil	£16
Fri 7th Feb	4	Queens	Cabaret	3	£129	Nil	£15
Mon 24th Feb	5	Queens	Themed Break	1	£159	Nil	£20
Mon 9th Mar	5	Park House	-	2	£229	Nil	On Request
Mon 16th Mar	5	Queens	Spring Breakaway/Half Price Bar	1	£159	Nil	£20
Fri 20th Mar	3	Queens	Cabaret	3	£129	Nil	£10
Mon 6th Apr	5	Queens	Sping Breakaway	2	£169	Nil	£20
Mon 4th May	5	Queens	Half Price Bar	2	£185	£40	£32
Mon 18th May	5	Queens	Themed Break	1	£189	£40	£32
Mon 25th May	5	Park House	Spring Bank Holiday	1	£255	Nil	On Request
Mon 1st Jun	5	Queens		1	£209	£40	£32
Fri 19th Jun	4	Queens	Father's Day Weekend	3	£159	£30	£24
Mon 22nd Jun	5	Queens	-	1	£215	£40	£32
Mon 13th Jul	5	Queens	-	1	£239	£40	£32
Mon 3rd Aug	5	Queens	-	2	£239	£40	£24
Mon 17th Aug	5	Park House	-	2	£269	Nil	On Request
Fri 4th Sep	4	Queens	Illuminations	3	£199	£30	£24
Mon 7th Sep	5	Queens	Illuminations	1	£249	£40	£32
Fri 18th Sep	4	Queens	Illuminations	3	£195	£30	£24
Mon 21st Sep	5	Queens	Illuminations	1	£249	£40	£32
Mon 5th Oct	5	Park House	Illuminations	1	£275	Nil	On Request
Fri 16th Oct	4	Queens	Illuminations	2	£195	£21	£15
Mon 26th Oct	5	Queens	Illuminations	1	£239	£40	£20
Mon 2nd Nov	5	Queens	Turkey & Tinsel plus two lunches	2	£235	£28	£20
Mon 16th Nov	5	Queens	Turkey & Tinsel plus two lunches	2	£235	£28	£20
Mon 23rd Nov	5	Park House	Turkey & Tinsel	2	£249	Nil	On Request
Fri 4th Dec	4	Queens	Festive Sparkle	3	£169	£21	£15
Mon 14th Dec	5	Queens	Turkey & Tinsel HB plus two lunches	1	£235	£28	£20
Wed 23rd Dec	5	Queens	Christmas HB plus two lunches	TBA	£439	£28	£20
Fri 27th Dec	4	Queens	Twixmas Full Board	TBA	£189	£21	£15
Wed 30th Dec	4	Queens	New Year HB plus one lunch	TBA	£395	£21	£15

Price Includes:

- Half Board or as specified
- Excursions - Itin 1 - Morecambe, Cleveleys and Fleetwood
Itin 2 - Southport, Cleveleys and Fleetwood
Itin 3 - Cleveleys and Fleetwood
- Plus illuminations tour during light season (Sep/Oct)
- Spring Breakaway/Cabaret Weekend includes a complimentary glass of wine, beer or a soft drink with dinner each evening
- Queens Hotel - Half Price Bar offer Mon – Thurs on all midweek tours up to 31st May 2020

(Itinerary may be subject to change on themed breaks)

Lancashire **Morecambe**



from
£199

Situated on the edge of the famed Morecambe Bay, with stunning panoramic views across the bay and beyond to the rolling Lakeland hills, Morecambe is once again becoming one of the nation's best loved resorts and the perfect place for a traditional seaside holiday. A multi million pound renovation project has helped return the town to its former popularity and it is now a vibrant, modern resort with miles of level promenade, traditional courtesy and hospitality plus year round entertainment. It can also boast great shopping with an Arndale Centre and the famous 'Festival Market' on the promenade.

Auckland Hotel

A family owned and run hotel situated on Morecambe's central promenade, offering a warm welcome and personal service. The Auckland Hotel is well placed for all the resort's main amenities and provides nightly entertainment. There is a sun lounge, separate television lounge and a lounge bar with a relaxed atmosphere. All bedrooms are equipped with colour television, and tea/coffee making facilities.



Departure Date	No of Days	Theme	Holiday Price	Single Supplement
Mon 6th Apr	5	-	£229	Nil
Fri 8th May	4	-	£199	Nil
Mon 19th Oct	5	-	£239	Nil
Fri 20th Nov	4	Mistletoe & Wine	£199	Nil

Price Includes:

- Half Board Accommodation
- Excursions to Lake District (4 days) plus St Annes on Sea (5 days)

Lancashire **Southport**



from
£269

The classic resort of Southport is the perfect destination for a short break. With over twenty two miles of coastline boasting a number of beautiful beaches and stunning natural beauty, it offers great attractions including superb shopping and a mouthwatering array of restaurants. It is rumoured that Napoleon III re-modelled certain parts of Paris based on his knowledge of Southport during his stay in the town back in the mid nineteenth century. Home to one of the oldest piers in the country, the town is also known as England's golfing capital boasting a total of six championships courses. Add to this a vibrant nightlife, the splendor of Lord Street with its unique range of shops, beautifully scenic parks and gardens and you'll understand why Southport appeals to all ages and interests.

Best Western - Royal Clifton Hotel And Spa

Undoubtedly one of Southport's finest hotels and with an enviable position on the Promenade, the Royal Clifton Hotel is just a short walk from fashionable Lord Street. A traditional Victorian hotel noted for its exceptional range of facilities and excellent standard of service, over recent years the hotel has been thoughtfully refurbished to offer the comfort you expect in the best location in Southport. As well as the pleasant sea views you'll find Kings Gardens right on your doorstep. All bedrooms are en-suite and offer flat screen TV with satellite channels, hospitality tray, free wifi access, hairdryer and telephone. One of the qualities of the hotel is the food choice on offer, the finest local produce served in delightful surroundings. The health and leisure club within the hotel offers a superb heated indoor swimming pool, bubbling Jacuzzi opening on to the private patio garden, a fully equipped gymnasium, poolside sauna and steam room. (Please note there is no entertainment at this hotel).

Departure Date	No of Days	Holiday Price	Single Supp.
Mon 27th Apr	5	£269	Nil
Mon 15th Jun	5	£279	Nil
Mon 31st Aug	5	£289	Nil

Price Includes:

- Half Board Accommodation
- Excursions to St. Annes & Barton Grange and Liverpool

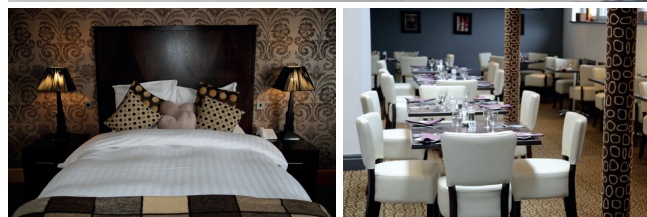
Lancashire **St. Annes on Sea**



Just three miles from the bright lights of Blackpool, St. Annes on Sea is worlds apart in both character and atmosphere. Warm and friendly, with a timeless classic style, there is something for all the family. Nestled along a picturesque stretch of coastline lined with well tended lawns, a boating lake and pretty parks, St. Annes on Sea town centre has been completely regenerated over recent years to offer a charming experience. Take a stroll along the promenade and you'll find the beautifully preserved Victorian Pier, originally built in 1885 and now home to amusement rides, shops and a café.

The Inn on the Prom

Situated on the sea front overlooking the Irish Sea, this family run hotel offers 100 bedrooms all with tea/coffee making facilities, colour televisions, direct dial telephones and hairdryers. There is a lift to all floors however some rooms have a few steps to negotiate. Amenities at the hotel include two restaurants, swimming pool, snooker room and nightly entertainment.



Monterey Beach Hotel

The Monterey Beach is a 32 bedroom family owned and run hotel which offers a warm and friendly atmosphere, situated on the beach front at North Promenade it's within a short walking distance of the pier, shops and cafes. Most of the rooms have views out across the Irish Sea, along with colour television and tea/coffee making facilities.



Departure Date	No of Days	Hotel	Theme	Holiday Price	Single Supp.
Mon 27th Jan	5	Monterey Beach	-	£179	Nil
Mon 16th Mar	5	Monterey Beach	-	£185	Nil
Mon 13th Apr	5	Monterey Beach	-	£199	Nil
Mon 27th April	5	Inn on the Prom	-	£265	Nil
Mon 24th Aug	5	Monterey Beach	-	£239	Nil
Mon 5th Oct	5	Monterey Beach	Illuminations	£229	Nil
Mon 16th Nov	5	Inn on the Prom	Turkey & Tinsel	£279	Nil
Fri 27th Nov	4	Monterey Beach	Turkey & Tinsel	£165	Nil
Mon 14th Dec	5	Monterey Beach	Turkey & Tinsel	£199	Nil

Price Includes:

- Half Board Accommodation
- Excursions to :
Fleetwood/Cleveleys or Blackpool (4 day tours)
Cleveleys/Fleetwood and Southport (5 day tours) plus illuminations tour in season
(Itinerary may be subject to change on themed breaks)

Northumbria



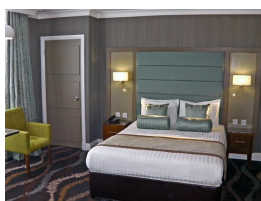
only
£259

Hadrians Wall and Holy Island

With its wild landscapes and dramatic coastline, Northumberland is undoubtedly one of the most beautiful counties in England. Dominated by imposing castles, the enchanting coastline has great sweeps of sandy beaches and sheltered bays interrupted by high jutting cliffs. Hadrians Wall is one of England's greatest landmarks and leaves a lasting impression on any who visit. It is the best preserved frontier of the Roman Empire and our nation's finest Roman monument. Archaeological sites and museums along the wall tell the story of Rome's rise and fall, not to mention the stunning landscape and views unchanged since Roman times. The delightful unspoiled Holy Island lies just off the extreme northeast corner of England. A tidal island that is accessed by a paved causeway which is covered by the North Sea twice every day, Lindisfarne is famous both for its medieval religious heritage and its more recent picturesque 16th century castle.

Caledonian Hotel

Set in the heart of Jesmond, a chic and leafy area just one mile from Newcastle city centre with a vibrant bar and café culture, the Caledonian is a comfortable, friendly hotel combining Georgian architecture with a contemporary edge. The hotel boasts a small lounge area near the reception and the Billabong Bar and Bistro offers a pleasant atmosphere. The hotel boasts 91 bedrooms, all of which are en-suite with bath or shower, satellite TV, direct dial telephone, hair dryer and tea/coffee making facilities (Please note no entertainment during this tour).



Departure Date	No of Days	Holiday Price	Single Supp.
Mon 8th Jun	5	£259	£60

Price Includes:

- Half Board Accommodation
- Excursions to Holy Island, Hexham & the Roman Wall plus Durham City (en-route)

Carlisle and The Lake District



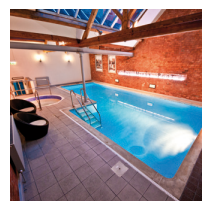
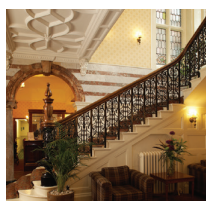
only
£289

Home of Beatrix Potter, dramatic landscapes and a fascinating history, the Lake District is England's largest National Park, famous for its lakes, forests and mountains including Scafell Pike, the highest in England. It also boasts the deepest and largest lakes in England, Wastwater and Windemere. Our base for this tour is Carlisle, a city and county town of Cumbria that was established originally as a Roman settlement to serve the forts on Hadrians Wall. Today the city lies at the heart of a wealth of historic and modern attractions. From Roman civitas to Norman stronghold, medieval market town to contemporary city, Carlisle offers a huge choice of attractions to enjoy including museums, art galleries, outdoor and indoor recreation, award winning parks and relaxing open spaces. Not to mention the gateway to the stunning Lake District.

Crown and Mitre Hotel

Located in the heart of historical Carlisle, the Crown and Mitre is one of the Peel group of hotels and offers the perfect mix of Edwardian grandeur, beautiful original features including a real log fire and elegant sweeping staircase plus all the comforts of home to create a relaxed and friendly atmosphere. The hotel boasts 94 bedrooms, all with en-suite facilities, LCD televisions with freeview, tea/coffee making facilities and hairdryer. Amenities include restaurant, two bars, indoor swimming pool and Jacuzzi. A lift serves most bedrooms.

(Please note no entertainment during this tour)



Departure Date	No of Days	Holiday Price	Single Supp.
Mon 17th Aug	5	£289	£64

Price Includes:

- Half Board Accommodation
- Excursions to Ullswater and Keswick

Norfolk Great Yarmouth



from
£95

The popular coastal town of Great Yarmouth is East Anglia's top seaside venue. Set on fifteen miles of wide, flat golden sand with a lively promenade, the town boasts a wealth of excellent entertainment and recreational facilities, sports and shopping. There are two piers, a model village, Butterfly Centre and Sealife Centre to name but a few. Take a stroll along the promenade or take a ride in one of the unique horse-drawn landaus. At night the resort is illuminated and is renowned for its live entertainment with a wide variety of shows and concerts. The main shopping streets can be found just off the ancient harbour and offer a pleasant mix of high street stores and traditional seaside shops. The miles of golden sandy beaches have won numerous awards for cleanliness and both the attractive Anchor Gardens and St. Georges Park provide seating for moments of relaxation.

New Beach Hotel

One of the Leisureplex group of hotels, the New Beach Hotel is ideally located in Great Yarmouth's most central location, on the sea front opposite the Britannia Pier and adjacent to the shops and resort amenities. The hotel boasts 75 bedrooms, all of which are equipped with bath or shower and WC, central heating, tea/coffee making facilities, internal phone, hairdryer and TV with radio channels. Facilities include a spacious cocktail bar/lounge, magnificent restaurant, large dance floor and entertainment most evenings. There is free wi-fi in public areas and a small lift serves most rooms.

Departure Date	No of Days	Theme	Board Basis	Holiday Price	Single Supp.	Sea View
Fri 28th Feb	3	Cabaret	Half	£95	Nil	£10
Mon 30th Mar	5	Spring Breakaway	HB +1 lunch	£189	Nil	£20
Mon 13th Apr	5	Easter Break	Half	£209	£28	£20
Sat 27th Jun	8	-	Half	£419	£70	£56
Wed 2nd Sept	4	-	Half	£279	£40	£32
Wed 23rd Dec	4	Christmas	HB +2 lunches	£429	£28	£20

Price Includes:

- Accommodation/Board as specified (Spring Breakaway 30th Mar also includes complimentary glass of wine, beer or a soft drink with dinner each evening)
- Excursions to Norwich and Lowestoft (5 days) plus Norfolk Broads (8 days)

(Itinerary may be subject to change on themed breaks)

Norfolk Cromer



from
£189

Set amidst the pleasant countryside of North Norfolk, Cromer is a vibrant town with a wide variety of attractions. The quaint narrow Victorian streets are home to some delightfully atmospheric pubs and there is a wealth of traditional seaside shops, restaurants and galleries. Once a small fishing village, Cromer became a distinctly upper class holiday resort during the Victorian era when it became a favourite destination for royalty. Full of character, narrow twisting streets and a lovely promenade overlook its sandy beach. Relax in the colourful gardens or take advantage of one of the many leisure activities on offer including bowling green, tennis courts, pitch and putt or maybe take in a show at the famous Pier Pavilion. As you would expect of a seaside town, Cromer is rich in fishing heritage and is world famous for its tasty crabs. The town has a proud tradition of the RNLI service and it has been said that the lifeboat is the lifeblood of Cromer – the museum offers a great insight into the service's past history.

Hotel de Paris

A delightful and unusual Grade II listed building, the three star Hotel de Paris occupies one of the finest positions in Cromer, close to the shops and historic parish church and overlooking the beach and pier. The delightful restaurant is split into two sections with interesting stained glass windows and a small dance floor with entertainment most evenings. Other facilities include a magnificent reception lounge with splendid architectural detail, attractive bar overlooking the sea, small TV lounge and games room with pool, table tennis and darts. There is a lift in the hotel (although there are steps throughout and some bedrooms are accessible via stairs). All bedrooms are equipped with bath or shower and WC, tea/coffee making facilities, hairdryer and Freeview TV with radio channels.

Departure Date	No of Days	Theme	Board Basis	Holiday Price	Single Supp.	Sea View
Mon 2nd Mar	5	Spring Breakaway	HB + 1 lunch	£189	Nil	£20
Sat 3rd Oct	5	Autumn Breakaway	HB + 1 lunch	£229	£28	£20

Price Includes:

- Accommodation as specified (Spring Breakaway includes complimentary glass of wine, beer or a soft drink with dinner each evening)
- Excursions to Norwich and North Norfolk Coast

Thursford Christmas Spectacular



One of the largest shows of its kind in Europe, Thursford Christmas Spectacular is an event not to be missed. Set in the magical surroundings of mechanical organs and fairground carousels, with a cast of 130 professional singers, many of whom are West End performers, the three hour performance delivers an extravaganza of non-stop singing, dancing, music, humour and variety. It is a fast moving celebration of the festive season featuring a mix of both seasonal and year round favourites, with famous and much loved chart toppers being sung alongside traditional carols.



Departure Date	No of Days	Hotel	Holiday Price	Single Supp.	Sea View
Mon 9th Nov	5	New Beach	£275	£28	£20
Fri 27th Nov	4	Hotel De Paris	£259	£21	£15
Fri 4th Dec	4	New Beach	£259	£21	£15
Mon 14th Dec	5	Hotel De Paris	£275	£28	£20

Price Includes:

- Half Board Accommodation
- Entrance Ticket to Thursford Christmas Spectacular

Somerset **Weston Super Mare**



from
£255

With all the facilities of a traditional seaside town, Weston Super Mare is ideally positioned on the coast of the West Country. With views across the Bristol Channel to South Wales, it is the perfect base to explore the stunning scenery of the Mendips including the famous Cheddar Gorge. The nineteenth century saw Weston develop from a tiny village of around one hundred inhabitants to a thriving Victorian seaside resort. Today visitors can enjoy a wealth of attractions including shopping centres, the famous Winter Gardens plus big name artists performing at the Pavilion Theatre, Sealife Centre and the magnificent Grand Pier which was completely rebuilt in 2010. Weston's narrow streets are home to a variety of antique and craft shops. Relax on the clean sandy beach that stretches for over a mile, or enjoy the stunning floral beauty of Grove Park and Prince Consort Gardens.

New Ocean Hotel

With a warm welcome and excellent service, the New Ocean is a family run hotel situated opposite Weston's famous Marine Lake and affording panoramic views over Weston Bay and beyond. Just a few minutes stroll to the town centre and gardens, it boasts an unrivalled position in the promenade. The Ocean restaurant offers a varied menu and prides itself on freshly prepared dishes that combine the best of both traditional and modern cuisine. There is a large dancefloor with regular entertainment in the comfortable bar/lounge with a fully stocked and licensed bar open throughout the day and late into the evening. All bedrooms are equipped with full modern en-suite facilities, direct dial telephone, flat screen digital TV, hairdryer and hospitality tray. Many bedrooms have level access from the lift

Departure Date	No of Days	Theme	Board Basis	Holiday Price	Single Supp.
Mon 4th May	5	-	Half	£255	Nil
Mon 8th Jun	5	-	Half	£269	Nil
Mon 27th Jul	5	-	Half	£289	Nil
Mon 23rd Nov	5	Turkey & Tinsel	Half	£269	Nil

Price Includes:

- Half Board Accommodation
- Excursions to Bath and Cheddar Gorge (5 days) plus Wells and Street (7 days)

East Yorkshire **Bridlington**



from
£189

Bridlington has an historic old town, long promenade, sandy beach and cliff top walks with views of the trawler port. With its sandy beaches, award winning promenades and historic harbour, Bridlington is a hidden seaside gem awash with traditional entertainment

Monarch Hotel

Located in a prominent seafront location on Bridlington's South Beach, the Monarch Hotel offers breathtaking panoramic sea views in a peaceful setting. Situated close to the Spa Theatre and a short walk to the busy fishing harbour which is alive the colourful trawlers and pleasure boats, the Monarch is the perfect base for exploring Bridlington. The hotel features an onsite restaurant and comfortable bar area, as well as a good size dance floor where entertainment is regularly featured. A lift serves 6 out of 7 floors. All 41 bedrooms are en-suite have tea/coffee making facilities, hairdryer and television.



Departure Date	No of Days	Theme	Holiday Price	Single Sup.	Sea View
Mon 2nd Mar	5	Spring Breakaway	£189	Nil	£20
Mon 15th Jun	5	-	£295	£40	£32
Fri 21st Aug	4	-	£239	£21	£15
Fri 27th Nov	4	Festive Sparkle	£199	£21	£15

Price Includes:

- Half Board Accommodation (Spring Breakaway/Festive Sparkle plus one lunch)
- Excursions to Scarborough (4 days) plus Whitby 5 days

Dorset **Weymouth**



from
£189

One of the UK's most beautiful seaside resorts and blessed with one of it's sunniest and warmest climates, Weymouth offers a huge amount of attractions and is ideally placed for exploring the beautiful county of Dorset. This classic seaside resort, with it's idyllic harbour nestles perfectly alongside the 'Isle' of Portland. It's fine Georgian seafront is an impressive backdrop to the long arc of fine, golden sand whilst the beach and Esplanade, historic harbour, marina and nature reserve encircle the town centre, creating a resort that is both modern and traditional. Standing on Weymouth's Esplanade, the Weymouth Pavilion offers a wide range of exciting shows and events to suit all ages.

Berkeley Hotel

An original Georgian listed building, the Berkeley Hotel is centrally located on the seafront offering stunning views of Weymouth Bay, across to Portland Harbour and the rugged Dorset cliffs. The hotel offers 51 en-suite bedrooms, all of which are equipped with hospitality tray, colour TV and hairdryer. A lift serves all floors (a few rooms on the first floor are accessed by a flight of stairs). Situated on the lower ground floor and with lift access, the fresh and bright dining room offers freshly cooked meals at breakfast and dinner with a varied menu that changes daily. There is a large bar with dancefloor and the hotel also offers regular live entertainment.

Fairhaven Hotel

The Fairhaven is ideally situated on the esplanade, overlooking Weymouth Bay with uninterrupted views of the magnificent Jurassic coastline. Hotel facilities include a residents' lounge bar, full air-conditioned restaurant and a passenger lift that serves all floors.

Departure Date	Hotel	No of Days	Holiday Price	Single Supp.	Sea View
Mon 20th April	Fairhaven	5	£269	£20	On Request
Sun 3rd May	Berkeley	5	£239	£12	£18
Sat 18th Jul	Berkeley	8	£415	£21	£31.50
Mon 14th Sep	Berkeley	5	£289	£12	£18

Price Includes:

- Half Board Accommodation
- Excursions to :
Bournemouth plus Poole and Swanage (5 days)
Swanage & Poole, plus Dorchester & Portland Bill (8 days)

Dorset **Bournemouth**



from
£229

With seven miles of golden sandy beach and clear blue seas, Bournemouth has become a vibrant, cosmopolitan town boasting an incredible variety of shops, restaurants and nightlife. Often described as the 'Garden City by the Sea', Bournemouth is situated on top of spectacular chalk cliffs and offers an array of award winning clifftop gardens including the Alum Chine Gardens and Boscombe's Italianate Gardens. A shopper's paradise, there are a variety of department stores and High Street names whilst Westover Road, also known as the Bond Street of Bournemouth, has a selection of smaller retailers along a tree lined boulevard. The resort offers a wealth of entertainment for all ages at it's top venues including the Bournemouth International Centre and Bournemouth Pavilion whilst other attractions include the Oceanarium, Boscombe Surf Reef and an array of watersports. The town's latest attraction is the Bournemouth Eye, a tethered balloon which takes visitors to a height of five hundred feet giving unprecedented views over the town and surrounding countryside.

Devon Towers Hotel

This AA three star rated hotel, the Devon Towers is ideally located on Bournemouth's West Cliff, close to the seafront, International Centre, shops and pier. The hotel offers an attractive entrance lounge, delightful bar lounge with TV and a spacious entertainment room with dance floor where entertainment is provided most evenings. There is a lift to all floors (a few steps to some rooms) and free wi-fi in public rooms. The Devon Towers boasts sixty bedrooms, all of which have heating, bath or shower and wc, tea/coffee making facilities, hairdryer and freeview TV with radio channels.

Departure Date	No of Days	Theme	Board Basis	Holiday Price	Single Supp.
Mon 30th Mar	5	Spring Breakaway	Half Board plus one lunch	£229	Nil
Sun 23rd Aug	7	-	Half	£389	£60
Mon 19th Oct	5	Autumn Breakaway	Half Board plus one lunch	£229	£28

Price Includes:

- Accommodation as specified
- Excursions to the Swanage, Poole and the New Forest



Sheltered by the rolling South Downs on one side and Beachy Head on the other, Eastbourne enjoys a sunny location on the south coast. Often described as one of England's more elegant resorts, the town grew as a fashionable tourist resort largely thanks to the Duke of Devonshire in the nineteenth century and has been a popular destination ever since. The promenade stretches for five miles and is lined with mainly Victorian hotels and the colourful, award winning Carpet Gardens. On the whole fairly uncommercialised there is a traditional pier with concerts at the Bandstand whilst shopping is varied, from the modern Arndale Centre to the Little Chelsea Quarter selling antiques, ceramics and jewellery.

Hadleigh Hotel

Ideally located on Burlington Place, just 60 yards from Grand Parade, Eastbourne's seafront and only minutes level walk from the Bandstand, Carpet Gardens and main shopping area, you are assured of a warm and personal welcome at the Hadleigh Hotel. Facilities at the Hadleigh include pleasant lounge areas, cocktail bar and lift. Entertainment and dancing can be enjoyed most evenings in the ground floor lounge with it's own dance floor. The Hadleigh has gained an enviable reputation for excellent traditional food served in the bright and modern restaurant. All 62 attractively furnished bedrooms offer en-suite facilities, colour TV, hospitality tray and central heating

Queens Hotel

This magnificent Victorian Hotel is situated in an outstanding position overlooking the pier. Spacious public rooms include a public bar, sun lounge and two restaurants. Several function rooms including the Princes Suite with its own bar where entertainment is provided most evenings. Two lifts serve all floors and a wheelchair lift is now available between the ground floor's two levels.



Haddon Hall Hotel

Enviably located on a broad tree-lined avenue at the seafront end of Devonshire Place, the Haddon Hall is situated across from the Bandstand and just a short stroll from the Victorian Pier. A firm favourite for many years, the Haddon Hall has a reputation for excellent food, producing traditional English cuisine with modern variations served in the tasteful restaurant. Entertainment can be enjoyed most evenings in the refurbished ballroom, now accessible by the lift and free wi-fi is available in the lounge area. All of the 75 bedrooms are modern and well-furnished and equipped with central heating, colour TV, tea/coffee making facilities and hairdryers.

Departure Date	No of Days	Hotel	Theme	Holiday Price	Single Supp.	Sea View
Mon 27th Jan	5	Queens	Spring Break Away (Half Price Bar Deal)	£179	Nil	£16
Mon 10th Feb	5	Hadleigh	-	£159	Nil	-
Mon 2nd Mar	5	Haddon Hall	-	£199	Nil	-
Mon 23rd Mar	5	Queens	Spring Break Away	£219	Nil	£20
Mon 20th Apr	5	Haddon Hall	-	£245	Nil	-
Sat 23rd May	8	Haddon Hall	Spring Bank Holiday	£379	Nil	-
Sat 20th Jun	8	Haddon Hall	-	£449	Nil	-
Sat 4th Jul	8	Hadleigh	-	£399	Nil	-
Sat 1st Aug	8	Haddon Hall	-	£449	Nil	-
Sat 8th Aug	8	Hadleigh	Air Show	£389	Nil	-
Sat 26th Aug	5	Queens	-	£295	£40	£32
Mon 21st Sep	5	Hadleigh	-	£279	Nil	-
Mon 16th Nov	5	Hadleigh	Turkey & Tinsel	£259	Nil	-
Mon 30th Nov	5	Haddon Hall	Turkey & Tinsel	£279	Nil	-
Mon 7th Dec	5	Hadleigh	Turkey & Tinsel	£259	Nil	-
Sun 29th Dec	5	Hadleigh	New Year	£435	nil	-

Price Includes:

- Half Board Accommodation (Spring Breakaway also includes 1 lunch and complimentary drink)
- Excursions
5 & 6 days – Beachy Head & Alfriston plus Brighton (excluding New Year – itinerary to be advised)
7 & 8 days – As 5 days plus Royal Tunbridge Wells

Airborne Show is August 13th to 16th, 2020
(Itinerary may be subject to change on themed breaks)

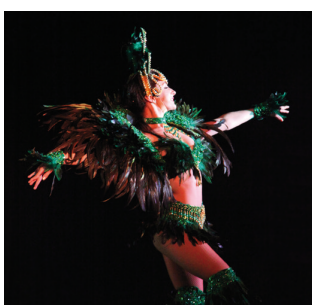
Hampshire Hayling Island



from
£179

Mill Rythe Holiday Village

Mill Rythe is the perfect place to take a well-earned break and you'll soon discover that the choice is yours to do as much or as little as you like. The fantastic activity programme at the resort can keep you busy all day or, if you prefer, just sit and relax til your hearts content. Facilities at the resort include the Boathouse Bar, large outdoor swimming pool, heated indoor pool with sauna, tennis court, petanque court, abseiling tower, crazy golf, fishing lake, beauty salon and gift shop. But it is at night that Mill Rythe really comes alive. On every break you will enjoy glittering entertainment from the Mill Rythe show cast, the resident five piece band, top visiting cabaret artistes and theatrical stage shows. All of the entertainment is enjoyed in the ballroom which is fully air conditioned and under the same roof as the restaurant, so only a short walk away. Before the glitz and glamour starts there is a game of bingo or quiz alternative and then, when the lights go down and the curtain goes up, expect a wonderful entertainment filled evening. The restaurant serves a hearty full English breakfast and a superb three course dinner. The comfortable bedrooms are equipped with en-suite shower or bath, central heating, TV and tea/coffee making facilities.



HALF PRICE BAR

(February, April, October & December departures only)

Each evening between 7.00 p.m. & midnight on selected 'House Drinks' including selected beers, wines, spirits & soft drinks.

Themes

The Best of Movies & Musicals - Celebrate best-loved musicals from the West End, Broadway and the Silver Screen with show stopping cinema and live music from the Mill Rythe live show cast

Show Time Variety/St George's Day Special - Jam packed with fabulous activities and entertainment and show stopping performances from the Away Resorts Theatre Company. Celebrate everything that is quintessentially English, dance the night away with music through the eras.

Turkey and Tinsel Festive Spectacular - Celebrate Christmas and New Year in one fabulously festive Showbreak with sparkling entertainment from the Mill Rythe show cast and visiting cabaret.

Departure Date	No of Days	Theme	Board Basis	Holiday Price	Single Supp.
Mon 24th Feb	5	Best of Movies & Musicals	HB	£179	Nil
Mon 20th Apr	5	Showtime Variety	HB	£209	Nil
Mon 7th Sept	5	Best of Movies & Musicals	HB	£239	Nil
Mon 12th Oct	5	Showtime Variety	HB	£229	Nil
Mon 7nd Dec	5	Turkey & Tinsel	HB	£239	Nil

Price Includes:

- Accommodation as specified
- Excursions to Portsmouth and Chichester

Cornwall Looe



only
£255

Looe is a small coastal town in the South East of Cornwall, divided into two parts by the River Looe. East Looe is the main tourism centre - a collection of narrow streets lined with shops, cafes and pubs that lead through to the main town beach. Looe has managed to retain its small fishing fleet which return at high tide to off load their catch along the quayside at the busy fish market. Linked by a Victorian bridge, West Looe has its own individuality and character. A long harbour arm, the 'Banjo Pier' protects the east side of the mouth of the river whilst the west side is naturally protected by the rocky riverbank and coast line. Looe has a good selection of shops including some excellent arts and crafts and souvenir shops plus an excellent choice of Cornish Pasty shops, pubs and restaurants.

Portbyhan Hotel

In an unrivalled position right in the heart of Looe, the Portbyhan Hotel is just a short stroll from the town centre affording stunning panoramic views of the vibrant harbour. The hotel has in recent years undergone an extensive refurbishment leading to winning 'Best Individual Hotel' at the prestigious National Coach Tourism Awards. Situated on the roof of the hotel is the spectacular Portside brasserie and Terrace which is the perfect location to unwind and relax whilst the bar has a warm and welcoming feel, furnished with modern seating and serving a wide selection of wines, spirits and local guest ales. The restaurant offers an expertly chosen menu boasting hearty Cornish food and fresh local produce. The comfortable bedrooms are all equipped with en-suite bathroom, tea/coffee making facilities, LCD TV with freeview channels and hairdryer. There is entertainment most evenings, complimentary wi-fi access in public areas and a lift to all floors.



Departure Date	No of Days	Holiday Price	Single Supp.
Mon 23th Mar	5	£255	Nil

Price Includes:

- Half Board Accommodation
- Excursions to Plymouth and Mevagissey

Cornwall Newquay



from
£339

Voted one of the country's favourite seaside towns, Newquay is Cornwall's premier holiday resort boasting no fewer than eleven beaches and arguable one of the finest coastlines in Europe. Britain's surfing capital, Fistral Beach is a surfers paradise hosting many competitions each year both national and international, whilst Tolcarne and Great Western are the most popular offering golden sand and safe bathing as well as stunning cliff walks. Dating back to the fifteenth century, there are hidden coves and smugglers pubs, a reminder of the colourful history of the area. Today, modern shops sit alongside quaint alleyways with an abundance of craft and antique shops and traditional tea rooms. Newquay's picturesque harbour is a hidden gem, where local fishermen still bring in their catch each day. Other attractions include golf, tennis, putting and bowls or make a visit to beautiful Trenance Gardens a variety of wildlife or Newquay Zoo and the Waterland Leisure Centre.

Eliot Hotel

In a central location, just 50 metres from the seafront and close to Great Western and Tolcarne Beaches, the three star Eliot Hotel is within easy walking distance of the shops and picturesque harbour. Facilities at the hotel include a bar lounge with dance floor, three relaxing lounges, games room with table tennis and pool, outdoor swimming pool (heated May to September), free wi-fi in public areas and ballroom with entertainment most evenings. The hotel boasts 76 bedrooms, all of which are fully equipped with en-suite bathroom, tea/coffee making facilities, hairdryer and freeview TV with radio channels. There is central heating throughout and a lift serves most rooms although all floors (including ground floor) are split level with some intermediate stairs.

Departure Date	No of Days	Theme	Hotel	Holiday Price	Single Supp.
Sun 14th Jun	7	-	Eliot	£359	£60
Sun 13th Sep	7	-	Eliot	£339	£60

Price Includes:

- Half Board Accommodation
- Excursions to Truro, Falmouth and Padstow

Devon Paignton



from
£229

A popular family resort on the beautiful South Devon coastline, Paignton is part of the stunning English Riviera. Like all of Torbay, Paignton was frequented by the Victorians and some of the architecture still remains. A relatively large resort, the extensive level seafront bustles with a wealth of traditional seaside entertainments, Goodrington Promenade with its beautiful illuminated gardens, the sheltered harbour and the gently sloping, sandy beaches. There is an abundance of pavement cafes, pubs and restaurants, quality shopping and a host of visitor attractions to suit every taste including the Dart Valley Steam Railway, Palace Avenue Theatre and the famous Paignton Zoo, home to thousands of animals.



The Palace Hotel

Set in beautiful grounds, the Palace Hotel has the perfect location, right on the Esplanade, directly opposite Paignton seafront and a short flat walk to the town centre. Some of the facilities at the hotel include a spacious elegant restaurant, relaxing gardens and terrace overlooking gardens and seafront, health suite with large indoor heated swimming pool, Washington Bar with television and pool table plus entertainment each evening and a lift to the bedrooms. The Palaces 55 bedrooms are all en-suite and are equipped with colour television, hairdryer, trouser press and tea/coffee making facilities.

Price Includes:

- Half Board Accommodation
- Excursions
5 days - Dartmouth and Teignmouth
8 days - as 5 days plus Plymouth

Cosy Break includes tea/coffee and biscuits on arrival, quiz or bingo with tea/coffee and biscuits one afternoon plus live cabaret every evening.

(Itinerary may be subject to change on themed breaks)



The Queens Hotel

Just 200 yards level walk from the town centre and seafront the Queens Hotel is the ideal location for your stay in Paignton. One of the excellent Duchy group of hotels, the Queens is tastefully decorated throughout and offers nightly entertainment, lounge with dance floor, fine restaurant and heated indoor swimming pool. There is a lift to all floors and all bedrooms are equipped with en-suite facilities, beverage tray and colour television.



Marine Hotel

Situated on a level position, directly opposite Paignton seafront and a short walk to the town centre. The Marine hotel has 53 en-suite bedrooms that are airy, modern and light yet highly comfortable with a conservatory boasting panoramic view of Paignton seafront and hotel lounge for excellent entertainment. There is a lift to all floors and all rooms are equipped with beverage making facilities, television and hairdryers.



Cambria Hotel

Situated on the seafront with magnificent views over Torbay, the cuisine is excellent and plentiful with a choice of menu and the hotel is personally supervised by the proprietors. There is a lift to all floors and all bedrooms are equipped with colour televisions, shaver points and tea/coffee making facilities.

Departure Date	No of Days	Hotel	Theme	Holiday Price	Single Supp.
Mon 3rd Feb	5	Palace	Cosy Break	£245	Nil
Mon 6th Apr	5	Cambria		£229	Nil
Mon 27th Apr	5	Cambria	-	£239	Nil
Mon 11th May	5	Queens	-	£279	Nil
Sat 16th May	8	Cambria		£369	Nil
Fri 29th May	5	Marine	-	£309	Nil
Sat 27th Jun	8	Cambria	-	£379	Nil
Sun 5th Jul	5	Cambria	-	£269	Nil
Fri 10th Jul	8	Queens	-	£489	Nil
Mon 28th Sep	5	Cambria		£259	Nil
Mon 12th Oct	5	Queens	-	£279	Nil
Mon 2nd Nov	5	Palace	Turkey & Tinsel	£315	Nil
Mon 30th Nov	5	Queens	Turkey & Tinsel	£285	Nil

Devon Torquay



from
£209

Situated in a beautiful spot in South Devon, Torquay is often referred to as the 'English Riviera' due to its mild climate and the tropical feel to the resort. Nestling between the picturesque hills is the extremely pretty harbour, and it is here where many of the hotels are located. One of the south's premier resorts, there is always something to occupy in Torquay, with an excellent array of shops, parks and theatres, not to mention the beautiful, bustling harbour.

The Headland Hotel

One of Torbay's highest rated three star hotels, the elegant Headland Hotel belongs to the Providence Hospitality group and is situated in one of the most beautiful parts of Torquay on the English Riviera. Sitting majestically on the headland looking out to sea, it is set in two acres of magnificent grounds and offers stunning views across Torbay with numerous coastal walks nearby. Most bedrooms are accessible via the lift and are tastefully decorated with direct dial telephone, television and beverage facilities. The hotel also offers free wi-fi, outdoor heated swimming pool, sauna/multi gym, two spacious lounge bars, spacious restaurant, large dance floor, lift to most floors and quality entertainment every evening.



Departure Date	No of Days	Hotel	Theme	Holiday Price	Single Supp.	Sea View
Mon 17th Feb	5	Belgrave Sands	Cosy Break	£269	Nil	N/A
Mon 23rd Mar	5	Metropole	Spring Breakaway Half Price Bar Deal	£209	Nil	£20
Mon 6th Apr	5	Belgrave Sands	-	£319	Nil	N/A
Mon 4th May	5	Headland	-	£299	Nil	Nil
Mon 3rd Aug	5	Headland	-	£339	Nil	Nil
Sun 27th Sep	7	Metropole	-	£289	£60	£48
Mon 16th Nov	5	Belgrave Sands	Turkey & Tinsel	£329	Nil	N/A
Mon 14th Dec	5	Headland	Turkey & Tinsel	£289	Nil	Nil

Price Includes:

- Half Board Accommodation
Cosy break includes tea/coffee and biscuits on arrival, bingo or quiz one afternoon with tea/coffee and biscuits plus live cabaret each evening. Spring Breakaway includes one lunch plus complimentary pre dinner drink.
- Excursions to Brixham and Newton Abbott
(Itinerary may be subject to change on themed breaks)

Devon **Torquay**



Belgrave Sands Hotel & Spa

Newly opened for the 2017 season, the Belgrave Sands is ideally located just 150 yards from the beach and a short, level walk to the town, harbour and theatre. Each of the elegant bedrooms is equipped en-suite bathroom with walk-in shower, large flat screen TV, digital safe, mini fridge, hairdryer plus complimentary tea and coffee making facilities. In the restaurant all dishes are prepared entirely in house with the finest of seasonal produce to make your dining experience one to remember. There is lift access to most rooms, free wi-fi as well as use of the spa and leisure facilities (extra charges may apply).



Metropole Hotel

Situated in the heart of Torquay just a five minute walk from the beach, the Metropole Hotel offers a conveniently located base to explore beautiful Torquay. All guest bedrooms are traditionally furnished and equipped with en-suite bathrooms, Freeview TV, and tea and coffee making facilities, some featuring large balconies and sea views. The hotel also features two large entertainments rooms and provides a variety of evening entertainment on a regular basis.



Devon **Babbacombe**



from
£189

Ideally located to enjoy all the delights of the English Riviera, beautiful Babbacombe Promenade offers stunning views across Lyme Bay and Portland Bill. The St Marychurch shopping precinct is home to a quaint and varied selection of shops, bars and cafes whilst other visitor attractions include Babbacombe Cliff Railway, the famous Model Village and Babbacombe Theatre, not to mention the beautiful beaches and stunning coastal walks offering miles of breathtaking scenery and wildlife.

Hotel De La Mer

Ideally located at the St Marychurch end of Babbacombe Road, the family run Hotel de la mer offers a warm and friendly welcome. The De la Mer prides itself on its service and offers 27 en-suite bedrooms, all of which are equipped with central heating, tea making facilities, hair dryer, digital TV and radio. There is a licensed fully stocked bar, large dance floor and regular entertainment. The chefs at the hotel are passionate about using fresh local produce which is served in the bright, comfortably furnished dining room by friendly staff. (No lift at this hotel).



Departure Date	No of Days	Theme	Holiday Price	Single Supp.
Tues 18th Feb	5	Winter Cruise Break	£189	Nil
Fri 10th Apr	5	Easter Break	£259	Nil
Thurs 14th May	5	-	£259	Nil
Sun 7th June	7	-	£355	Nil
Wed 9th Sept	6	-	£299	Nil
Fri 30th Oct	5	-	£259	Nil

Price Includes:

- Half Board Accommodation
- Excursions to Sidmouth, Teignmouth and Newton Abbott

Devon **Exmouth**



from
£239

With golden sands, colourful gardens and a bustling harbour, Exmouth has been a popular tourist destination since Georgian times. A range of activities are available along its two miles of promenade including amusements, boating and crazy golf plus dancing and entertainment in the Exmouth Pavilion. The town itself offers excellent shopping facilities including an indoor market and a wide variety of Georgian pubs and quality restaurants serving exceptional local produce. Other attractions include the Country Life Centre, a model railway and boat rides along the estuary.

Cavendish Hotel

Ideally situated on Exmouth's level seafront, close to the golden sandy beach and just a few minutes walk from the shops, the Cavendish Hotel offers pleasant lounges, games room, bar lounge with dance floor and entertainment most evening and a lift to most rooms. All of the 76 bedrooms have central heating and en-suite bathroom plus hairdryer, TV with radio channels and tea/coffee making facilities.



Departure Date	No of Days	Theme	Board Basis	Holiday Price	Single Supp.	Sea View
Wed 22nd Apr	5	Spring Breakaway	Half Board + 1 lunch	£249	£28	£20
Sat 15th Aug	5	-	Half Board	£299	£40	£32
Sun 4th Oct	7	Autumn Breakaway	Half Board + 1 lunch	£319	£42	£30
Mon 9th Nov	5	Turkey & Tinsel	Half Board + 2 lunches	£239	£28	£20

Price Includes:

- Accommodation as specified
- Excursions to Sidmouth, Teignmouth and Dawlish

North Devon **Ilfracombe**



only
£319

With a mild climate and stunning scenery, Ilfracombe is the premier resort in North Devon. A unique and unusual resort, it is the oldest holiday destination in this region, nestling amongst small hills and cliffs surrounding the picture perfect harbour. The harbour was built in the fourteenth century to accommodate a small fishing fleet but the town came to prominence as a holiday resort in the middle of the nineteenth century when the Victorians cherished its natural beauty. The famous Tunnels beaches are close to the hotel, the tunnels cut into the rock to allow access to the beaches in the 1820s by a group of Welsh miners. The town centre provides excellent shopping with a mix of well known stores and many antique and gift shops along the narrow backstreets. Ilfracombe has some delightful parks and gardens, a Victorian bandstand plus stunning coastal walks. Why not take a boat trip to magical Lundy Island, uniquely peaceful and unspoiled.

Imperial Hotel

With arguably one of the best positions in Ilfracombe, the Imperial Hotel is close to the Tunnels Beaches and shops, and a short walk from the harbour opposite the splendid Landmark Theatre and conference centre. This three star hotel boasts extensive lounge areas including television lounge and sun lounge, attractive cosy bar and entertainment with dance floor and entertainment most evenings. The lift serves most rooms (a few additional stairs to some rooms), there is free wi-fi in public rooms and central heating throughout. All of the 104 bedrooms are equipped with bath or shower and wc, tea/coffee making facilities, internal telephone, hairdryer and TV with radio channels.



Departure Date	No of Days	Board Basis	Holiday Price	Single Supp.	Sea View
Sun 31st May	7	Half Board	£319	£60	£48
Sun 26th Jul	7	Half Board	£345	£60	£48

Price Includes:

- Excursions to Barnstaple, Bideford and Woolacombe

Wales **Porthcawl**



from
£199

Just a short drive from the beautiful cities of Swansea and Cardiff, Porthcawl lies on a beautiful stretch of coast with sandy beaches and rocky cliffs, an appealing combination of countryside and seaside that is filled with, and surrounded by attractions for the whole family. Porthcawl was originally a port for the iron and steel industries and still retains some interesting features from this period. In the late nineteenth century it was transformed into an attractive seaside resort. Now, famous for its many golf courses, a rocky promontory with spectacular sea views separates the Royal Porthcawl golf course from the main part of the town including the harbour and expansive sandy beaches, two of which have been awarded blue flags for excellence. Just a short walk from the hotel, the town centre has an attractive high street with a variety of shops whilst the striking Grand Pavilion offers a wide variety of top class entertainment including theatre, comedy, variety and musicals.

Seabank Hotel

Magnificently located on the seafront with outstanding views from all public rooms and many of the bedrooms, this landmark building commands coastal views to the east, south and west, yet is only a short walk from the centre of Porthcawl. The three star Seabank Hotel boasts 89 bedrooms, all of which are equipped with tea/coffee making facilities, internal telephone, hairdryer and TV with radio channels. All bedrooms have bath or shower and WC and most have a trouser press. Facilities at the Seabank include attractive ground floor restaurant, spacious split level cocktail bar lounge, air conditioned entertainment suite complete with bar, dance floor and entertainment most evenings plus a further two small lounges with sea views. There is free wi-fi in public areas and the lift provides level access to most bedrooms (few stairs to some front rooms).

Departure Date	No of Days	Theme	Board Basis	Holiday Price	Single Supp.	Sea View
Mon 9th Mar	5	Spring Breakaway/Half Price Bar Deal	Half Board + 1 lunch	£199	Nil	£20
Mon 2nd Nov	5	Turkey & Tinsel	Half Board + 2 lunches	£239	£28	£20

Price Includes:

- Accommodation as specified (Spring Breakaways also include complimentary glass of wine, beer or a soft drink with dinner each evening)
- Excursions to Swansea and Cardiff

Wales Criccieth



Criccieth lies on the South side of the Llyn Peninsula with splendid views over Cardigan Bay. It is home to a medieval castle built by the Welsh in the mid-thirteenth century. The castle headland divides the town into two with a pebbly beach to the West and a lovely sheltered mainly sandy beach to the East. The countryside around Criccieth is breathtaking with fabulous coastal views over Cardigan Bay.

George IV Hotel

Situated on the High Street in the centre of Criccieth with magnificent views towards the sea and castle. This iconic hotel is in an ideal location, it is a popular choice with its extensive public areas including a delightful intimate bar, attractive large restaurant, entertainment room with additional bar and a cosy lounge. The hotel has 79 bedrooms with a lift serving all principal floors. All bedrooms are en-suite have tv, tea/coffee making facilities and hairdryer.



Departure Date	No of Days	Theme	Itinerary	Holiday Price	Single Supp.	Castle View
Wed 25th Mar	5	Spring Breakaway/ Half Price Bar Deal	HB + 1 lunch	£205	Nil	£20
Wed 10th Jun	5	-	HB	£255	£40	£32
Fri 2nd Oct	4	-	HB	£179	£21	£15
Mon 16th Nov	5	Turkey & Tinsel	HB + 2 Lunches	£219	£28	£20

Price Includes:

- Accommodation as specified (Spring Breakaway also includes a pre dinner drink each evening)
- Excursions to Bala and Barmouth (4 days) plus Blaenau Ffestniog and Porthmadog

(Board Basis may be subject to change on themed breaks)

Wales Tenby



Probably the most iconic, quaint and charming seaside town in Wales, Tenby was awarded a bronze award for the best UK coastal resort at the British Travel Awards in 2013. The original town of Tenby was called 'Dinbych y Pysgod' in Welsh or 'little town of fishes' and was established by the Normans as a fortified town. Most of the old town walls still remain today and, with the narrow cobbled streets and medieval houses serve only to add to Tenby's charm. The town became a popular seaside resort during Georgian and Victorian times. Today the centre of Tenby is a maze of narrow little streets brimming with quirky shops, bars and restaurants. Attractions include the three great beaches, each with its own character and all facing a different direction, Tenby Museum and Art Gallery on Castle Hill, the oldest independent museum in Wales and the National Trust owned Tudor Merchants House. There are also two golf courses plus numerous water sports including mackerel fishing trips.

Clarence House Hotel

Established in 1938, the Grade II listed Clarence House Hotel has been under the personal supervision of the Phillips family for over seventy years. The hotel is superbly situated in the centre of the Esplanade enjoying panoramic views of the South Shore, St. Catherine's Island, Castle Beach, Caldey Island, South Beach and Giltar Point. Facilities at the Clarence House include a quiet lounge, Seagull Bar, the tranquil Rose Garden and Caldey View Terrace, the ideal spot to watch the world sail by. The comfortable dining room offers a choice of home cooked cuisine and there is entertainment most evenings. There is a lift to all floors and all 76 bedrooms are en-suite with colour TV and tea/coffee making facilities. Many bedrooms have either sea front views or look out over the walled garden to the rear of the hotel. The hotel also offers 'Happy Hours' daily from 12 – 2pm, 5pm – 6pm and 8pm – 9pm (Residents-only Bar from 7pm).

Departure Date	No of Days	Theme	Holiday Price	Single Supp.
Mon 16th Mar	5	-	£239	Nil
Mon 11th May	5	-	£295	Nil
Sun 19th Jul	6	-	£379	Nil
Sun 16th Aug	6	-	£389	Nil
Mon 28th Sep	5	-	£299	Nil
Mon 19th Oct	5	-	£269	Nil
Mon 9th Nov	5	Turkey & Tinsel	£269	Nil

Price Includes:

- Half Board Accommodation
- Excursions to St. Davids, Haverford West and Saundersfoot (5 days) plus Carmarthen (6 days)

Wales Llandudno



from
£139

Uniquely situated on a rugged coastline between the Great and Little Ormes and overlooking the Irish Sea, Llandudno lies at the foot of Snowdonia National Park and is the largest resort in Wales. Boasting two beaches, the award winning shingle North Shore and the quiet sand-duned West Shore, Llandudno has become known as the 'Queen of the Welsh Resorts' having retained it's Victorian elegance with an immaculate seafront and carefully preserved architecture. The Grade II listed pier offers an array of attractions including shops, cafes and amusements. Enjoy a ride on the Llandudno cable car rising 679 feet up to the summit of the Great Orme and take in the spectacular panoramic view of the bay and out towards the Conwy Estuary. One of Wales' premier shopping destinations, you'll find a mix of modern malls and delightful speciality shops in and around it's canopied streets as well as award winning restaurants and tea rooms.



Evans Hotel

A warm welcome awaits at the friendly, family run Evans Hotel. Located in a quiet position and on the level, the hotel is just a short stroll from the town centre and just 400 yards from the Promenade and all it's attractions. There is a lift to all floors and all bedrooms are equipped with modern en-suite facilities, hairdryer, flat screen digital freeview TV and complimentary tea, coffee and hot chocolate making facilities. The tastefully furnished dining room is complemented by a friendly service and excellent food freshly prepared each day. Entertainment at the Evans is regular and varied, or alternatively relax in the quiet lounge or fully equipped games/snooker room. Wi-fi is available in parts of the hotel and there is central heating throughout.

Price Includes:

- Half Board accommodation (Christmas and New Year – Full festive programme)
- Excursions : Itinerary 1 - Snowdonia and Anglesey
Itinerary 2 - Caernarfon and Snowdonia
Itinerary 3 - Anglesey & Beaumaris, Snowdonia & Caernarfon

Please note there will be no excursions on 3 & 4 day breaks to allow free time in Llandudno

Theme breaks which include:

Special Bar - Half price drinks nightly between 8.00 pm and 10.30 pm (house brands only)

Extravaganza - The resort is taken back to the Victorian era with period costumes, vintage vehicle rallies and street parades

Around the World - Take a journey around the world with the Evans Hotel

Llandudno & Chester - A chance to experience Wales on a weekend break with a visit to Chester

Christmas Fayre - One of the largest Christmas markets in Wales

(Itinerary may be subject to change on themed breaks)

Departure Date	No of Days	Theme	Itinerary	Holiday Price	Single Supp.
Mon 3rd Feb	5	Special Bar	1	£175	Nil
Fri 14th Feb	4	Reunion tour with Special Bar & optional Charity Package	-	£139	Nil
Mon 9th Mar	5	Special Bar	2	£199	Nil
Fri 20th Mar	3	Llandudno & Chester	-	£159	Nil
Thurs 9th April	5	Easter	1	£235	Nil
Sun 19th April	5	-	2	£235	Nil
Fri 8th May	4	Victorian Extravaganza	-	£209	Nil
Mon 11th May	5	-	2	£249	Nil
Thurs 4th Jun	5	-	2	£269	Nil
Sun 14th Jun	8	-	3	£409	Nil
Thurs 25th Jun	5	-	2	£269	Nil
Sun 5th Jul	6	-	2	£329	Nil
Fri 24th Jul	5	Llandudno	1	£269	Nil
Mon 10th Aug	5	Llandudno	2	£289	Nil
Mon 31st Aug	5	-	1	£285	Nil
Mon 21st Sep	5	-	2	£269	Nil
Fri 25th Sep	3	Llandudno & Chester	-	£139	Nil
Mon 26th Oct	5	Turkey & Tinsel	1	£265	Nil
Fri 6th Nov	4	Fireworks & Remembrance Sunday	-	£199	Nil
Sun 22nd Nov	5	Turkey & Tinsel	2	£269	Nil
Fri 4th Dec	4	Llandudno & Cheshire Oaks	-	£209	Nil
Fri 11th Dec	5	Festive Special		£215	
Wed 23rd Dec	5	Christmas	TBA	£439	Nil
Tues 29th Dec	5	New Year	TBA	£409	Nil

Scotland **Troon**



from
£289

Ayrshire is situated on the west coast of Scotland and is characterized by striking contrasts, offering rolling green hills, a varied coastline and picturesque beaches. A beautiful seaside town located to the north of Ayr with stunning views across to the Isle of Arran and Ailsa Craig, Troon is a charming destination and a popular holiday resort with a variety of facilities on the Esplanade. Curved into a bay, Troon beach is a long sweeping stretch of sand whilst the bustling harbour is home to Ayrshire's fish market and the Yacht Haven, one of the Clydes leading sailing centres. Troon could well be described as a golfers paradise, boasting an amazing seven golf courses including Royal Troon which regularly hosts the famous Open Championship.

South Beach Hotel

Ideally located directly facing the sea and famed for its friendly atmosphere, the superb family owned South Beach Hotel has 34 bedrooms, all of which are en-suite fully equipped with colour TV, radio and tea making facilities, some having stunning sea views. Adjacent to the conservatory, the main restaurant offers the very best of both Scottish and continental cuisine using the finest local produce.

In addition to the popular Millers Bar, the South Beach has an attractive lounge bar offering an outstanding lunch and supper menu whilst the superb residents lounge offers quiet relaxation (No lift at this hotel)



Departure Date	No of Days	Holiday Price	Single Supp.
Mon 8th Jun	5	£289	£60
Mon 7th Sep	5	£289	£60

Price Includes:

- Half Board Accommodation
- Excursions to Loch Lomond, Largs and Ayr

Scotland **Dunoon**



from
£189

Dunoon is splendidly situated on the western shores of the Firth of Clyde, where Loch Long and Holy Loch join the sea. It boasts some lovely gardens, two bays and a flat promenade. Within just a few miles is some of Scotland's most spectacular mountain scenery in the Argyll Forest Park. The journeys along Loch Eck and to Colintraive are amongst the most memorable.

Selborne Hotel

Superbly situated looking South across the Clyde with pleasant lawns reaching down to the promenade and water's edge. All the public rooms and many of the bedrooms offer uninterrupted views of the river which is a constant source of interest. Ground floor areas include a lounge, bar lounge with dance floor, quiet lounge and games room.



Departure Date	Theme	No of Days	Holiday Price	Single Supp.	Estuary View
Mon 30th Mar	Spring Breakaway /Half Price Bar Deal	5	£189	NIL	£20
Mon 6th Jul	-	5	£280	£40	£20

Price Includes:

- Half Board Accommodation (Spring breakaway includes 1 lunch and complimentary pre dinner drink)
- Excursions to Inveraray and Loch Lomond

Isle of Wight



from
£229

Located in the English Channel, the Isle of Wight is separated from the mainland by the Solent and offers superb sandy beaches, stunning countryside and exhilarating coastal walks. The island has several resorts which have been holiday destinations since Victorian times.

A firm family favourite, Sandown is the largest resort on the Isle of Wight and remains the island's principal resort offering a wealth of entertainment. Set around a sheltered bay of golden sandy beaches that stretch three miles to neighbouring Shanklin, other attractions include the Pier, which is right in front of our hotel, Browns Pleasure Park and the award winning Big Cat Sanctuary as well as the many shops, cafes and restaurants.

Shanklin is beautifully situated on the cliffs bordering the south east coast of the island and is sheltered to the west by high lying downs. The town is split, the old village at the top of the cliff and the new village close to the sea being connected by a cliff lift. A town of great character and charm, Shanklin offers many interesting small shops, amusements, restaurants and pubs. Shanklin Old Village is a perennial attraction where most of the picturesque cottages are clustered around the thatched 'Crab Inn'. Within walking distance is Shanklin's famous Chine, a dramatic fissure in the rock where a 45ft waterfall cascades down to the shore.

Bayshore Hotel, Sandown

Situated in a magnificent position on the seafront, opposite the beach and pier and close to the shopping centre. The hotel boasts a large dance floor with entertainment most evenings, cocktail bar and restaurant overlooking the sea, TV lounge, sun lounge and games room. There is free wi-fi in the public areas and a lift serves most rooms although all floors are split level. The 80 bedrooms all have en-suite bath or shower and wc, central heating, tea/coffee making facilities, hairdryer and TV with radio channels.

Shanklin Hotel, Shanklin

One of the best known hotels on the Isle of Wight, the Shanklin is situated in Shanklin town with superb views from the magnificent 'Starlite' restaurant and many of the bedrooms. Shanklin Old Village is a few minutes walk away and the beach is easily accessible via the nearby cliff lift. Facilities at the Hotel include a splendid bar, spectacular restaurant with dancefloor, entertainment most evenings, indoor swimming pool, whirlpool and sauna, games room and indoor bowls area. There is free wi-fi in public areas and the lift serves almost all bedrooms. All of the 89 bedrooms have central heating and en-suite bath or shower and WC, tea/coffee making facilities, telephone, hairdryer and TV.

Departure Date	No of Days	Hotel	Theme	Itin.	Holiday Price	Single Supp.	Sea View
Sun 24th May	7	Bayshore	-	2	£385	£60	£48
Sun 19th Jul	7	Shanklin	-	1	£439	£60	£48
Sun 16th Aug	7	Shanklin	-	1	£439	£60	£48
Sun 20th Sep	7	Bayshore	-	2	£349	£60	£48
Mon 26th Oct	5	Bayshore	Autumn Breakaway	2	£229	£28	£20

Price Includes:

- Half Board Accommodation (Autumn Breakaway 26th Oct includes one lunch)
- Excursions:
 - Itinerary 1**
Newport Market, Godshill, Sandown, Alum Bay and the Needles
 - Itinerary 2**
Newport Market, Godshill, Shanklin, Alum Bay and the Needles

(Itinerary may be subject to change on themed breaks)



Bayshore Hotel



Shanklin Hotel

Jersey by Air **St. Helier**



A beautiful island with a relaxed, friendly lifestyle, Jersey's magical appeal has charmed its visitors for many years. Rich in heritage, there are constant reminders of its colourful history. Just 14 miles from the French coast, it has a continental feel while still being part of Britain. The scenery alone sets Jersey apart from other holiday destinations. From the sandy bays of the south to the rocky cliffs of the north; the narrow country lanes that take you through charming villages to the duty free shops in the bustling heart of St. Helier, there is always something to occupy and entertain.

The Mayfair Hotel

The Mayfair is part of the Modern Hotel Group and is the perfect setting for all age groups. Conveniently located in St. Helier and just a fifteen minute walk from the beach, there's no wonder this three star hotel is a popular hotel in the Jersey capital. The hotel reception is the ideal place to meet friends and meet your Hotel Representative who's on hand to let you know about all the exciting things to do in Jersey. All bedrooms at the Mayfair are en-suite with flat screen TV, direct dial telephone, hairdryer, tea/coffee making facilities and 24 hour room service menu. There are a wealth of facilities on offer including the newly refurbished Sun Terrace, games room with a selection of arcade machines and pool table, heated indoor swimming pool, Jacuzzi and steam room, fully equipped gymnasium with some 21 independent exercise machine, lounge bar open throughout the day and lounge bar offering an extensive selection of drinks as well as tea, coffee and light bar snacks. There is a packed schedule of evening entertainment available at the Mayfair plus free wi-fi in the residents lounge and bar area. The hotel also has a lift and coffee shop.

Departure Date	No of Days	Holiday Price	Single Supp.
Sat 12th Sep	8	£675	£175

Price Includes:

- Transfers to/from local airport
- Door to door pick up service in Barnsley area
- Return flights to Jersey
- Resort transfers
- Half Board accommodation
- Island Tour

IMPORTANT - This holiday is protected under ATOL No. 0752 (Modern Holidays) for whom K.M. Motors Limited act as agents. This holiday is subject to an individual cancellation scale (ask for details)
DEPOSIT - A deposit of £130.00 per person is required for flight holidays arranged by Modern Holidays whose terms and conditions apply.
BALANCE - The balance is payable 60 days prior to departure

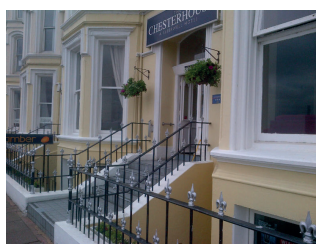
Isle of Man



Famed for its friendliness and laid-back warmth, don't be fooled by the size of the Isle of Man. Just 33 miles long and 13 miles wide, this tiny island has a rich past steeped in myths and legends and is home to an unusual variety of attractions; ancient fortresses, a working Victorian Railway, seas full of wrecks, fields full of rare orchids, the world's largest water wheel and of course, world class road racing events. The island also has its own parliament, laws, traditions, its own postage stamps, currency and Manx language, although English is the spoken language and sterling is accepted throughout. Douglas, the island's capital is the ideal spot from which to explore. It has a Victorian Promenade which overlooks the stunning crescent of Douglas Bay and there is plenty to occupy here including a busy harbour, shops, bars, cafes plus many historical buildings and the Douglas Horse Tram which runs along the seafront.

Chesterhouse Hotel

Ideally located on the seafront in Douglas and close to the town centre, facilities at the Chesterhouse Hotel include a lift, entertainment Amber Bar and Lounge plus the 'Shiraz' restaurant serving an excellent menu of traditional dishes whilst offering splendid panoramic views across the bay to the Irish Sea. There are 67 bedrooms, all of which are en-suite with TV, telephone and tea making facilities.



Departure Date	No of Days	Holiday Price	Single Supp.
Tues 16th Jun	6	£439	£62.50

Sea View Supplement - £75.00 per room (subject to availability)

Price Includes:

- Five nights half board accommodation
- Excursions - This tour will include one full day and two half day excursions around the island.

Important Customer Information

Room Allocation

Every effort will be made to provide precisely the kind of room you have booked and will endeavour to convey special requests to hoteliers. We must stress that we cannot guarantee any requests that are made.

Seat Allocation

Requests for particular seats can be made when booking. Whilst everything possible is done to confirm seating plans shown and to provide the seat numbers booked by clients in the positions indicated and published seating plans, we reserve the right to change should conditions necessitate and we cannot accept bookings conditional on the provision of specific seats.

Pick Up Points (within a limited area)

On our tours we offer a door to door service at a small charge. However this service is operated at our discretion and we reserve the right not to provide the service in the advent of excessive baggage or unreasonable demands being made of ourselves which would make this service uneconomical or impractical to run (please ask for details).

Special Diets

If you require a special diet you must inform us at least 4 weeks prior to your departure with a copy of that diet. This will be notified to the hotel of your particular holiday and any extra costs incurred must be paid to the hotel by yourself before departure from the hotel. We cannot guarantee hoteliers compliance with dietary requests.

Single Rooms

On any holiday there are only a limited number of single rooms. When a single room is available it may be subject to a supplementary charge and this will be shown on the brochure page.

Luggage

Please note that due to space limitations onboard the coach, the vehicle operating 'Door to Door' service and because of Health and Safety Regulations relating to our employees, you are asked to keep luggage to one medium sized suitcase per person together with hand luggage which can be stored safely under your seat on the coach. The only exception to this is when travelling on tours which require an overnight stay en-route to your holiday destination.

Passports

Photographic identification is required for travel to Jersey (eg passport or photographic driving licence)

Local Conditions

During local and national holidays and on certain days of the week, facilities such as theatres, art galleries, museums and shops may be closed. When travelling at the beginning or the end of the holiday season you may also find that resorts are quieter and that some of the facilities are closed.

Travel Insurance Important Information

HOLIDAY TRAVEL INSURANCE

A client holiday travel insurance scheme is available for all passengers travelling on our holidays which is arranged by Wrightsure Services (Hampshire) Limited and currently underwritten by ETI – International Travel Protection (ERV), the UK branch of Europäische Reiseversicherung AG, who are authorised by the Bundesanstalt für Finanzdienstleistungsaufsicht (BAFIN – www.bafin.de) and approved by the Financial Conduct Authority (FCA – www.fca.org.uk) to undertake insurance business in the UK.

With effect from 1st January 2020, our client holiday travel insurance will be underwritten by Great Lakes Insurance SE (GLISE). Great Lakes Insurance SE is a German insurance company with its headquarters at Königinstrasse 107, 80802 Munich. UK Branch office: Plantation Place, 30 Fenchurch Street, London, EC3M 3AJ, company number SE000083. Great Lakes Insurance SE, UK Branch, is authorised by Bundesanstalt für Finanzdienstleistungsaufsicht and subject to limited regulation by the Financial Conduct Authority and Prudential Regulation Authority, registration number 769884.

Our client holiday travel insurance policies will, from the 1st January 2020, be administered by ERGO Travel Insurance Services Ltd (ETI): Registered in the UK, company number 11091555. Authorised and regulated by the Financial Conduct Authority, register number 805870 and registered office: Plantation Place, 30 Fenchurch Street London, EC3M 3AJ.

Details about the extent of GLISE's and ETI's authorisation and regulation by the Prudential Regulation Authority, and regulation by the Financial Conduct Authority are available upon request.

Wrightsure Services (Hampshire) Ltd which is authorised and regulated by the FCA (their registration number is 311394) and which is permitted to advise on and arrange general insurance contracts. You can check these details online using the Financial Services Register (accessible from <https://register.fca.org.uk>) or by contacting the Financial Conduct Authority Consumer Helpline on 0800 1116768.

Should you wish to take out this travel insurance please include the appropriate premium when booking your holiday.

DEMANDS AND NEEDS

This insurance policy will suit the demands and needs of an individual or group (where applicable) who have no excluded medical condition(s), are travelling in countries included within the policy terms and who wish to insure themselves against unforeseen circumstances/events detailed in the cover section below. Subject to the terms, conditions and maximum specified sums insured.

Cover	Sum Insured	Excess
Cancellation	Up to £1,500	Holidays 3 days duration or less. Nil Excess. Holidays 4 days duration and over £50/£15 in respect of Loss of Deposit claims
Personal Accident -	Up to £15,000 Death and corresponding Benefits £15,000. Death Benefit limited to £7,500 persons aged 66 and over at time of travel	No Excess
Medical Expenses including Repatriation (only applicable to travel outside of the UK)	Up to £2,000,000	£35
UK Additional Travelling Expenses	Up to £1,500	£35
Medical Confinement Benefit	£10 per 24 hours up to £100 UK, £15 per 24 hours up to £450 Channel Islands & Europe	No Excess
Curtailment	Up to £1,500	£35
Personal Property Including Money	Up to £1,500 in all. Single Article Limit £200/Valuables £400 Personal Money Up to £200. Delayed Baggage (after 12 hours) Up to £100	Personal Property & Money £35 Delayed Baggage – Excess 12 hours
Loss of Passport	Up to £200	No Excess
Missed Departure	Up to £100 UK & £300 Europe	No Excess
Travel Delay	Travel Delay up to £60 Cancellation (holiday abandonment) up to £1,500	Travel Delay Excess = 12 hours Holiday abandonment excess as per Cancellation
Personal Liability	Up to £2,000,000	No Excess
Legal Expenses	Up to £25,000	No Excess

IMPORTANT

We will not provide you with advice about the suitability of this product for your individual needs but will be happy to provide you with factual information.

We summarise below the details of the insurance cover provided which also includes 24-hour emergency service from Mayday Assistance Limited. The following is a brief summary of the cover available. Full details of cover and exclusions will be forwarded with your confirmation of booking. In any event you may ask for a specimen copy of the policy wording before booking should you wish to examine this in advance.

SUMMARY OF COVER

PLEASE SEE THE POLICY WORDING FOR FULL DETAILS OF THE COVER, LIMITATIONS AND EXCESSES, A SPECIMEN COPY OF WHICH IS AVAILABLE UPON REQUEST.

Health Conditions

The insurers shall not be liable for claims WHERE AT THE TIME OF TAKING OUT THIS POLICY AND BETWEEN THAT TIME AND YOUR DEPARTURE:

- You are aware of any medical condition or set of circumstances that could reasonably be expected to give rise to a claim (for example the state of health of a Close Relative, Business Associate or any person on whom Your travel plans depend).
- The Insured Person whose medical condition gives rise to a claim:
 - Is receiving, or on a waiting list for, surgery, in-patient treatment or investigations in a hospital, clinic or nursing home.
 - Is travelling against any health requirements stipulated by the carrier, their handling agents or other public transport provider.
 - Is travelling against the advice of a Medical Practitioner or for the purpose of obtaining medical treatment abroad.
 - Has been given a terminal prognosis.

Please note: If you are on medication at the time of travel, your medical condition(s) must be stable and well controlled.

If you are travelling outside of the UK You must notify the Change in Health helpline immediately if a change in health occurs (including any change to medication) between the date this policy is issued and your scheduled date of departure.

Please note this Holiday Travel Insurance Scheme is only available to residents of the United Kingdom.

SIGNIFICANT EXCLUSIONS

RESIDENCY

If you or anyone else named on this policy has not been a resident in the UK for the past 6-months this policy cannot cover you.

In addition to the above the policy also contains the following main exclusions:

- Any costs of repatriation or evacuation as a result of You taking part in any excluded Hazardous Activities and Sports including dangerous expeditions or from an area which is considered by Insurers to be a War Risk or Civil Hazard area.
- Loss of or damage to money and valuables whilst left unattended or in/from luggage in transit.
- Loss of or damage to telecommunications and motor vehicle related equipment and accessories.
- Travel against the advice of the carrier, any other public transport provider, the Foreign Office or the World Health Organisation.
- Any insurance event arising from You being the driver, rider or passenger of a quad bike, all-terrain vehicle or motorcycle when the insured person is not wearing a crash helmet, whether legally required locally or not.

Examples of these and other conditions and exclusions are contained within the policy wording, a specimen copy of which is available upon request. If after purchasing a policy from us should you find it does not meet your requirements you have 14 days from the date of issue or prior to travel, whichever is sooner, to cancel the policy and receive a full refund of your premium.

Protecting your information

We will only use your personal details in line with our Privacy Notice. This can be found on our website or is available in hard copy format upon request and you should read this carefully and contact us immediately if you have any queries. Your personal information includes all of the details you have given us to process your insurance policy (we will not ask for more information than is necessary). We may share your data with Third Parties for the provision and ongoing performance of your insurance policy. Your data may be transferred outside the UK. All of the personal information you supply to us will be handled strictly in accordance with the applicable Data Protection regulations and legislation.

K M Motors Limited are an Appointed Representative of Wrightsure Services (Hampshire) Limited who are authorised and regulated by the FCA (their registration number is 311394) and which is permitted to advise on and arrange general insurance contracts. You can check these details online using the Financial Services Register (accessible from www.fca.org.uk) or by contacting the Financial Conduct Authority Consumer Helpline on 0800 111 6768.

Fair Trading Agreement

Our fair trading agreement and important holiday information sets out clearly and simply the responsibilities which we at KM Motors LTD have to you and you in turn have to us when a contract is made between us. The contract is made when you make a booking and we accept it by written confirmation of the terms set out in this brochure. When signing the booking form for your holiday you will sign on behalf of yourself, and others named in your party, that you have read, understood and have accepted this Fair Trading Agreement and the Important Holiday Information provided in this brochure. Your obligation is to pay the price of the holiday and recognise your liabilities if you wish to alter the holiday or have to make a cancellation. On our part we have the obligation to provide you with the holiday you have booked. Our specification of that holiday and our terms are clearly stated in the brochure. Your contract is entered into with KM MOTORS LTD. This Fair Trading Agreement applies to all holidays sold from this brochure. Your holiday contract is subject to English law and jurisdiction.

Your contract with KM Motors Ltd

1. You Pay a Deposit

British Holidays £30 per person and £130 per person for all Jersey Holidays.

2. You Pay the Balance

The balance of your holiday cost must be paid via the office at which you made your booking not later than 6 weeks before the holiday departure day (8 weeks before on tours to Jersey & 4 weeks before on tours of 4 nights or less duration) if you book within the applicable balance due period you must pay the full holiday cost at the time of booking. If the balance is not paid in time we reserve the right to cancel your holiday, retain your deposit and apply cancellation charges set out in paragraph 4 (if you cancel your holiday)

3. If You Change Your Booking

If you wish to change your booking to another departure date in the 2020 holiday brochure we shall do our utmost to make the changes, provided written notification is received from the person who signed the booking form, not later than the date on which the original holiday cost was due for payment. This must be accompanied by a payment of £10.00 per person to cover administration cost. Any alteration made later than the original balance due date will be treated as a cancellation and will be subject to the cancellation charges set out below.

4. If You Cancel Your Holiday

You may cancel your holiday at any time provided that the cancellation is made by the person signing the booking form, and is communicated in writing to ourselves. As this incurs administration costs we shall retain your deposit and in addition, apply cancellation charges set out below:

More than 42 days	Deposit
28 - 42 days	30%
14 - 27 days	45%
7 - 13 days	60%
1 - 6 days	100%
Departure Day	100%

Note if the reason for cancellation is covered under the terms of an insurance policy, you may be able to reclaim these charges.

5. If You Have a Complaint

If you have a complaint during your holiday, please inform, in the first instance the supplier of the service and then inform our driver/courier, who will do his/her utmost to resolve the problem immediately. If the matter cannot be put right locally, you must complete a report form which is obtained from our driver/courier. Please follow this up within 28 days of your return home by writing to the customer relations officer, KM Motors Ltd, Wilson Grove, Lundwood, Barnsley, South Yorkshire, S71 5JS. It is therefore a condition of this contract that you communicate any problem to the supplier of the services in question and to our driver/courier whilst in resort and obtain a written report if you fail to follow this simple procedure we cannot accept responsibility as we have been deprived of the opportunity to investigate and rectify the problem.

6. Statutory Authorities

This brochure is issued subject to applicable Acts of Parliament and Government Regulations and the company reserves the right to modify itineraries to conform with any request from the competent authorities in the United Kingdom and any other sovereign state through which the tour runs.

7. Conditions of Carriage

When you travel on an aircraft, train or ship the conditions of carriage of that carrier apply and you are subject to National and International conditions which may limit or exclude liability. Your contract made under the terms of this Fair Trading Agreement is subject to English law and jurisdiction. Please note that facilities on board the coach may not be available from time to time through mechanical defect, but be assured that under such circumstances we will do our utmost to ensure that, wherever possible, facilities will be made available again as soon as practical, bearing in mind that we would not wish to interrupt the overall tour itinerary. The Public Service Vehicle (Conduct of Drivers, Conductors of Passengers) Regulations as amended 1990, apply to all coaches throughout any holiday in the UK, in the case of ferries or sea craft being unable to operate owing to inclement weather we will arrange other sea crossings as available.

8. Right of Refusal

We must point out that KM MOTORS LTD reserve the unconditional right to refuse booking or terminate a passenger's holiday in the event of unreasonable conduct which in our opinion is likely to cause distress, damage, danger or annoyance to other customers, employees, property or to any third party. This includes any passenger who fails to advise us of any medical condition or disability in accordance with paragraph 9 (below). If you are prevented from travelling as a result of such termination, our responsibility for your holiday thereupon ceases. Full cancellation charges will apply and we will be under no obligation whatsoever for any refund, compensation or loss you may incur.

9. People with Special Needs

We are keen to plan arrangements for your holiday so that special needs and requests can be accommodated as far as possible. Not all holidays in this brochure may be suitable for you, we want you to enjoy your holiday and will try to help you select an appropriate trip, it is essential that we are contacted prior to you making your booking, in order that special needs can be accommodated as far as possible. Please note requests for special menus/diets may incur an additional charge, which must be paid locally to the hotel concerned. Passengers who require one-to-one assistance must be accompanied by an able bodied person, as our tour managers are unable to offer the assistance of a personal nature which may be required.

10. Other Terms

A. you may not bring a pet or any other animal on a KM Motors Ltd Coach Holiday.

B. you may not play a music or media player on the coach.

C. you are responsible for ensuring that you are at the correct departure point at the correct time, and we cannot be liable for any loss or expense suffered by clients because of their late arrival at any departure point.

D. you must ensure that you have a valid passport or visas (if necessary) and we cannot be liable for any loss or expense suffered if you do not.

E. Although our vehicles have large luggage compartments, we have to adhere to regulations concerning the overall weight of fully laden vehicles. We would, therefore, ask you to restrict your luggage to one medium sized suitcase. It is a condition of travel that any items over and above this are notified to ourselves in writing and this includes collapsible wheelchairs.

Note battery driven chairs or vehicles cannot be accepted

It is your responsibility to make sure your luggage is on board the coach on which you are travelling. Please ensure that any instruction given by our driver/courier, at any time during the holiday, concerning luggage or personal effects are strictly adhered to. We would strongly recommend the holiday insurance offered in this brochure which provides cover in the case of loss or damage.

F. Smoking and the use of electronic cigarettes is not allowed on any KM Motors Ltd coaches. If you ignore this rule and thereby cause inconvenience, distress or disappointment to other passengers, you may be asked to leave the holiday. See paragraph 8 - Right of Refusal.

G. In the event of contact being made with KM Motors Ltd by the passenger on any subject where by the contained information in this brochure is changed or additional information given, for any reason, the passenger must ensure that the information given is confirmed to them in writing. No responsibility will be accepted for any loss, damage or disappointment if this procedure has not been followed.

H. Whilst every effort is made to adhere to stated times, there could be circumstances beyond our control such as weather and traffic conditions that may cause delay.

I. This brochure was accurate at the time of going to print, if we become aware of any changes our procedures are as shown in 'our promise to you' paragraph 3, 'if we change your holiday'.

J. Excursions are included in the price of most holidays and refunds cannot be made for passengers not wishing to go on these excursions.

K. Admission fees to buildings, grounds etc and guided tours are not included unless otherwise stated in the brochure.

11. Holiday Insurance

It is a condition of your contract with KM Motors Ltd that you should take out insurance to cover you in the event of illness, personal injury or death during the course of your holiday.

OUR PROMISE TO YOU

1. We Reserve Your Holiday

Your holiday is confirmed at the time of booking subject to space being available on the holiday of your choice.

2. Your Holiday Price

Our prices are fixed on October 5th 2019 and are shown in the price panels on each page on a per person basis.

The price of your holiday is fully guaranteed and will not be subject to any surcharges. Unless specifically indicated in the holiday description, entrance fees, city guides and optional excursions are not included in the holiday price.

3. If We Change Your Holiday

The contents of this brochure are correct at the time of going to press. We reserve the right to make changes to the information contained in this brochure and will advise you of any changes affecting your holiday where those changes occur prior to booking. The arrangements for holidays in this brochure may require changes after a booking is made. Most of these changes are very minor but where they are significant we will notify you as soon as reasonably possible before your departure date. A 'significant change' is one that involves changing your departure date, resort area, town of departure, reducing the quality of the main hotel. Changing the location of any single overnight hotel does not constitute a 'significant change'. In the event of a 'significant change' you may decide to a) continue with the amended holiday b) accept an alternative holiday which we may offer to you or c) cancel your booking. If you choose (a) or (b) we will pay you compensation on the scale below. If you choose (c) we will refund all monies paid by you and compensate you as shown on the scale below. No other claims for compensation or expenses will be considered.

More than 21 days	Nil
14 - 21 days	£10 per person
0 - 13 days	£15 per person

4. If We Cancel Your Holiday

It is necessary for there to be a minimum number of passengers in order to operate a tour. If the minimum number is not achieved before the balance due date the tour could be cancelled. In certain circumstances, therefore, we may have to cancel your holiday, and if this should occur we will return to you all the money you have paid to us, or offer you a suitable alternative. However we will not cancel your holiday after the date on which the holiday balance was due unless;

1. you have not paid for your holiday in full
2. your holiday is influenced by threat of war, riots, civil strife, terrorist activity, industrial disputes, natural or nuclear disasters, fire, epidemic or health risk, technical problems to transport, closure or congestion of ports or similar event beyond our control. If we cancel your holiday at any time we are liable only for any monies you may have paid to us at the time of cancellation and the compensation payments detailed in paragraph 3.

5. What happens to Complaints

All complaints that are received are thoroughly investigated and customers are kept informed at each stage of the investigation. Sometimes the investigations can take time when awaiting a response from hoteliers. We can normally agree an amicable settlement of the few complaints we receive, if the complaint is found to be genuine. You may of course go to your county court or other suitable court.

6. Responsibility for Your Holiday

We accept responsibility for ensuring that all component parts of your holiday as described in this brochure are supplied to you to a reasonable standard and this includes optional excursions purchased through our employees. If any such part is not provided in the advertised manner, we will pay you reasonable compensation unless the non provision was due to circumstances which we could not predict and which were beyond our control such as adverse weather, road or traffic conditions or the matters referred to in paragraph 4 (2) across.

For all claims other than death or personal injury which result from improper performance of the contract by us in circumstances where you stay for the whole or part of the holiday, our liability is limited to the total cost of the holiday (less any insurance) per person.

You should also be aware that:

A. some hotel amenities (e.g. lifts, swimming pools) require servicing or cleansing and we cannot, therefore guarantee that they are always available. Other factors, such as weather or lack of demand can affect the provision of entertainment or outdoor amenities described in this brochure.

B. some excursion itineraries include the use of ferries and other forms of transport which can be affected by inclement weather and may have to be cancelled or arrangements changed. Wherever possible a suitable alternative excursion will be offered.

7. Personal Injury

(Whilst Participating in Arrangements Made by Us)

K M Motors Ltd has taken all reasonable and proper steps to ensure that proper arrangements have been made for all the holidays which are advertised in this brochure, including optional excursions offered by our employees and that the suppliers of all the services are efficient, safe and reputable. Whilst we have no direct control over the provision of these services to you by suppliers we will pay to our clients the equivalent of such damages as they would be entitled to receive under English Law in an English court for any personal injury to the client including illness or death, caused by the failure to perform or the improper performance of such services by our employees or any of our suppliers contracted or sub-contracted by us to provide any part of the arrangements for your holiday as described in this brochure and where such failure or improper performance is due to the fault of such person. We do not accept responsibility if the failure, death or personal injury is not caused by any fault of ours or of our suppliers or is caused by you or someone not connected with your holiday arrangements, or if the failure, death or personal injury is due to unusual or unforeseen circumstances which even with all due care we or our suppliers could not have anticipated or avoided.

Note We accept responsibility as stated above provided that:

A. All claims for personal injury are notified within 3 months of the return from holiday.

B. The injured client(s) assign to KM Motors Ltd any rights against a supplier or other person or party they may have relating to the claim.

C. They agree to co-operate fully with us should we or our insurers wish to enforce those rights which have been assigned to us to which we are subrogated.

D. Such payment is limited in the case of transport by water or air to a maximum of such sums as would be obtained under the provisions of the appropriate International Conventions. The assignment is necessary to enable us to try and recover from suppliers any compensation we have paid to clients by the fault of those suppliers. If we recover more than such compensation and costs, any excess will be paid to the injured client.

8. Personal Injury

(Unconnected with Arrangements Made by Us)

Where appropriate and subject to our reasonable discretion, we will afford general assistance to clients who through misadventure suffer illness, personal injury or death whilst travelling on a KM Motors Ltd holiday arising out of an activity which does not form part of the advertised itinerary nor part of the excursion offered through the company, and which is the responsibility of a third party. If assistance is provided we will limit any monies paid to £5,000 per booking form and in the event of there being a successful claim against a third party, or there being suitable policy(ies) in force our costs shall be recoverable from the clients concerned.

9. Other Terms

A. Our Delay Policy

In the event of a delay of more than 6 hours to the advertised time on any of our holidays, we will do our best to reduce your discomfort. However, all clients are strongly advised to take out Wightsure Insurance cover offered in this brochure as it contains a comprehensive Delay Protection Plan offering financial compensation for delays extending beyond 12 hours.

B. Holiday Excursions

Sightseeing tours in cities and other places of interest are not included in the price unless specifically mentioned on the tour page, although sightseeing excursions will often be available from your driver/courier at additional cost. Optional excursions will operate subject to a minimum number of passengers wishing to partake.

C. Entertainment

Some of our hotels arrange additional entertainment which could include music, dancing, film shows, bingo etc. The nature and frequency of the entertainment presented is at the discretion of the hotel and therefore not guaranteed and could be withdrawn if there is a lack of demand or insufficient numbers in the hotel

D. Special Requests

We accept these on the understanding that they will be passed onto the hotel. Under no circumstances can we guarantee that such requests will be granted or that the hotel had, or is able to, provide the requested facilities.

Important Note

Compensation payments do not apply to changes caused by reason of war, or threat of war, riots, civil strife, terrorist activity, industrial action, natural or nuclear disasters, fire, technical problems to transport, epidemic or health risk, adverse weather conditions and similar events beyond our control.

This brochure was printed in October 2019

Your contract is with KM Motors LTD
Wilson Grove, Lundwood, Barnsley, South Yorkshire, S71 5JS

For Bookings Contact
52 Market Street, Barnsley, South Yorkshire, S70 1SN
Tel: 01226 245564