

2018 British Coach Holidays

Door to Door Holidays*

*Subject to Area Availability



52 Market Street, Barnsley
01226 245564
www.kmtravelbarnsley.co.uk



Established in 1971, here at KM Motors Limited we pride ourselves on providing quality coach tour holidays at affordable prices. From weekend breaks in Llandudno and Blackpool, to week long stays in Cornwall and the south coast, we offer a range of tours to suit all pockets.

Those of you who have previously travelled with KM already know about the quality of service we provide. A family owned and operated company, we pride ourselves on the high standards offered by our friendly administrative staff and professional drivers, all of whom have many years experience in the coach travel industry. In order to maintain these standards we continually upgrade our fleet with the most modern of vehicles.

Once again for 2018 we will be revisiting many favourite destinations such as Eastbourne and Scarborough as well as brand new tours to Kingussie in the Scottish Highlands, Morecambe and the sure to be popular Thursford Christmas Spectacular. Also following their overwhelming popularity in 2017 we will once again be returning to the Isle of Man and Tenby- be sure to book early to avoid disappointment!

With more than forty years experience in arranging and operating coach holidays, you book with KM safe in the knowledge that you will be travelling with a well-established, reliable operator and, for your peace of mind our Fair Trading Agreement complies fully with the EC directive on package travel. Our promise is to offer a quality of service that is second to none.

Booking your holiday couldn't be easier. We accept all major credit and debit cards so you can just give us a call on 01226 245564 and make your reservation by telephone. Or why not call into our travel office where our friendly staff will be pleased to advise and assist.

On behalf of the entire team here at KM we would like to thank you for your continued support and for choosing our 2018 brochure. We look forward to welcoming you on board!

All prices are per person unless otherwise stated.

KM Tours at a Glance 2018

JANUARY

Date	Destination, Hotel	Days		£	Pg
5th	Blackpool, Manhattan Hotel	4 days	TT	£129	6
15th	Blackpool, Manhattan Hotel	5 days		£139	6
15th	Paignton, Palace Hotel	5 days		£219	18
19th	Blackpool, Manhattan Hotel	4 days	PW	£139	6
22nd	Blackpool, Manhattan Hotel	5 days		£139	6
26th	Blackpool, Manhattan Hotel	3 days	CW	£109	6

FEBRUARY

Date	Destination, Hotel	Days		£	Pg
2nd	Cromer, Hotel de Paris	3 days		£99	11
5th	Llandudno, Evans Hotel	5 days		£169	23
5th	Paignton, Palace Hotel	5 days		£229	18
9th	Blackpool, Manhattan Hotel	4 days		£129	6
12th	Blackpool, Manhattan Hotel	5 days		£145	6
12th	Eastbourne, Hadleigh Hotel	5 days		£185	14
16th	Llandudno, Evans Hotel	3 days		£109	23
16th	Scarborough, Cumberland	4 days	CW	£125	5
19th	Babbacombe, Hotel de la Mer	5 days		£189	20
26th	Blackpool, Manhattan Hotel	5 days		£149	6
26th	Mill Rythe Holiday Village	5 days		£179	15
26th	Torquay, Headland Hotel	5 days		£209	19

MARCH

Date	Destination, Hotel	Days		£	Pg
2nd	Great Yarmouth, New Beach	3 days	CW	£89	10
2nd	Scarborough, Cumberland	3 days	CW	£89	5
5th	Eastbourne, Haddon Hall	5 days		£215	14
5th	Llandudno, Evans Hotel	5 days		£199	23
5th	Cromer, Hotel de Paris	5 days		£185	11
9th	Blackpool, Manhattan Hotel	4 days	MD	£139	6
9th	St. Annes, Ashton Park Hotel	3 days	MD	£155	8
12th	Blackpool, Manhattan Hotel	5 days		£149	6
12th	Paignton, Queens Hotel	5 days		£239	18
12th	Scarborough, Cumberland	5 days		£189	5
19th	Torquay, Belgrave Sands	5 days		£255	19
19th	Porthcawl, Seabank Hotel	5 days		£199	21
23rd	Llandudno, Evans Hotel	3 days		£109	23
23rd	Scarborough, Cumberland Hotel	3 days	CW	£99	5
26th	Looe, Portbryan Hotel	5 days		£249	16
26th	Mill Rythe Holiday Village	5 days		£195	15
26th	Gt Yarmouth, New Beach	5 days		£189	10
26th	Tenby, Clarence House Hotel	5 days		£225	22
30th	Blackpool, Manhattan Hotel	4 days	E	£159	6

APRIL

Date	Destination, Hotel	Days		£	Pg
2nd	Blackpool, Manhattan Hotel	5 days	E	£169	6
2nd	Skegness, Savoy Hotel	5 days	E	£239	5
2nd	Llandudno, Evans Hotel	5 days	E	£225	23
2nd	Isle of Wight, Shanklin	5 days	E	£229	25
9th	Eastbourne, Haddon Hall	5 days		£239	14
9th	Northumberland, Caledonian Hotel	5 days		£239	9
10th	Babbacombe, Hotel de la Mer	5 days		£239	20
13th	Blackpool, Manhattan Hotel	4 days		£159	6
16th	Weymouth, Berkeley Hotel	5 days		£189	13
18th	Exmouth, Cavendish Hotel	5 days		£239	20
21st	Ilfracombe, Imperial Hotel	5 days		£195	21
23rd	Blackpool, Manhattan Hotel	5 days		£169	6
23rd	Southport, Royal Clifton	5 days		£255	7
27th	Blackpool, Manhattan Hotel	4 days		£145	6
29th	Isle of Wight, Bayshore	7 days		£309	25
30th	Torquay, Belgrave Sands	5 days		£289	19
30th	St. Ives, Cottage Hotel	6 days		£275	16

MAY

Date	Destination, Hotel	Days		£	Pg
4th	Blackpool, Manhattan Hotel	4 days	BH	£149	6
4th	Llandudno, Evans Hotel (Extravaganza)	4 days	BH	£199	23
7th	Torquay, Headland Hotel	5 days		£279	19
7th	Eastbourne, Afton Hotel	5 days		£245	14
7th	Blackpool, Manhattan Hotel	5 days		£175	6
7th	St. Annes, Ashton Park Hotel	5 days		£259	8
14th	Llandudno, Evans Hotel	5 days		£235	23
14th	Skegness, Savoy Hotel	5 days		£265	5
14th	Paignton, Queens Hotel	5 days		£269	18
19th	Cromer, Hotel de Paris	5 days		£265	11
21st	Tenby, Clarence House	5 days		£275	22

MAY

Date	Destination, Hotel	Days	£	Pg
23rd	Scarborough, Cumberland	5 days	£245	5
25th	Blackpool, Manhattan Hotel	4 days	£159	6
26th	Babbacombe, Hotel de la Mer	5 days	£259	20
28th	Blackpool, Manhattan Hotel	5 days	£179	6
28th	Eastbourne, Haddon Hall	6 days	£289	14

JUNE

Date	Destination, Hotel	Days	£	Pg
1st	Paignton, Marine Hotel	5 days	£289	18
2nd	Weymouth, Berkeley Hotel	8 days	£379	13
3rd	Isle of Wight, Bayshore	7 days	£345	25
4th	Looe, Portbyhan Hotel	5 days	£349	16
4th	Troon, South Beach Hotel	5 days	£269	24
8th	Blackpool, Manhattan Hotel	4 days	£149	6
11th	Blackpool, Manhattan Hotel	5 days	£185	6
11th	Babbacombe, Hotel de la Mer	6 days	£299	20
11th	Northumberland, Caledonian Hotel	5 days	£249	9
13th	Isle of Man, Chesterhouse Hotel	6 days	£399	26
17th	Llandudno, Evans Hotel	6 days	£309	23
18th	Eastbourne, Afton Hotel	5 days	£259	14
18th	Southport, Royal Clifton	5 days	£265	7
18th	Weston, New Ocean Hotel	5 days	£265	12
22nd	Llandudno, Evans Hotel	4 days	£185	23
23rd	Eastbourne, Haddon Hall	8 days	£435	14
24th	Newquay, Eliot Hotel	7 days	£349	17
25th	Blackpool, Manhattan Hotel	5 days	£189	6
29th	Blackpool, Manhattan Hotel	4 days	£149	6
30th	Porthcawl, Seabank	5 days	£269	21
30th	Gt Yarmouth, New Beach	8 days	£399	10

JULY

Date	Destination, Hotel	Days	£	Pg
1st	Isle of Wight, Bayshore	7 days	£385	25
2nd	St. Annes, Ashton Park Hotel	5 days	£259	8
7th	St. Ives, Cottage Hotel	8 days	£429	16
8th	Llandudno, Evans Hotel	6 days	£315	23
9th	Blackpool, Manhattan Hotel	5 days	£205	6
13th	Blackpool, Manhattan Hotel	4 days	£159	6
13th	Paignton, Queens Hotel	8 days	£459	18
14th	Weymouth, Berkeley Hotel	8 days	£389	13
15th	Ilfracombe, Imperial Hotel	7 days	£339	21
16th	Mill Rythe Holiday Village	5 days	£225	15
22nd	Tenby, Clarence House	7 days	£365	22
22nd	Isle of Wight, Shanklin	7 days	£399	25
23rd	Skegness, Savoy Hotel	5 days	£279	5
23rd	Weston, New Ocean Hotel	5 days	£285	12
27th	Blackpool, Manhattan Hotel	4 days	£159	6
28th	Scarborough, Cumberland	5 days	£259	5
29th	Cromer, Hotel de Paris	7 days	£379	11
30th	Blackpool, Manhattan Hotel	5 days	£205	6
30th	Morecambe, Headland Hotel	5 days	£249	7

AUGUST

Date	Destination, Hotel	Days	£	Pg
3rd	Llandudno, Evans Hotel	3 days	£125	23
4th	Eastbourne, Haddon Hall	8 days	£439	14
4th	St. Ives, Cottage Hotel	8 days	£435	16
6th	Torquay, Headland Hotel	5 days	£319	19
6th	Troon, South Beach Hotel	5 days	£275	24
8th	Weymouth, Russell Hotel	5 days	£299	13
10th	Blackpool, Manhattan Hotel	4 days	£159	6
13th	Blackpool, Manhattan Hotel	5 days	£219	6
13th	St. Annes, Ashton Park Hotel	5 days	£269	8
13th	Lake District, Crown & Mitre Hotel	5 days	£265	9
17th	Newquay, Barrowfield Hotel	5 days	£299	17
18th	Isle of Wight, Shanklin	6 days	£339	25
18th	Eastbourne, Hadleigh Hotel	7 days	£379	14
18th	Ilfracombe, Imperial Hotel	5 days	£259	21
19th	Tenby, Clarence House	7 days	£379	22
19th	Bournemouth, Devon Towers	7 days	£359	13
24th	Blackpool, Manhattan Hotel	4 days	£169	6
24th	Llandudno, Evans Hotel	3 days	£129	23
27th	Blackpool, Manhattan Hotel	5 days	£219	6
27th	Llandudno, Evans Hotel	5 days	£275	23
27th	Mill Rythe Holiday Village	5 days	£225	15
30th	Kingussie, Duke of Gordon Hotel	5 days	£329	24

SEPTEMBER

Date	Destination, Hotel	Days	£	Pg
2nd	Newquay, Eliot Hotel	7 days	£339	17
3rd	Southport, Royal Clifton Hotel	5 days	£265	7
7th	Blackpool, Manhattan Hotel	4 days	£185	6
8th	Scarborough, Cumberland	5 days	£249	5

SEPTEMBER

Date	Destination, Hotel	Days	£	Pg
9th	Weston, Anchor Head Hotel	7 days	£335	12
10th	Blackpool, Manhattan Hotel	5 days	£225	6
10th	Tenby, Clarence House	5 days	£289	22
10th	Weymouth, Berkeley Hotel	5 days	£275	13
15th	Jersey, Mayfair Hotel	8 days	£595	26
16th	Babbacombe, Hotel de la Mer	5 days	£255	20
16th	Gt Yarmouth, New Beach	7 days	£295	10
17th	Llandudno, Evans Hotel	5 days	£255	23
17th	Skegness, Savoy Hotel	5 days	£269	5
21st	Blackpool, Manhattan Hotel	4 days	£185	6
24th	Blackpool, Manhattan Hotel	5 days	£225	6
24th	Eastbourne, Hadleigh Hotel	5 days	£265	14
28th	Llandudno, Evans Hotel	3 days	£125	23
28th	St. Annes, Ashton Park Hotel	3 days	£159	8
30th	Exmouth, Cavendish Hotel	7 days	£299	20

OCTOBER

Date	Destination, Hotel	Days	£	Pg	
1st	Paignton, Marine Hotel	5 days	£269	18	
3rd	Cromer, Hotel de Paris	5 days	£215	11	
4th	Cotswold, Swindon Marriott	5 days	£259	12	
5th	Blackpool, Manhattan Hotel	4 days	£185	6	
8th	Blackpool, Manhattan Hotel	5 days	£225	6	
8th	Mill Rythe Holiday Village	5 days	£219	15	
8th	Northumberland, Caledonian Hotel	5 days	£239	9	
14th	St. Ives, Cottage Hotel	7 days	£279	16	
15th	Eastbourne, Afton Hotel	5 days	£259	14	
15th	Paignton, Queens Hotel	5 days	£259	18	
15th	Scarborough, Cumberland	5 days	£209	5	
19th	Blackpool, Manhattan Hotel	4 days	£185	6	
22nd	Torquay, Belgrave Sands	5 days	£295	19	
22nd	Tenby, Clarence House Hotel	5 days	£249	22	
22nd	Eastbourne, Haddon Hall	5 days	TT	£279	14
22nd	Gt Yarmouth, New Beach	5 days	£195	10	
26th	St. Annes, Ashton Park Hotel	3 days	£159	8	
29th	Llandudno, Evans Hotel	5 days	TT	£249	23
29th	Isle of Wight, Bayshore	5 days	£219	25	
29th	Bournemouth, Devon Towers	5 days	£229	13	
29th	Blackpool, Manhattan Hotel	5 days	£225	6	

NOVEMBER

Date	Destination, Hotel	Days	£	Pg
2nd	Blackpool, Manhattan Hotel	4 days	£179	6
5th	Blackpool, Manhattan Hotel	5 days TT	£215	6
5th	Paignton, Palace Hotel	5 days TT	£295	18
5th	Eastbourne, Hadleigh Hotel	5 days TT	£275	14
5th	Skegness, Savoy Hotel	5 days TT	£249	5
9th	Blackpool, Manhattan Hotel	4 days	£159	6
12th	Exmouth, Cavendish Hotel	5 days TT	£219	20
12th	Tenby, Clarence House	5 days TT	£249	22
12th	Scarborough, Cumberland	5 days TT	£235	5
12th	Isle of Wight, Shanklin	5 days TT	£239	25
16th	Llandudno, Evans Hotel	3 days	£119	23
19th	Blackpool, Manhattan Hotel	5 days TT	£215	6
19th	St. Annes, Ashton Park Hotel	5 days TT	£249	8
19th	Porthcawl, Seabank	5 days TT	£229	21
21st	Babbacombe, Hotel de la Mer	5 days TT	£245	20
26th	Llandudno, Evans Hotel	5 days TT	£249	23
26th	Mill Rythe Holiday Village	5 days TT	£229	15
26th	Torquay, Headland Hotel	5 days TT	£285	19
30th	Blackpool, Manhattan Hotel	4 days TT	£165	6
30th	Cromer, Hotel de Paris (Thursford)	4 days	£239	11

DECEMBER

Date	Destination, Hotel	Days		£	Pg
3rd	Blackpool, Manhattan Hotel	5 days	TT	£219	6
3rd	Paignton, Queens Hotel	5 days	TT	£279	18
7th	Llandudno, Evans Hotel	3 days		£119	23
14th	Blackpool, Manhattan Hotel	4 days	TT	£165	6
17th	Blackpool, Manhattan Hotel	5 days	TT	£209	6
23rd	Blackpool, Manhattan Hotel	5 days	XMAS	£399	6
23rd	Gt Yarmouth, New Beach	5 days	XMAS	£399	10
23rd	Llandudno, Evans Hotel	5 days	XMAS	£409	23
27th	Blackpool, Manhattan Hotel	4 days	TM	£175	6
29th	Eastbourne, Hadleigh Hotel	5 days	NY	£409	14
29th	Eastbourne, Afton Hotel	5 days	NY	£389	14
29th	Llandudno, Evans Hotel	5 days	NY	£385	23
30th	Blackpool, Manhattan Hotel	4 days	NY	£319	6
30th	Scarborough, Cumberland	4 days	NY	£359	5

PW	Pigeon Weekend	CW	Cabaret Weekend
MD	Mothers Day	E	Easter
TT	Turkey & Tinsel	XMAS	Christmas
TM	Twixmas	NY	New Year
BH	Bank Holiday		



Useful Information

Booking

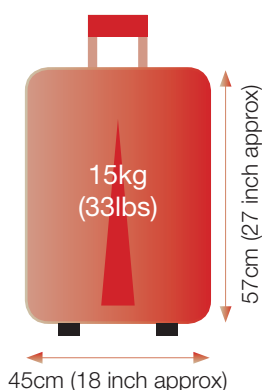
It has never been easier to make a booking with KM Coach Holidays. You are very welcome to call into our Barnsley office where you will be greeted by our friendly well trained staff who will answer any questions and queries. Alternatively just give us a call on: Barnsley 01226 245564

Accessibility

Unfortunately we are no longer able to transport motorised scooters or battery operated wheelchairs. However we are able to transport standard folding wheelchairs and walkers, but due to limited space on board the vehicles we have a limit of two such items. It is essential that we are informed at the time of booking and it is important that passengers check with us the accessibility of the hotel to prevent any problems.

Luggage

Please note that due to space limitations on board the coach, the vehicles operating our 'Door to Door' service and because of Health & Safety Regulations relating to our employees, you are asked to keep luggage to one medium sized suitcase per person together with hand luggage which can be stored safely under your seat on the coach.



Coaches

On the majority of our tours for your peace of mind we use our own drivers and our full executive style coaches with toilet/washroom and drinks facilities on-board. However, on shorter breaks or for events outside our control, we may occasionally use coaches without such facilities.

COACH HOLIDAY INSURANCE

Holiday Duration	UK	Jersey
Up to 3 days	£15.00	-
4 days	£17.50	-
5 days	£19.90	-
6 days	£24.00	-
7 days	£24.50	-
8 days	£25.00	£45.00

(Rates include insurance premium tax at 20%)

For more information about terms and conditions turn to pages 27 & 28.

Remember

If the price of the holiday is reduced prior to departure you will only have to pay the final price.

Watch out for our great value late availability tours which we will advertise in your local press.

Private Groups

We welcome private groups which we are happy to make arrangements for (ask for details).

GIFT VOUCHERS AVAILABLE

The Perfect Gift for Birthdays, Christmas & Anniversaries

Your Financial Security

In order to comply with package tour regulations and to protect clients pre-payments, all monies paid are held in a secure clients account and are controlled by independent persons.

In accordance with EC directives, funds would be available to cover refunds and repatriation in the unlikely event that we should cease to trade, thus giving you complete security and peace of mind.



Contact us for details

from
£89



Yorkshire **Scarborough**

A thriving fishing community located on Yorkshire's stunning coastline, Scarborough is arguably one of England's oldest seaside resorts becoming a holiday destination over 400 years ago when the health properties of the Spa waters were discovered. The undisputed 'Queen of the Yorkshire Coast', the town stands between two splendid bays divided by a rugged headland on which sit the remains of a medieval castle. Scarborough offers a wealth of attractions including theatres, parks, cafes, and a vibrant nightlife. The colourful working harbour is a hive of activity whilst the majestic Victorian promenade sweeps between the bays. There are a wide variety of shops to suit all tastes plus stunning floral gardens, in particular South Cliff and the remarkable Peasolm Park with it's oriental influences.

Cumberland Hotel

Extremely well situated on the South Cliff, the three star Cumberland Hotel is just a few minutes walk from the Spa Complex, beach and town centre and affords excellent views of the town from the north facing rooms. Amenities at the hotel include an attractive restaurant, quiet lounge and bar lounge with large dance floor where entertainment is provided most evenings. The Cumberland boasts 86 bedrooms, all of which are equipped with central heating, bath or shower and WC, tea/coffee making facilities, hairdryer and TV with radio channels. There is free wi-fi in public areas and a lift serves all floors (few additional stairs to some rooms).

Departure Date	No of Days	Theme	Board Basis	Holiday Price	Single Supp.
Fri 16th Feb	4	Cabaret	Half Board	£125	Nil
Fri 2nd Mar	3	Cabaret	Half Board	£89	Nil
Mon 12th Mar	5	Spring Breakaway	HB +1 lunch	£189	Nil
Fri 23rd Mar	3	Cabaret	Half Board	£99	Nil
Wed 23rd May	5	-	Half Board	£245	£36
Sat 28th Jul	5	-	Half Board	£259	£36
Sat 8th Sep	5	-	Half Board	£249	£36
Mon 15th Oct	5	Autumn Breakaway	HB +1 lunch	£209	£28
Mon 12th Nov	5	Turkey & Tinsel	HB +2 lunches	£235	£28
Sun 30th Dec	4	New Year	Full Board	£359	£21

Price Includes:

- Accommodation as specified
(Spring Breakaway also includes a complimentary glass of wine, beer or a soft drink with dinner each evening)
 - Excursions to Whitby and Bridlington (5 days only)
Cabaret Weekends calling en-route at McArthurGlen Designer Outlet, York.
- (Itinerary may be subject to change on themed breaks)

from
£239



Lincolnshire **Skegness**

Perched on the Lincolnshire coast, Skegness is one of the UK's top seaside resorts and has an abundance of attractions that appeal to all ages. Small enough to offer a friendly atmosphere but large enough to provide hours of entertainment for young and old alike, Skegness burst into life in the 1870s with the arrival of the train and soon became the successful seaside town we know today, also giving rise to it's best known icon - the Jolly Fisherman. The largest resort on this coastline, Skegness boasts miles of award winning golden sandy beaches plus great attractions along the promenade and seafront. Just a few of the highlights include Natureland Seal Sanctuary and Animal Centre, crazy golf, ten pin bowling, the pier, amusements, not to mention the beautifully landscaped gardens that are the envy of the east coast. Nightlife in the resort is varied with a wide selection of bars and restaurants plus a great choice of entertainment including exciting shows and cabarets.

Savoy Hotel

Enjoying an excellent Central Promenade location, the Savoy is one of the resort's premier hotels and is an ideal base to explore many local attractions including the wonderful golden beach, the Embassy Theatre and tournament standard bowling greens. One of Skegness' largest hotels, the Savoy offers 48 stylish bedrooms, all furnished to a very high standard and fully equipped with full en-suite facilities, flat screen digital televisions, electric radio/alarm clocks, hairdryers and hot drink selection. One of the most outstanding attractions at the Savoy Hotel is the excellent dining facilities in the beautiful sea front restaurant where experienced chefs have earned an exceptional reputation for providing sumptuous home cooked, traditional food using only the finest of Lincolnshire produce. Enjoy a drink and meet new friends in the contemporary Savoy Lounge and Bar and relax in comfort to live professional entertainment during the holiday season. The lift serves two floors (unfortunately the lift is unable to accommodate a wheelchair with a seated person).

Departure Date	No of Days	Theme	Holiday Price	Single Supp.
Mon 2nd Apr	5	Easter	£239	Nil
Mon 14th May	5	-	£265	Nil
Mon 23rd Jul	5	-	£279	Nil
Mon 17th Sep	5	-	£269	Nil
Mon 5th Nov	5	Turkey & Tinsel	£249	Nil

Price Includes:

- Half Board accommodation
 - Excursion to Boston & Spalding
- (Itinerary may be subject to change on themed breaks)



Lancashire Blackpool

With a vibrant nightlife, world class shows and the UK's most famous theme park, the nation's favourite holiday resort is unrivalled throughout the world for its popularity. Blackpool continues to attract millions of visitors appealing to everyone, both young and old with a wealth of attractions. With miles of golden sandy beaches broken only by the three piers, whether you're looking for frills and excitement, family entertainment, historic gems or beautiful gardens, Blackpool has it all. As well as the new seafront there is a huge range of year round attractions including the award winning zoo, Sandcastle Waterpark, Tower Dungeons, Sealife Centre, atmospheric trams and horsedrawn carriages and of course, the Tower Circus.

Why not take a visit to Stanley Park with its showpiece Italian Gardens and boating lake. Blackpool boasts seemingly endless evening entertainment with splendid theatres including the Grand Theatre, the Winter Gardens and the Tower Ballroom all hosting major international artists and national events.

The Manhattan Hotel

Renowned for its first class service and home cooked meals, the Manhattan Hotel is a friendly, family run hotel run under the personal supervision of its proprietors. Occupying one of the best positions on Blackpool's north promenade, the hotel enjoys magnificent views of the Irish Sea and is just a short distance from Blackpool Tower, the Winter Gardens and the famous Golden Mile. The tastefully decorated restaurant offers an excellent varied menu whilst the lounge bar, overlooking the promenade is the ideal place to meet friends. Each of the 62 bedrooms is tastefully furnished and equipped with en-suite facilities, central heating, hospitality tray and colour TV. The lift serves most bedrooms although some are accessible by a flight of stairs and there is entertainment most evenings.

Price Includes:

- Half Board Accommodation (Cabaret Break 26 Jan also includes Sunday Lunch)
- Excursions - Itin 1 - Skipton, Cleveleys and Freeport
Itin 2 - Southport, Cleveleys and Freeport
Itin 3 - Cleveleys and Freeport

Plus excursion through illuminations during light season

(Itinerary may be subject to change on themed breaks)

Departure Date	No of Days	Theme	Itinerary	Holiday Price	Single Supp.
Fri 5th Jan	4	Post Christmas T&T	3	£129	£15
Mon 15th Jan	5	-	2	£139	£20
Fri 19th Jan	4	Pigeon Fanciers Weekend	3	£139	£15
Mon 22nd Jan	5	-	2	£139	£20
Fri 26th Jan	3	Cabaret Break	3	£109	£10
Fri 9th Feb	4	-	3	£129	£15
Mon 12th Feb	5	-	2	£145	£20
Mon 26th Feb	5	-	2	£149	£20
Fri 9th Mar	4	Mothers Day	3	£139	£15
Mon 12th Mar	5	-	2	£149	£20
Fri 30th Mar	4	Easter Weekend	3	£159	£15
Mon 2nd Apr	5	Easter Week	1	£169	£20
Fri 13th Apr	4	-	3	£159	£15
Mon 23rd Apr	5	-	1	£169	£20
Fri 27th Apr	4	-	3	£145	£15
Fri 4th May	4	Bank Holiday Weekend	3	£149	£15
Mon 7th May	5	-	2	£175	£20
Fri 25th May	4	Bank Holiday Weekend	3	£159	£15
Mon 28th May	5	Spring Bank Holiday	1	£179	£20
Fri 8th Jun	4	-	3	£149	£15
Mon 11th Jun	5	-	2	£185	£20
Mon 25th Jun	5	-	1	£189	£20
Fri 29th Jun	4	-	3	£149	£15
Mon 9th Jul	5	-	2	£205	£20
Fri 13th Jul	4	-	3	£159	£15
Fri 27th Jul	4	-	3	£159	£15
Mon 30th Jul	5	-	1	£205	£20
Fri 10th Aug	4	-	3	£159	£15
Mon 13th Aug	5	-	2	£219	£20
Fri 24th Aug	4	Bank Holiday Weekend	3	£169	£15
Mon 27th Aug	5	-	1	£219	£20
Fri 7th Sep	4	Illuminations	3	£185	£15
Mon 10th Sep	5	Illuminations	1	£225	£20
Fri 21st Sep	4	Illuminations	3	£185	£15
Mon 24th Sep	5	Illuminations	1	£225	£20
Fri 5th Oct	4	Illuminations	3	£185	£15
Mon 8th Oct	5	Illuminations	2	£225	£20
Fri 19th Oct	4	Illuminations	3	£185	£15
Mon 29th Oct	5	Illuminations	2	£225	£20
Fri 2nd Nov	4	Illuminations	3	£179	£15
Mon 5th Nov	5	Turkey & Tinsel	2	£215	£20
Fri 9th Nov	4	Armistice Weekend	3	£159	£15
Mon 19th Nov	5	Turkey & Tinsel	2	£215	£20
Fri 30th Nov	4	Turkey & Tinsel	3	£165	£15
Mon 3rd Dec	5	Turkey & Tinsel	2	£219	£20
Fri 14th Dec	4	Turkey & Tinsel	3	£165	£15
Mon 17th Dec	5	Turkey & Tinsel	2	£209	£20
Sun 23rd Dec*	5	Christmas	TBA	£399	NA*
Thu 27th Dec	4	Twixmas	TBA	£175	£15
Sun 30th Dec*	4	New Year	TBA	£319	NA*

* Single rooms not available



only
£249



Lancashire **Morecambe**

Situated on the edge of the famed Morecambe Bay, with stunning panoramic views across the bay and beyond to the rolling Lakeland hills, Morecambe is once again becoming one of the nation's best loved resorts and the perfect place for a traditional seaside holiday. A multi million pound renovation project has helped return the town to its former popularity and it is now a vibrant, modern resort with miles of level promenade, traditional courtesy and hospitality plus year round entertainment. It can also boast great shopping with an Arndale Centre and the famous 'Festival Market' on the promenade.

Headway Hotel

Ideally located on the broad sweep of Morecambe's east promenade with breathtaking views across the bay, the Headway Hotel offers 54 tastefully furnished bedrooms, all equipped with modern private facilities, colour TV, radio, telephone, tea/coffee making facilities, hairdryer and central heating. The hotel is renowned for high quality cuisine served in the spacious and inviting restaurant, plus there are two lounges where you can relax or enjoy the regular entertainment.



Departure Date	No of Days	Holiday Price	Single Supp.
Mon 30th July	5	£249	Nil

Price Includes:

- Half Board Accommodation
- Excursions to St Annes on Sea and the Lake District



from
£255



Lancashire **Southport**

The classic resort of Southport is the perfect destination for a short break. With over twenty two miles of coastline boasting a number of beautiful beaches and stunning natural beauty, it offers great attractions including superb shopping and a mouthwatering array of restaurants. It is rumoured that Napoleon III re-modelled certain parts of Paris based on his knowledge of Southport during his stay in the town back in the mid nineteenth century. Home to one of the oldest piers in the country, the town is also known as England's golfing capital boasting a total of six championships courses. Add to this a vibrant nightlife, the splendour of Lord Street with its unique range of shops, beautifully scenic parks and gardens and you'll understand why Southport appeals to all ages and interests.

Best Western - Royal Clifton Hotel And Spa

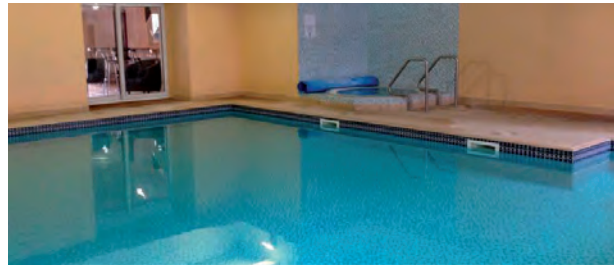
Undoubtedly one of Southport's finest hotels and with an enviable position on the Promenade, the Royal Clifton Hotel is just a short walk from fashionable Lord Street. A traditional Victorian hotel noted for its exceptional range of facilities and excellent standard of service, over recent years the hotel has been thoughtfully refurbished to offer the comfort you expect in the best location in Southport. As well as the pleasant sea views you'll find Kings Gardens right on your doorstep. All bedrooms are en-suite and offer flat screen TV with satellite channels, hospitality tray, free wifi access, hairdryer and telephone. One of the qualities of the hotel is the food choice on offer, the finest local produce served in delightful surroundings. The health and leisure club within the hotel offers a superb heated indoor swimming pool, bubbling Jacuzzi opening on to the private patio garden, a fully equipped gymnasium, poolside sauna and steam room. (Please note there is no entertainment at this hotel)

Departure Date	No of Days	Holiday Price	Single Supp.
Mon 23rd Apr	5	£255	Nil
Mon 18th Jun	5	£265	Nil
Mon 3rd Sep	5	£265	Nil

Price Includes:

- Half Board Accommodation
- Excursions to St. Annes & Barton Grange and Liverpool

(Itinerary may be subject to change on themed breaks)



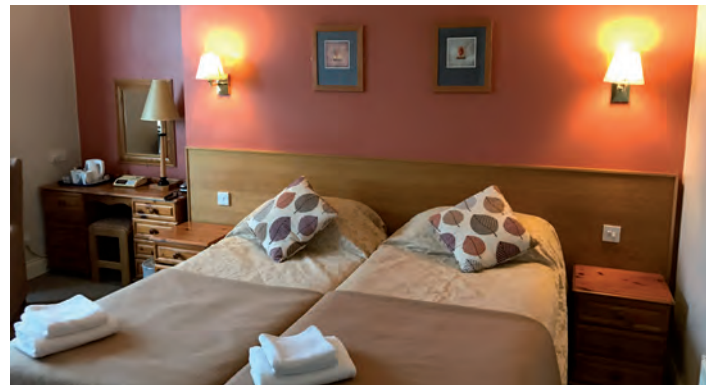
from
£155

Lancashire **St. Annes on Sea**

Just three miles from the bright lights of Blackpool, St. Annes on Sea is worlds apart in both character and atmosphere. Warm and friendly, with a timeless classic style, there is something for all the family. Nestled along a picturesque stretch of coastline lined with well tended lawns, a boating lake and pretty parks, St. Annes on Sea town centre has been completely regenerated over recent years to offer a charming experience. Take a stroll along the promenade and you'll find the beautifully preserved Victorian Pier, originally built in 1885 and now home to amusement rides, shops and a café.

The Ashton Park Hotel

Just a few minutes stroll from the shopping centre and Pier in the heart of St. Annes, the Ashton Park occupies a marvellous position overlooking Ashton Gardens and prides itself on offering first class service, quality and comfort whilst retaining a personal touch and friendly atmosphere. The indoor heated swimming pool, steam room and Jacuzzi are complementary for hotel guests. The hotel also boasts a lift to all floors (a few steps to some rooms), comfortable bar lounge with entertainment most evenings, full central heating and gym. Excellent food is served in the spacious dining room, a selection of the best traditional British dishes using locally sourced, fresh and seasonal produce. All bedrooms are fully equipped with en-suite bathroom, TV, hairdryer and tea/coffee making facilities.

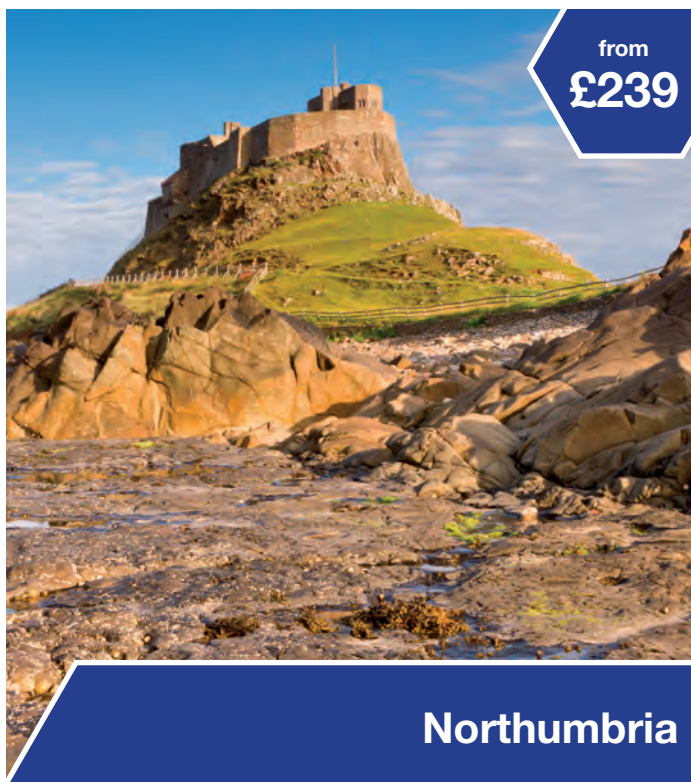


Departure Date	No of Days	Theme	Holiday Price	Single Supp.
Fri 9th Mar	3	Mothers Day Weekend	£155	Nil
Mon 7th May	5	-	£259	Nil
Mon 2nd Jul	5	-	£259	Nil
Mon 13th Aug	5	-	£269	Nil
Fri 28th Sep	3	Illuminations	£159	Nil
Fri 26th Oct	3	Illuminations	£159	Nil
Mon 19th Nov	5	Turkey & Tinsel	£249	Nil

Price Includes:

- Half Board Accommodation (plus Sunday lunch on three day tours)
- Excursions to: Fleetwood Freeport or Blackpool plus illuminations excursion in season (3 day tours)
Cleveleys, Fleetwood Freeport and Southport (5 day tours)

(Itinerary may be subject to change on themed breaks)



Northumbria

Hadrians Wall and Holy Island

With its wild landscapes and dramatic coastline, Northumberland is undoubtedly one of the most beautiful counties in England. Dominated by imposing castles, the enchanting coastline has great sweeps of sandy beaches and sheltered bays interrupted by high jutting cliffs. Hadrian's Wall is one of England's greatest landmarks and leaves a lasting impression on any who visit. It is the best preserved frontier of the Roman Empire and our nation's finest Roman monument. Archaeological sites and museums along the wall tell the story of Rome's rise and fall, not to mention the stunning landscape and views unchanged since Roman times. The delightful unspoiled Holy Island lies just off the extreme northeast corner of England. A tidal island that is accessed by a paved causeway which is covered by the North Sea twice every day, Lindisfarne is famous both for its medieval religious heritage and its more recent picturesque 16th century castle.

Caledonian Hotel

Set in the heart of Jesmond, a chic and leafy area just one mile from Newcastle city centre with a vibrant bar and café culture, the Caledonian is a comfortable, friendly hotel combining Georgian architecture with a contemporary edge. The hotel boasts a small lounge area near the reception and the Billabong Bar and Bistro offers a pleasant atmosphere. The hotel boasts 91 bedrooms, all of which are en-suite with bath or shower, satellite TV, direct dial telephone, hair dryer and tea/coffee making facilities (Please note no entertainment during this tour).

Departure Date	No of Days	Holiday Price	Single Supp.
Mon 9th Apr	5	£239	£60
Mon 11th Jun	5	£249	£60
Mon 8th Oct	5	£239	£60

Price Includes:

- Half Board Accommodation
- Excursions to Holy Island, Hexham & the Roman Wall plus Durham City (en-route)

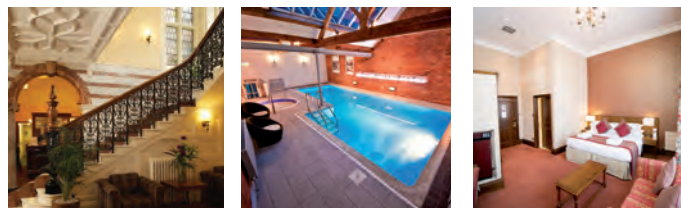


Carlisle and The Lake District

Home of Beatrix Potter, dramatic landscapes and a fascinating history, the Lake District is England's largest National Park, famous for its lakes, forests and mountains including Scafell Pike, the highest in England. It also boasts the deepest and largest lakes in England, Wastwater and Windemere. Our base for this tour is Carlisle, a city and county town of Cumbria that was established originally as a Roman settlement to serve the forts on Hadrian's Wall. Today the city lies at the heart of a wealth of historic and modern attractions. From Roman civitas to Norman stronghold, medieval market town to contemporary city, Carlisle offers a huge choice of attractions to enjoy including museums, art galleries, outdoor and indoor recreation, award winning parks and relaxing open spaces. Not to mention the gateway to the stunning Lake District.

Crown and Mitre Hotel

Located in the heart of historical Carlisle, the Crown and Mitre is one of the Peel group of hotels and offers the perfect mix of Edwardian grandeur, beautiful original features including a real log fire and elegant sweeping staircase plus all the comforts of home to create a relaxed and friendly atmosphere. The hotel boasts 94 bedrooms, all with en-suite facilities, LCD televisions with freeview, tea/coffee making facilities and hairdryer. Amenities include restaurant, two bars, indoor swimming pool and Jacuzzi. A lift serves most bedrooms. (Please note no entertainment during this tour)



Departure Date	No of Days	Holiday Price	Single Supp.
Mon 13th Aug	5	£265	£60

Price Includes:

- Half Board Accommodation
- Excursions to Ullswater and Keswick

from
£89



Norfolk **Great Yarmouth**

The popular coastal town of Great Yarmouth is East Anglia's top seaside venue. Set on fifteen miles of wide, flat golden sand with a lively promenade, the town boasts a wealth of excellent entertainment and recreational facilities, sports and shopping. There are two piers, a model village, Butterfly Centre and Sealife Centre to name but a few. Take a stroll along the promenade or take a ride in one of the unique horse-drawn landaus. At night the resort is illuminated and is renowned for its live entertainment with a wide variety of shows and concerts. The main shopping streets can be found just off the ancient harbour and offer a pleasant mix of high street stores and traditional seaside shops. The miles of golden sandy beaches have won numerous awards for cleanliness and both the attractive Anchor Gardens and St. Georges Park provide seating for moments of relaxation.



New Beach Hotel

One of the Leisureplex group of hotels, the New Beach Hotel is ideally located in Great Yarmouth's most central location, on the sea front opposite the Britannia Pier and adjacent to the shops and resort amenities. The hotel boasts 75 bedrooms, all of which are equipped with bath or shower and WC, central heating, tea/coffee making facilities, internal phone, hairdryer and TV with radio channels. Facilities include a spacious cocktail bar/lounge, magnificent restaurant, large dance floor and entertainment most evenings. There is free wi-fi in public areas and a small lift serves most rooms.

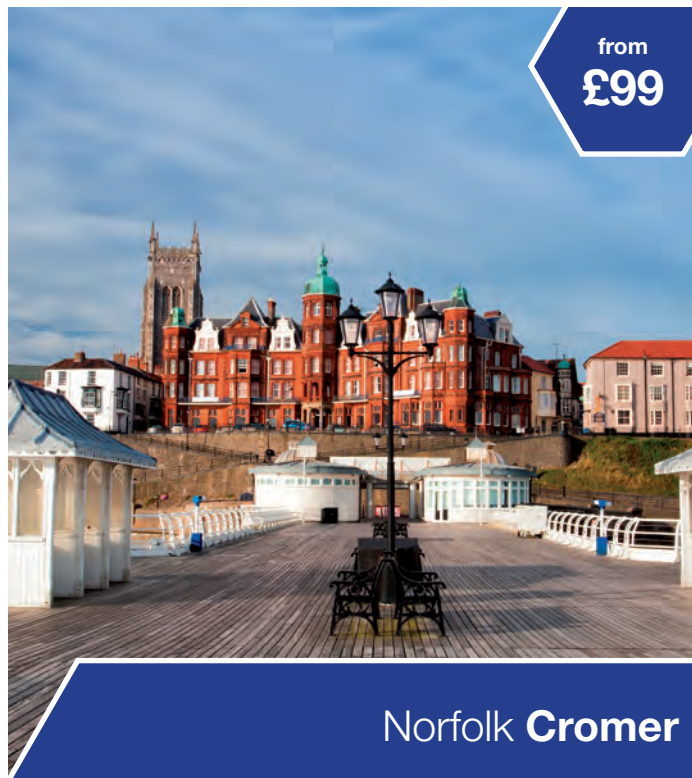
Departure Date	No of Days	Theme	Board Basis	Holiday Price	Single Supp.	Sea View
Fri 2nd March	3	Cabaret	Half Board	£89	Nil	£8
Mon 26th Mar	5	Spring Breakaway	Half Board plus one lunch	£189	Nil	£16
Sat 30th Jun	8	-	Half Board	£399	£63	£42
Sun 16th Sep	7	-	Half Board	£295	£54	£36
Mon 22nd Oct	5	Autumn Breakaway	Half Board plus one lunch	£195	£28	£16
Sun 23rd Dec	5	Christmas	Half Board plus two lunches	£399	£28	£16

Price Includes:

- Accommodation/Board as specified (Spring Breakaway 26 Mar also includes complimentary glass of wine, beer or a soft drink with dinner each evening)
- Excursions to Norwich and Lowestoft (5 days) plus Norfolk Broads (7&8 days)

Itinerary may be subject to change on themed breaks

from
£99



Norfolk Cromer

Set amidst the pleasant countryside of North Norfolk, Cromer is a vibrant town with a wide variety of attractions. The quaint narrow Victorian streets are home to some delightfully atmospheric pubs and there is a wealth of traditional seaside shops, restaurants and galleries. Once a small fishing village, Cromer became a distinctly upper class holiday resort during the Victorian era when it became a favourite destination for royalty. Full of character, narrow twisting streets and a lovely promenade overlook its sandy beach. Relax in the colourful gardens or take advantage of one of the many leisure activities on offer including bowling green, tennis courts, pitch and putt or maybe take in a show at the famous Pier Pavilion. As you would expect of a seaside town, Cromer is rich in fishing heritage and is world famous for its tasty crabs. The town has a proud tradition of the RNLI service and it has been said that the lifeboat is the lifeblood of Cromer – the museum offers a great insight into the service's past history.

Hotel De Paris

A delightful and unusual Grade II listed building, the three star Hotel de Paris occupies one of the finest positions in Cromer, close to the shops and historic parish church and overlooking the beach and pier. The delightful restaurant is split into two sections with interesting stained glass windows and a small dance floor with entertainment most evenings. Other facilities include a magnificent reception lounge with splendid architectural detail, attractive bar overlooking the sea, small TV lounge and games room with pool, table tennis and darts. There is a lift in the hotel (although there are steps throughout and some bedrooms are accessible via stairs). All bedrooms are equipped with bath or shower and WC, tea/coffee making facilities, hairdryer and Freeview TV with radio channels.

Departure Date	No of Days	Theme	Board	Holiday Price	Single Supp.	Sea View
Fri 2nd Feb	3	-	Half Board	£99	Nil	£8
Mon 5th Mar	5	Spring	HB +1 lunch	£185	Nil	£16
Sat 19th May	5	-	Half Board	£265	£36	£24
Sun 29th July	7	-	Half Board	£379	£54	£36
Wed 3rd Oct	5	Autumn	HB +1 lunch	£215	£28	£16

Price Includes:

- Accommodation as specified (Spring Breakaway includes complimentary glass of wine, beer or a soft drink with dinner each evening)
- Excursions to Norwich and North Norfolk Coast (5 & 7 days only).

only
£239



Thursford Christmas Spectacular

One of the largest shows of its kind in Europe, Thursford Christmas Spectacular is an event not to be missed. Set in the magical surroundings of mechanical organs and fairground carousels, with a cast of 130 professional singers, many of whom are West End performers, the three hour performance delivers an extravaganza of non-stop singing, dancing, music, humour and variety. It is a fast moving celebration of the festive season featuring a mix of both seasonal and year round favourites, with famous and much loved chart toppers being sung alongside traditional carols.

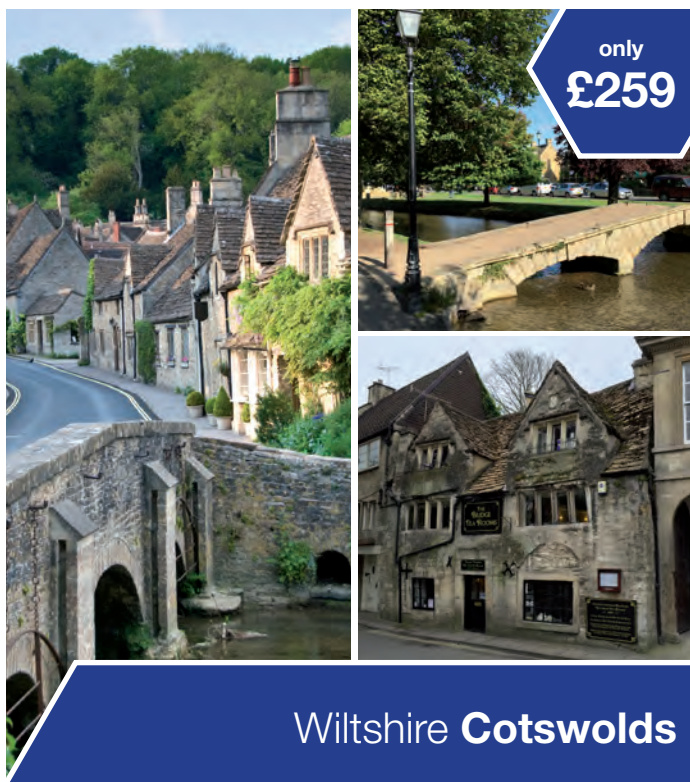
(Accommodation for this tour will be at the Hotel de Paris, Cromer)



Departure Date	No of Days	Holiday Price	Single Supp.	Sea View
Fri 30th Nov	4	£239	£21	£12

Price Includes:

- Half Board Accommodation
- Entrance Ticket to Thursford Christmas Spectacular



only
£259

Wiltshire Cotswolds

The Cotswolds are a range of hills in the 'Heart of England' and are designated as an Area of Outstanding Natural Beauty. Covering an area of almost 800 square miles in total, the spine of the Cotswolds runs through six counties particularly Gloucestershire, Oxfordshire and Warwickshire. The area is steeped in history and characterized by attractive small towns and villages built of the underlying honey coloured limestone which was locally quarried by hand and used for humble cottages and mansions alike. Many of the villages have undertaken no change for 300 years and are now marvelled at for their perfect preservation and beauty that only exists in this most unique of regions.

Swindon Marriott Hotel

One of the finest hotels in Swindon, the stylish four star Swindon Marriott Hotel is located on the outskirts of the historic old town. Stylish and informal, the hotel has a warm and welcoming atmosphere with a genuinely friendly service. All guest rooms are luxuriously appointed and offer everything you need including en-suite bathroom and TV with satellite stations. The hotel also boasts a superb leisure club with indoor heated swimming pool, spa bath, sauna, steam room and gym plus a health and beauty salon (charged extra). Surrounded by lush woodlands, the Marriott offers an ideal location at the gateway to the Cotswolds. (Please note no entertainment during this tour).

Departure Date	No of Days	Holiday Price	Single Supp.
Thu 4th Oct	5	£259	£80

Price Includes:

- Half Board Accommodation
- Excursions to Bath and Bradford on Avon plus Stratford upon Avon and Burton on the Water en-route (Optional excursion to Oxford – extra charge & subject to participating numbers)



from
£265

Somerset Weston Super Mare

With all the facilities of a traditional seaside town, Weston Super Mare is ideally positioned on the coast of the West Country. With views across the Bristol Channel to South Wales, it is the perfect base to explore the stunning scenery of the Mendips including the famous Cheddar Gorge. The nineteenth century saw Weston develop from a tiny village of around one hundred inhabitants to a thriving Victorian seaside resort. Today visitors can enjoy a wealth of attractions including shopping centres, the famous Winter Gardens plus big name artists performing at the Pavilion Theatre, Sealife Centre and the magnificent Grand Pier which was completely rebuilt in 2010. Weston's narrow streets are home to a variety of antique and craft shops. Relax on the clean sandy beach that stretches for over a mile, or enjoy the stunning floral beauty of Grove Park and Prince Consort Gardens.

New Ocean Hotel

With a warm welcome and excellent service, the New Ocean is a family run hotel situated opposite Weston's famous Marine Lake and affording panoramic views over Weston Bay and beyond. Just a few minutes stroll to the town centre and gardens, it boasts an unrivalled position in the promenade. The Ocean restaurant offers a varied menu and prides itself on freshly prepared dishes that combine the best of both traditional and modern cuisine. There is a large dancefloor with regular entertainment in the comfortable bar/lounge with a fully stocked and licensed bar open throughout the day and late into the evening. All bedrooms are equipped with full modern en-suite facilities, direct dial telephone, flat screen digital TV, hairdryer and hospitality tray. Many bedrooms have level access from the lift.

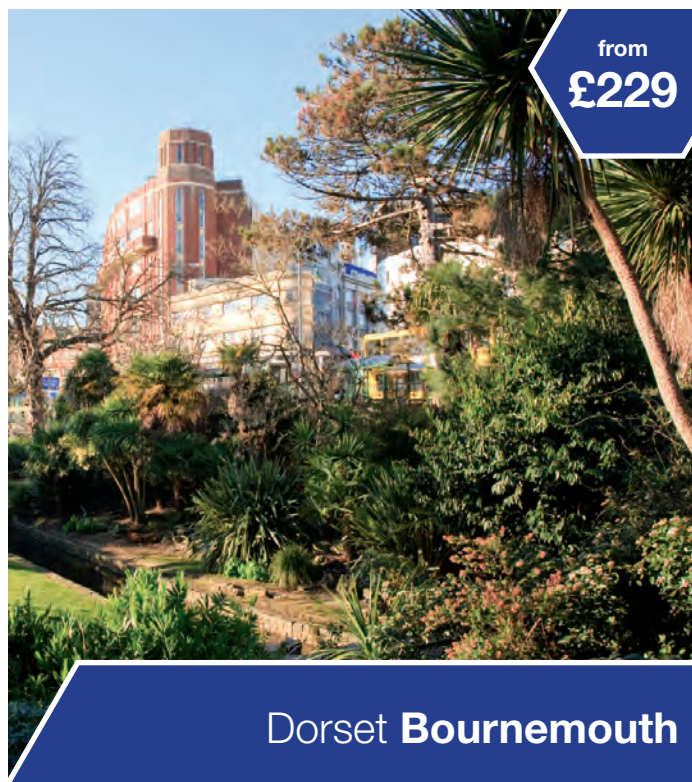
Anchor Head Hotel

Splendidly situated between Weston's two piers & close to the boating slipway and a small beach, the promenade walk begins right next to the hotel. The Anchor Head hotel has 52 en-suite bedrooms, all with tea/coffee making facilities, hairdryers and T.V. The hotel also features an attractive lounge and delightful bar with dance floor where entertainment is provided most evenings. The lift serves all floors with a few stairs to the restaurant.

Departure Date	No of Days	Hotel	Board Basis	Holiday Price	Single Supp.
Mon 18th Jun	5	New Ocean	Half Board	£265	Nil
Mon 23rd Jul	5	New Ocean	Half Board	£285	Nil
Sun 9th Sept	7	Anchor Head	Half Board	£335	£54

Price Includes:

- Half Board Accommodation
- Excursions to Bath and Cheddar Gorge (5 days) plus Wells and Street 7 days
- Anchor Head Hotel sea view supplement £36 per person



Dorset **Bournemouth**

With seven miles of golden sandy beach and clear blue seas, Bournemouth has become a vibrant, cosmopolitan town boasting an incredible variety of shops, restaurants and nightlife. Often described as the 'Garden City by the Sea', Bournemouth is situated on top of spectacular chalk cliffs and offers an array of award winning clifftop gardens including the Alum Chine Gardens and Boscombe's Italianate Gardens. A shopper's paradise, there are a variety of department stores and High Street names whilst Westover Road, also known as the Bond Street of Bournemouth, has a selection of smaller retailers along a tree lined boulevard. The resort offers a wealth of entertainment for all ages at it's top venues including the Bournemouth International Centre and Bournemouth Pavilion whilst other attractions include the Oceanarium, Boscombe Surf Reef and an array of watersports. The town's latest attraction is the Bournemouth Eye, a tethered balloon which takes visitors to a height of five hundred feet giving unprecedented views over the town and surrounding countryside.

Devon Towers Hotel

Recently upgraded to a three star hotel, the Devon Towers is ideally located on Bournemouth's West Cliff, close to the seafront, International Centre, shops and pier. The hotel offers an attractive entrance lounge, delightful bar lounge with TV and a spacious entertainment room with dance floor where entertainment is provided most evenings. There is a lift to all floors (a few steps to some rooms) and free wi-fi in public rooms. The Devon Towers boasts sixty bedrooms, all of which have heating, bath or shower and wc, tea/coffee making facilities, hairdryer and freeview TV with radio channels.

Departure Date	No of Days	Theme	Board Basis	Holiday Price	Single Supp.
Sun 19th Aug	7	-	Half Board	£359	£54
Mon 29th Oct	5	Autumn	HB +1 lunch	£229	£28

Price Includes:

- Accommodation as specified
- Excursions to the Swanage, Poole and the New Forest



Dorset **Weymouth**

One of the UK's most beautiful seaside resorts and blessed with one of it's sunniest and warmest climates, Weymouth offers a huge amount of attractions and is ideally placed for exploring the beautiful county of Dorset. This classic seaside resort, with it's idyllic harbour nestles perfectly alongside the 'Isle' of Portland. It's fine Georgian seafront is an impressive backdrop to the long arc of fine, golden sand whilst the beach and Esplanade, historic harbour, marina and nature reserve encircle the town centre, creating a resort that is both modern and traditional. Standing on Weymouth's Esplanade, the Weymouth Pavilion offers a wide range of exciting shows and events to suit all ages.

Berkeley Hotel

An original Georgian listed building, the Berkeley Hotel is centrally located on the seafront offering stunning views of Weymouth Bay, across to Portland Harbour and the rugged Dorset cliffs. The hotel offers 51 en-suite bedrooms, all of which are equipped with hospitality tray, colour TV and hairdryer. A lift serves all floors (a few rooms on the first floor are accessed by a flight of stairs). Situated on the lower ground floor and with lift access, the fresh and bright dining room offers freshly cooked meals at breakfast and dinner with a varied menu that changes daily. There is a large bar with dancefloor and the hotel also offers regular live entertainment.

Russell Hotel

Situated on the glorious seafront Esplanade of Weymouth, the Russell Hotel has a well deserved reputation for a warm welcome and great hospitality. Just a short walk from the popular town centre and a selection of attractions to suit all tastes, you can be sure of a relaxing break at this exclusively for adults hotel. The Russell boasts 95 bedrooms all of which are en-suite with shower or bath, flatscreen TV with freeview and tea/coffee making facilities. There is a lift, free wifi in public areas plus a relaxing bar and lounge area with nightly entertainment from top local performers including cabaret and dancing, cash bingo, quizzes and games.

Departure Date	No of Days	Hotel	Holiday Price	Single Supp.	Sea View
Mon 16th Apr	5	Berkeley	£189	£10	£16
Sat 2nd Jun	8	Berkeley	£379	£17.50	£28
Sat 14th Jul	8	Berkeley	£389	£17.50	£28
Wed 8th Aug	5	Russell	£299	Nil	On request
Mon 10th Sep	5	Berkeley	£275	£10	£16

Price Includes:

- Half Board Accommodation
- Excursions to: Bournemouth plus Poole and Swanage (5 days)
Swanage & Poole, Lyme Regis plus Dorchester & Portland Bill (8 days)

from
£185



Sussex Eastbourne

Sheltered by the rolling South Downs on one side and Beachy Head on the other, Eastbourne enjoys a sunny location on the south coast. Often described as one of England's more elegant resorts, the town grew as a fashionable tourist resort largely thanks to the Duke of Devonshire in the nineteenth century and has been a popular destination ever since. The promenade stretches for five miles and is lined with mainly Victorian hotels and the colourful, award winning Carpet Gardens. On the whole fairly uncommercialised there is a traditional pier with concerts at the Bandstand whilst shopping is varied, from the modern Arndale Centre to the Little Chelsea Quarter selling antiques, ceramics and jewellery.

Hadleigh Hotel

Ideally located on Burlington Place, just 60 yards from Grand Parade, Eastbourne's seafront and only minutes level walk from the Bandstand, Carpet Gardens and main shopping area, you are assured of a warm and personal welcome at the Hadleigh Hotel. Facilities at the Hadleigh include pleasant lounge areas, cocktail bar and lift. Entertainment and dancing can be enjoyed most evenings in the ground floor lounge with it's own dance floor. The Hadleigh has gained an enviable reputation for excellent traditional food served in the bright and modern restaurant. All 62 attractively furnished bedrooms offer en-suite facilities, colour TV, hospitality tray and central heating.

Haddon Hall Hotel

Enviably located on a broad tree-lined avenue at the seafront end of Devonshire Place, the Haddon Hall is situated across from the Bandstand and just a short stroll from the Victorian Pier. A firm favourite for many years, the Haddon Hall has a reputation for excellent food, producing traditional English cuisine with modern variations served in the tasteful restaurant. Entertainment can be enjoyed most evenings in the refurbished ballroom, now accessible by the lift and free wi-fi is available in the lounge area. All of the 75 bedrooms are modern and well-furnished and equipped with central heating, colour TV, tea/coffee making facilities and hairdryers.



Afton Hotel

A family run hotel, the Afton offers excellent service in friendly and comfortable surroundings. With a great location right on the seafront, opposite the Pier and close to the beautiful Carpet Gardens, there are many reasons to choose the Afton Hotel. There is a large

dance floor with entertainment most evenings, tastefully decorated lounges, two well stocked bars and a spacious air conditioned restaurant serving excellent home cooking. All bedrooms at the Afton are accessible by the lift and are well-furnished with hairdryers, tea/coffee making facilities, direct dial telephone, free wi-fi, flat screen TV with freeview channels and en-suite shower or bathroom.



Departure Date	No of Days	Hotel	Theme	Holiday Price	Single Supp.
Mon 12th Feb	5	Hadleigh	Entertainment Break	£185	Nil
Mon 5th Mar	5	Haddon Hall	-	£215	Nil
Mon 9th Apr	5	Haddon Hall	-	£239	Nil
Mon 7th May	5	Afton	-	£245	Nil
Mon 28th May	6	Haddon Hall	Spring Bank Holiday	£289	Nil
Mon 18th Jun	5	Afton	-	£259	Nil
Sat 23rd Jun	8	Haddon Hall	-	£435	Nil
Sat 4th Aug	8	Haddon Hall	-	£439	Nil
Sat 18th Aug	7	Hadleigh	Air Show	£379	Nil
Mon 24th Sep	5	Hadleigh	-	£265	Nil
Mon 15th Oct	5	Afton	-	£259	Nil
Mon 22nd Oct	5	Haddon Hall	Turkey & Tinsel	£279	Nil
Mon 5th Nov	5	Hadleigh	Turkey & Tinsel	£275	Nil
Sat 29th Dec	5	Hadleigh	New Year	£409	Nil
Sat 29th Dec	5	Afton	New Year	£389	Nil

Price Includes:

- Half Board Accommodation
- Excursions
 - 5 & 6 days - Beachy Head & Alfriston plus Brighton (excluding New Year - itinerary to be advised)
 - 7 & 8 days - As 5 days plus Battle & Hastings

Hadleigh Hotel Entertainment Break includes - Afternoon Tea (one day), Gala Dinner with glass of wine (one day), Themed Dinner (one day) Nightly Live Entertainment & Nightly Bingo
Airborne Show is August 16th to 19th, 2018
(Itinerary may be subject to change on themed breaks)

from
£179



Hampshire Hayling Island

Mill Rythe Holiday Village

Mill Rythe is the perfect place to take a well-earned break and you'll soon discover that the choice is yours to do as much or as little as you like. The fantastic activity programme at the resort can keep you busy all day or, if you prefer, just sit and relax til your hearts content. Facilities at the resort include the Boathouse Bar, large outdoor swimming pool, heated indoor pool with sauna, tennis court, petanque court, abseiling tower, crazy golf, fishing lake, beauty salon and gift shop. But it is at night that Mill Rythe really comes alive. On every break you will enjoy glittering entertainment from the Mill Rythe show cast, the resident five piece band, top visiting cabaret artistes and theatrical stage shows. All of the entertainment is enjoyed in the ballroom which is fully air conditioned and under the same roof as the restaurant, so only a short walk away. Before the glitz and glamour starts there is a game of bingo or quiz alternative and then, when the lights go down and the curtain goes up, expect a wonderful entertainment filled evening. The restaurant serves a hearty full English breakfast and a superb three course dinner. The comfortable bedrooms are equipped with en-suite shower or bath, central heating, TV and tea/coffee making facilities.

HALF PRICE BAR

(February, March, October & November departures only)

Each evening between 7.00 p.m. & midnight on selected 'House Drinks' including selected beers, wines, spirits & soft drinks.

Themes

We Love Dancing - Learn some new moves with lessons in Latin, Tango, Rock n Roll, Line Dancing and Ballroom. Other activities available or just pop your feet up and relax.

The Best of Movies & Musicals - Celebrate best-loved musicals from the West End, Broadway and the Silver Screen with show stopping cinema and live music from the Mill Rythe live show cast

Summer Breeze with Garden Party - Join us at the Garden Party with a complimentary glass of Pimms whilst enjoying a delightful afternoon matinee with a fabulous line-up. This is one party you won't want to miss.

Midweek Mish Mash - Featuring a wide variety of visiting cabaret acts, comedians, musicians, tribute acts and classic TV style game shows alongside a packed schedule of daytime activities

Turkey and Tinsel Festive Spectacular - Celebrate Christmas and New Year in one fabulously festive Showbreak with sparkling entertainment from the Mill Rythe show cast and visiting cabaret.

Departure Date	No of Days	Theme	Board Basis	Holiday Price	Single Supp.
Mon 26th Feb	5	Best of Movies & Musicals	Half Board	£179	Nil
Mon 26th Mar	5	Midweek Mish Mash	Half Board	£195	Nil
Mon 16th Jul	5	Summer Breeze with Garden Party	Half Board	£225	Nil
Mon 27th Aug	5	Midweek Mish Mash	Half Board	£225	Nil
Mon 8th Oct	5	We Love Dancing	Half Board	£219	Nil
Mon 26th Nov	5	Festive Spectacular	Half Board	£229	Nil

Price Includes:

- Accommodation as specified
- Excursions to Portsmouth and Chichester





Cornwall **St. Ives**

Typically Cornish, the streets of St. Ives are steep, narrow and winding, dotted with an abundance of tea rooms and galleries. Strikingly picturesque, the town acts like a magnet to artists who flock to its rocky headland and bustling harbour to catch the unique light. A fashionable resort and home to a branch of the Tate Gallery, St. Ives still manages to retain its intimate, old world charm as exclusive boutiques and restaurants sit happily alongside traditional crafts and quaint antique shops.

Cottage Hotel

Located in extensive grounds overlooking Carbis Bay and just 300 yards from the Beach, the Cottage Hotel offers excellent facilities including a large ballroom with entertainment most evenings, two bars, snooker table, TV lounge, outdoor swimming pool (heated May to September) plus restaurant and sun lounge which both have stunning views of the bay. All of the 80 bedrooms are equipped with central heating, bath or shower and WC, tea/coffee making facilities, hairdryer and TV. There are two lifts serving most bedrooms (entertainment room only accessible via stairs).

Departure Date	No of Days	Theme	Board	Holiday Price	Single Supp.	Sea View
Mon 30th Apr	6	-	Half Board	£275	£35	£20
Sat 7th Jul	8	-	Half Board	£429	£63	£42
Sat 4th Aug	8	-	Half Board	£435	£63	£42
Sun 14th Oct	7	Autumn	HB +1 lunch	£279	£42	£24

Price Includes:

- Accommodation as specified
- Excursions to Falmouth, Truro and Newquay



Cornwall **Looe**

Looe is a small coastal town in the South East of Cornwall, divided into two parts by the River Looe. East Looe is the main tourism centre - a collection of narrow streets lined with shops, cafes and pubs that lead through to the main town beach. Looe has managed to retain its small fishing fleet which return at high tide to off load their catch along the quayside at the busy fish market. Linked by a Victorian bridge, West Looe has its own individuality and character. A long harbour arm, the 'Banjo Pier' protects the east side of the mouth of the river whilst the west side is naturally protected by the rocky riverbank and coast line. Looe has a good selection of shops including some excellent arts and crafts and souvenir shops plus an excellent choice of Cornish Pasty shops, pubs and restaurants.

Portbyhan Hotel

In an unrivalled position right in the heart of Looe, the Portbyhan Hotel is just a short stroll from the town centre affording stunning panoramic views of the vibrant harbour. The hotel has in recent years undergone an extensive refurbishment leading to winning 'Best Individual Hotel' at the prestigious National Coach Tourism Awards. Situated on the roof of the hotel is the spectacular Portside brasserie and Terrace which is the perfect location to unwind and relax whilst the bar has a warm and welcoming feel, furnished with modern seating and serving a wide selection of wines, spirits and local guest ales. The restaurant offers an expertly chosen menu boasting hearty Cornish food and fresh local produce. The comfortable bedrooms are all equipped with en-suite bathroom, tea/coffee making facilities, LCD TV with freeview channels and hairdryer. There is entertainment most evenings, complimentary wi-fi access in public areas and a lift to all floors.

Departure Date	No of Days	Holiday Price	Single Supp.
Mon 26th Mar	5	£249	Nil
Mon 4th Jun	5	£349	Nil

Price Includes:

- Half Board Accommodation
- Excursions to Plymouth and Mevagissey

from
£299



Cornwall **Newquay**

Voted one of the country's favourite seaside towns, Newquay is Cornwall's premier holiday resort boasting no fewer than eleven beaches and arguable one of the finest coastlines in Europe. Britain's surfing capital, Fistral Beach is a surfers paradise hosting many competitions each year both national and international, whilst Tolcarne and Great Western are the most popular offering golden sand and safe bathing as well as stunning cliff walks. Dating back to the fifteenth century, there are hidden coves and smugglers pubs, a reminder of the colourful history of the area. Today, modern shops sit alongside quaint alleyways with an abundance of craft and antique shops and traditional tea rooms. Newquay's picturesque harbour is a hidden gem, where local fishermen still bring in their catch each day. Other attractions include golf, tennis, putting and bowls or make a visit to beautiful Trenance Gardens a variety of wildlife or Newquay Zoo and the Waterland Leisure Centre.

Eliot Hotel

In a central location, just 50 metres from the seafront and close to Great Western and Tolcarne Beaches, the three star Eliot Hotel is within easy walking distance of the shops and picturesque harbour. Facilities at the hotel include a bar lounge with dance floor, three relaxing lounges, games room with table tennis and pool, outdoor swimming pool (heated May to September), free wi-fi in public areas and ballroom with entertainment most evenings. The hotel boasts 76 bedrooms, all of which are fully equipped with en-suite bathroom, tea/coffee making facilities, hairdryer and freeview TV with radio channels. There is central heating throughout and a lift serves most rooms although all floors (including ground floor) are split level with some intermediate stairs.

Barrowfield Hotel

Awarded a Certificate of Excellence for the last four consecutive years, the Barrowfield Hotel is just a ten minute walk from the centre of Newquay and only 200 yards from Tolcarne Beach. Facilities at the hotel include heated indoor pool, Jacuzzi and sauna, as well as an enclosed outdoor terrace and patio. There is also a snooker and games room, free wifi in public areas and a lift. All of the 80 modern bedrooms are en-suite with bath or shower and are equipped with flatscreen TV and tea/coffee making facilities. A full English or Continental breakfast is served in the Hilgrove restaurant, as is the three course evening meal with waiter service. The Barrowfield offers live entertainment every evening including comedy, easy listening, music and dancing, cash bingo, quizzes and games.



Departure Date	No of Days	Hotel	Holiday Price	Single Supp.
Sun 24th Jun	7	Eliot	£349	£54
Fri 17th Aug	5	Barrowfield	£299	Nil
Sun 2nd Sep	7	Eliot	£339	£54

Price Includes:

- Half Board Accommodation
- Excursions to Truro, Falmouth and Padstow

from
£219



Devon Paignton

A popular family resort on the beautiful South Devon coastline, Paignton is part of the stunning English Riviera. Like all of Torbay, Paignton was frequented by the Victorians and some of the architecture still remains. A relatively large resort, the extensive level seafront bustles with a wealth of traditional seaside entertainments, Goodrington Promenade with its beautiful illuminated gardens, the sheltered harbour and the gently sloping, sandy beaches. There is an abundance of pavement cafes, pubs and restaurants, quality shopping and a host of visitor attractions to suit every taste including the Dart Valley Steam Railway, Palace Avenue Theatre and the famous Paignton Zoo, home to thousands of animals.



The Palace Hotel

Set in beautiful grounds, the Palace Hotel has the perfect location, right on the Esplanade, directly opposite Paignton seafront and a short flat walk to the town centre. Some of the facilities at the hotel include a spacious elegant restaurant, relaxing gardens and terrace overlooking gardens and seafront, health suite with large indoor heated swimming pool, Washington Bar with television and pool table plus entertainment each evening and a lift to the bedrooms. The Palaces 55 bedrooms are all en-suite and are equipped with colour television, hairdryer, trouser press and tea/coffee making facilities.



The Queens Hotel

Just 200 yards level walk from the town centre and seafront the Queens Hotel is the ideal location for your stay in Paignton. One of the excellent Duchy group of hotels, the Queens is tastefully decorated throughout and offers nightly entertainment, lounge with dance floor, fine restaurant and heated indoor swimming pool. There is a lift to all floors and all bedrooms are equipped with en-suite facilities, beverage tray and colour television.



Marine Hotel

Situated on a level position, directly opposite Paignton seafront and a short walk to the town centre. The Marine hotel has 53 en-suite bedrooms that are airy, modern and light yet highly comfortable with a conservatory boasting panoramic view of Paignton seafront and hotel lounge for excellent entertainment. There is a lift to all floors and all rooms are equipped with beverage making facilities, television and hairdryers.

Departure Date	No of Days	Hotel	Theme	Holiday Price	Single Supp.
Mon 15th Jan	5	Palace	Cosy Break	£219	Nil
Mon 5th Feb	5	Palace	Cosy Break	£229	Nil
Mon 12th Mar	5	Queens	Cosy Break	£239	Nil
Mon 14th May	5	Queens	-	£269	Nil
Fri 1st Jun	5	Marine	Air Show	£289	Nil
Fri 13th Jul	8	Queens	-	£459	Nil
Mon 1st Oct	5	Marine	-	£269	Nil
Mon 15th Oct	5	Queens	-	£259	Nil
Mon 5th Nov	5	Palace	Turkey & Tinsel	£295	Nil
Mon 3rd Dec	5	Queens	Turkey & Tinsel	£279	Nil

Price Includes:

- Half Board Accommodation
- Excursions
5 days - Dartmouth and Teignmouth
8 days - as 5 days plus Plymouth

Cosy Break includes tea/coffee and biscuits on arrival, quiz or bingo with tea/coffee and biscuits each afternoon plus live cabaret every evening.

(Itinerary may be subject to change on themed breaks)

from
£209



Devon **Torquay**

Situated in a beautiful spot in South Devon, Torquay is often referred to as the 'English Riviera' due to its mild climate and the tropical feel to the resort. Nestling between the picturesque hills is the extremely pretty harbour, and it is here where many of the hotels are located. One of the south's premier resorts, there is always something to occupy in Torquay, with an excellent array of shops, parks and theatres, not to mention the beautiful, bustling harbour.

The Headland Hotel

One of Torbay's highest rated three star hotels, the elegant Headland Hotel belongs to the Duchy Hotels group and is situated in one of the most beautiful parts of Torquay on the English Riviera. Sitting majestically on the headland looking out to sea, it is set in two acres of magnificent grounds and offers stunning views across Torbay with numerous coastal walks nearby. Most bedrooms are accessible via the lift and are tastefully decorated with direct dial telephone, television and beverage facilities. The hotel also offers free wi-fi, outdoor heated swimming pool, sauna/multi gym, two spacious lounge bars, spacious restaurant, large dance floor, lift to most floors and quality entertainment every evening.

Belgrave Sands Hotel & Spa

Newly opened for the 2017 season, the Belgrave Sands is ideally located just 150 yards from the beach and a short, level walk to the town, harbour and theatre. Each of the elegant bedrooms is equipped en-suite bathroom with walk-in shower, large flat screen TV, digital safe, mini fridge, hairdryer plus complimentary tea and coffee making facilities. In the restaurant all dishes are prepared entirely in house with the finest of seasonal produce to make your dining experience one to remember. There is lift access to most rooms, free wi-fi as well as use of the spa and leisure facilities (extra charges may apply).



Departure Date	No of Days	Hotel	Theme	Holiday Price	Single Supp.
Mon 26th Feb	5	Headland	Cosy Break	£209	Nil
Mon 19th Mar	5	Belgrave Sands	Cosy Break	£255	Nil
Mon 30th Apr	5	Belgrave Sands	-	£289	Nil
Mon 7th May	5	Headland	-	£279	Nil
Mon 6th Aug	5	Headland	-	£319	Nil
Mon 22nd Oct	5	Belgrave Sands	-	£295	Nil
Mon 26th Nov	5	Headland	Turkey & Tinsel	£285	Nil

Price Includes:

- Half Board Accommodation
Cosy break includes tea/coffee and biscuits on arrival, bingo or quiz each afternoon with tea/coffee and biscuits plus live cabaret each evening)
- Excursions to Brixham and Newton Abbott

(Itinerary may be subject to change on themed breaks)



from
£189



Devon **Babbacombe**

Ideally located to enjoy all the delights of the English Riviera, beautiful Babbacombe Promenade offers stunning views across Lyme Bay and Portland Bill. The St. Marychurch shopping precinct is home to a quaint and varied selection of shops, bars and cafes whilst other visitor attractions include Babbacombe Cliff Railway, the famous Model Village and Babbacombe Theatre, not to mention the beautiful beaches and stunning coastal walks offering miles of breathtaking scenery and wildlife.

Hotel De La Mer

Ideally located at the St. Marychurch end of Babbacombe Road, the family run Hotel de la Mer offers a warm and friendly welcome. The De la Mer prides itself on its service and offers 27 en-suite bedrooms, all of which are equipped with central heating, tea making facilities, hair dryer, digital TV and radio. There is a licensed fully stocked bar, large dance floor and regular entertainment. The chefs at the hotel are passionate about using fresh local produce which is served in the bright, comfortably furnished dining room by friendly staff. (No lift at this hotel)

Departure Date	No of Days	Theme	Holiday Price	Single Supp.
Mon 19th Feb	5	-	£189	Nil
Tue 10th Apr	5	-	£239	Nil
Sat 26th May	5	-	£259	Nil
Mon 11th Jun	6	-	£299	Nil
Sun 16th Sep	5	-	£255	Nil
Wed 21st Nov	5	Turkey & Tinsel	£245	Nil

Price Includes:

- Half Board Accommodation
- Excursions to Sidmouth, Teignmouth and Newton Abbott



from
£219

Devon **Exmouth**

With golden sands, colourful gardens and a bustling harbour, Exmouth has been a popular tourist destination since Georgian times. A range of activities are available along it's two miles of promenade including amusements, boating and crazy golf plus dancing and entertainment in the Exmouth Pavilion. The town itself offers excellent shopping facilities including an indoor market and a wide variety of Georgian pubs and quality restaurants serving exceptional local produce. Other attractions include the Country Life Centre, a model railway and boat rides along the estuary.

Cavendish Hotel

Ideally situated on Exmouth's level seafront, close to the golden sandy beach and just a few minutes walk from the shops, the Cavendish Hotel offers pleasant lounges, games room, bar lounge with dance floor and entertainment most evening and a lift to most rooms. All of the 76 bedrooms have central heating and en-suite bathroom plus hairdryer, TV with radio channels and tea/coffee making facilities.

Departure Date	No of Days	Theme	Board	Holiday Price	Single Supp.	Sea View
Wed 18th Apr	5	Spring	HB +1 lunch	£239	£28	£16
Sun 30th Sep	7	-	Half Board	£299	£54	£36
Mon 12th Nov	5	T & T	HB +2 lunches	£219	£28	£16

Price Includes:

- Accommodation as specified
- Excursions to Sidmouth, Teignmouth and Dawlish



North Devon **Ilfracombe**

With a mild climate and stunning scenery, Ilfracombe is the premier resort in North Devon. A unique and unusual resort, it is the oldest holiday destination in this region, nestling amongst small hills and cliffs surrounding the picture perfect harbour. The harbour was built in the fourteenth century to accommodate a small fishing fleet but the town came to prominence as a holiday resort in the middle of the nineteenth century when the Victorians cherished its natural beauty. The famous Tunnels beaches are close to the hotel, the tunnels cut into the rock to allow access to the beaches in the 1820s by a group of Welsh miners. The town centre provides excellent shopping with a mix of well known stores and many antique and gift shops along the narrow backstreets. Ilfracombe has some delightful parks and gardens, a Victorian bandstand plus stunning coastal walks. Why not take a boat trip to magical Lundy Island, uniquely peaceful and unspoiled

Imperial Hotel

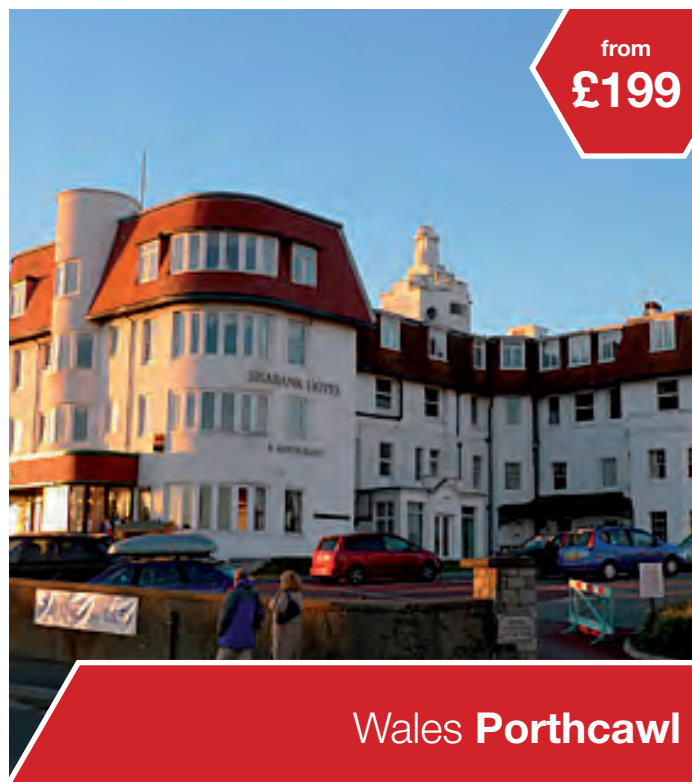
With arguably one of the best positions in Ilfracombe, the Imperial Hotel is close to the Tunnels Beaches and shops, and a short walk from the harbour opposite the splendid Landmark Theatre and conference centre. This three star hotel boasts extensive lounge areas including television lounge and sun lounge, attractive cosy bar and entertainment with dance floor and entertainment most evenings. The lift serves most rooms (a few additional stairs to some rooms), there is free wi-fi in public rooms and central heating throughout. All of the 104 bedrooms are equipped with bath or shower and wc, tea/coffee making facilities, internal telephone, hairdryer and TV with radio channels.

Departure Date	No of Days	Theme	Board Basis	Holiday Price	Single Supp.	Sea View
Sat 21st Apr	5	Spring	HB +1 lunch	£195	£28	£16
Sun 15th Jul	7	-	Half Board	£339	£54	£36
Sat 18th Aug	5	-	Half Board	£259	£36	£24

Price Includes:

- Board as specified
- Excursions to Barnstaple, Bideford and Woolacombe

Itinerary may be subject to change on themed breaks



Wales **Porthcawl**

Just a short drive from the beautiful cities of Swansea and Cardiff, Porthcawl lies on a beautiful stretch of coast with sandy beaches and rocky cliffs, an appealing combination of countryside and seaside that is filled with, and surrounded by attractions for the whole family. Porthcawl was originally a port for the iron and steel industries and still retains some interesting features from this period. In the late nineteenth century it was transformed into an attractive seaside resort. Now, famous for its many golf courses, a rocky promontory with spectacular sea views separates the Royal Porthcawl golf course from the main part of the town including the harbour and expansive sandy beaches, two of which have been awarded blue flags for excellence. Just a short walk from the hotel, the town centre has an attractive high street with a variety of shops whilst the striking Grand Pavilion offers a wide variety of top class entertainment including theatre, comedy, variety and musicals.

Seabank Hotel

Magnificently located on the seafront with outstanding views from all public rooms and many of the bedrooms, this landmark building commands coastal views to the east, south and west, yet is only a short walk from the centre of Porthcawl. The three star Seabank Hotel boasts 89 bedrooms, all of which are equipped with tea/coffee making facilities, internal telephone, hairdryer and TV with radio channels. All bedrooms have bath or shower and WC and most have a trouser press. Facilities at the Seabank include attractive ground floor restaurant, spacious split level cocktail bar lounge, air conditioned entertainment suite complete with bar, dance floor and entertainment most evenings plus a further two small lounges with sea views. There is free wi-fi in public areas and the lift provides level access to most bedrooms (few stairs to some front rooms).

Departure Date	No of Days	Theme	Board Basis	Itinerary	Holiday Price	Single Supp.	Sea View
Mon 19th Mar	5	Spring	HB +1 lunch	1	£199	Nil	£16
Sat 30th Jun	5	-	Half Board	1	£269	£36	£24
Mon 19th Nov	5	T & T	HB +2 lunches	2	£229	£28	£16

Price Includes:

- Accommodation as specified
(Spring Breakaways also include complimentary glass of wine, beer or a soft drink with dinner each evening)
- Excursions-
Itinerary 1 Swansea and Cardiff
Itinerary 2 This tour will include two excursions (destinations to be advised)
(Itinerary may be subject to change)

from
£225



Wales Tenby

Probably the most iconic, quaint and charming seaside town in Wales, Tenby was awarded a bronze award for the best UK coastal resort at the British Travel Awards in 2013. The original town of Tenby was called 'Dinbych y Pysgod' in Welsh or 'little town of fishes' and was established by the Normans as a fortified town. Most of the old town walls still remain today and, with the narrow cobbled streets and medieval houses serve only to add to Tenby's charm. The town became a popular seaside resort during Georgian and Victorian times. Today the centre of Tenby is a maze of narrow little streets brimming with quirky shops, bars and restaurants. Attractions include the three great beaches, each with its own character and all facing a different direction, Tenby Museum and Art Gallery on Castle Hill, the oldest independent museum in Wales and the National Trust owned Tudor Merchants House. There are also two golf courses plus numerous water sports including mackerel fishing trips.

Clarence House Hotel

Established in 1938, the Grade II listed Clarence House Hotel has been under the personal supervision of the Phillips family for over seventy years. The hotel is superbly situated in the centre of the Esplanade enjoying panoramic views of the South Shore, St. Catherine's Island, Castle Beach, Caldey Island, South Beach and Giltar Point. Facilities at the Clarence House include a quiet lounge, Seagull Bar, the tranquil Rose Garden and Caldey View Terrace, the ideal spot to watch the world sail by. The comfortable dining room offers a choice of home cooked cuisine and there is entertainment most evenings. There is a lift to all floors and all 76 bedrooms are en-suite with colour TV and tea/coffee making facilities. Many bedrooms have either sea front views or look out over the walled garden to the rear of the hotel. **The hotel also offers 'Happy Hours' daily from 12 – 2pm, 5pm – 6pm and 8pm – 9pm (Residents-only Bar from 7pm)**

Departure Date	No of Days	Theme	Holiday Price	Single Supp.
Mon 26th Mar	5		£225	Nil
Mon 21st May	5	-	£275	Nil
Sun 22nd Jul	7	-	£365	Nil
Sun 19th Aug	7	-	£379	Nil
Mon 10th Sep	5	-	£289	Nil
Mon 22nd Oct	5	-	£249	Nil
Mon 12th Nov	5	Turkey & Tinsel	£249	Ni

Price Includes:

- Half Board Accommodation
- Excursions to St. Davids, Haverford West and Saundersfoot (5 days) plus Carmarthen (7 days)





from
£109

Wales Llandudno

Uniquely situated on a rugged coastline between the Great and Little Ormes and overlooking the Irish Sea, Llandudno lies at the foot of Snowdonia National Park and is the largest resort in Wales. Boasting two beaches, the award winning shingle North Shore and the quiet sand-duned West Shore, Llandudno has become known as the 'Queen of the Welsh Resorts' having retained its Victorian elegance with an immaculate seafront and carefully preserved architecture. The Grade II listed pier offers an array of attractions including shops, cafes and amusements. Enjoy a ride on the Llandudno cable car rising 679 feet up to the summit of the Great Orme and take in the spectacular panoramic view of the bay and out towards the Conwy Estuary. One of Wales' premier shopping destinations, you'll find a mix of modern malls and delightful speciality shops in and around its canopied streets as well as award winning restaurants and tea rooms.

Evans Hotel

A warm welcome awaits at the friendly, family run Evans Hotel. Located in a quiet position and on the level, the hotel is just a short stroll from the town centre and just 400 yards from the Promenade and all its attractions. There is a lift to all floors and all bedrooms are equipped with modern en-suite facilities, hairdryer, flat screen digital freeview TV and complimentary tea, coffee and hot chocolate making facilities. The tastefully furnished dining room is complemented by a friendly service and excellent food freshly prepared each day. Entertainment at the Evans is regular and varied, or alternatively relax in the quiet lounge or fully equipped games/snooker room. Wi-fi is available in parts of the hotel and there is central heating throughout.

Price Includes:

- Half Board accommodation (Christmas and New Year – Full festive programme)
- Excursions : Itinerary 1 – Snowdonia and Anglesey
Itinerary 2 - Caernarfon and Snowdonia

Please note there will be no excursions on 3 & 4 day breaks to allow free time in Llandudno.

Special Bar - Half price drinks nightly between 8.00 pm and 10.30 pm (house brands only) 5th February and 5th March only.

Home Nations - A celebration of the four nations of the United Kingdom
Extravaganza - The resort is taken back to the Victorian era with period costumes, vintage vehicle rallies and street parades

Around the World – Take a journey around the world with the Evans Hotel

Llandudno & Chester – A chance to experience Wales on a weekend break with a visit to Chester

Christmas Fayre – One of the largest Christmas markets in Wales

Conwy Viking Medieval Market – An event entirely filling the whole of the medieval walled town and castle of Conwy (coach travel to Conwy provided one day)

(Itinerary may be subject to change on themed breaks)

Departure Date	No of Days	Theme	Itinerary	Holiday Price	Single Supp.
Mon 5th Feb	5	Special Bar	1	£169	Nil
Fri 16th Feb	3	Llandudno & Chester	-	£109	Nil
Mon 5th Mar	5	Special Bar	2	£199	Nil
Fri 23rd Mar	3	Llandudno & Chester	-	£109	Nil
Mon 2nd Apr	5	Easter & Around the World	1	£225	Nil
Fri 4th May	4	Victorian Extravaganza	-	£199	Nil
Mon 14th May	5	-	2	£235	Nil
Sun 17th Jun	6	-	1	£309	Nil
Fri 22nd Jun	4	Conwy Medieval Market	-	£185	Nil
Sun 8th Jul	6	-	2	£315	Nil
Fri 3rd Aug	3	Llandudno & Chester	-	£125	Nil
Fri 24th Aug	3	Llandudno & Chester	-	£129	Nil
Mon 27th Aug	5	-	1	£275	Nil
Mon 17th Sep	5	-	2	£255	Nil
Fri 28th Sep	3	Llandudno & Chester	-	£125	Nil
Mon 29th Oct	5	Turkey & Tinsel	1	£249	Nil
Fri 16th Nov	3	Llandudno Christmas Fayre	-	£119	Nil
Mon 26th Nov	5	Turkey & Tinsel	2	£249	Nil
Fri 7th Dec	3	Llandudno & Cheshire Oaks	-	£119	Nil
Sun 23rd Dec	5	Christmas	TBA	£409	Nil
Sat 29th Dec	5	New Year	TBA	£385	Nil



from
£269



Scotland **Troon**

Ayrshire is situated on the west coast of Scotland and is characterized by striking contrasts, offering rolling green hills, a varied coastline and picturesque beaches. A beautiful seaside town located to the north of Ayr with stunning views across to the Isle of Arran and Ailsa Craig, Troon is a charming destination and a popular holiday resort with a variety of facilities on the Esplanade. Curved into a bay, Troon beach is a long sweeping stretch of sand whilst the bustling harbour is home to Ayrshire's fish market and the Yacht Haven, one of the Clydes leading sailing centres. Troon could well be described as a golfers paradise, boasting an amazing seven golf courses including Royal Troon which regularly hosts the famous Open Championship.

South Beach Hotel

Ideally located directly facing the sea and famed for its friendly atmosphere, the superb family owned South Beach Hotel has 34 bedrooms, all of which are en-suite fully equipped with colour TV, radio and tea making facilities, some having stunning sea views. Adjacent to the conservatory, the main restaurant offers the very best of both Scottish and continental cuisine using the finest local produce.

In addition to the popular Millers Bar, the South Beach has an attractive lounge bar offering an outstanding lunch and supper menu whilst the superb residents lounge offers quiet relaxation (No lift at this hotel).

Departure Date	No of Days	Holiday Price	Single Supp.
Mon 4th Jun	5	£269	£40
Mon 6th Aug	5	£275	£40

Price Includes:

- Half Board Accommodation
- Excursions to Loch Lomond, Largs and Ayr



only
£329



Scotland **Kingussie**

Lying at the heart of the Cairngorm National Park, Kingussie is the traditional capital of Badenoch and a paradise for those who appreciate dramatic scenery and highland hospitality. Founded in the late eighteenth century by the Duke of Gordon and, at that time just a small hamlet, Kingussie is now a prosperous town offering a selection of cafes, restaurants and gift shops as well as glorious riverside walks and the award winning highland folk museum. The popular television series 'Monarch of the Glen' was filmed entirely in the upper Spey Valley, including many scenes featuring Kingussie.

Duke of Gordon Hotel

Looking out over the picturesque Spey Valley to Ruthven Barracks, the Duke of Gordon Hotel has a warm and welcoming atmosphere throughout and offers all the facilities and home comforts of a modern hotel combined with the traditional character of an old coaching inn. The hotel has 67 en-suite bedrooms, all with flat screen TV, direct dial telephone and tea/coffee making facilities. The splendour of the impressive Balmoral restaurant makes dining at the Duke of Gordon an experience not to be missed, with menus that are carefully selected and prepared to provide the best traditional Scottish fayre.

Departure Date	No of Days	Holiday Price	Single Supp.
Thurs 30th Aug	5	£329	£60

Price Includes:

- Half Board Accommodation
- Excursions to Fort William and Pitlochry



Isle of Wight

Located in the English Channel, the Isle of Wight is separated from the mainland by the Solent and offers superb sandy beaches, stunning countryside and exhilarating coastal walks. The island has several resorts which have been holiday destinations since Victorian times.

A firm family favourite, Sandown is the largest resort on the Isle of Wight and remains the island's principal resort offering a wealth of entertainment. Set around a sheltered bay of golden sandy beaches that stretch three miles to neighbouring Shanklin, other attractions include the Pier, which is right in front of our hotel, Browns Pleasure Park and the award winning Big Cat Sanctuary as well as the many shops, cafes and restaurants.

Shanklin is beautifully situated on the cliffs bordering the south east coast of the island and is sheltered to the west by high lying downs. The town is split, the old village at the top of the cliff and the new village close to the sea being connected by a cliff lift. A town of great character and charm, Shanklin offers many interesting small shops, amusements, restaurants and pubs. Shanklin Old Village is a perennial attraction where most of the picturesque cottages are clustered around the thatched 'Crab Inn'. Within walking distance is Shanklin's famous Chine, a dramatic fissure in the rock where a 45ft waterfall cascades down to the shore.

Bayshore Hotel, Sandown

Situated in a magnificent position on the seafront, opposite the beach and pier and close to the shopping centre. The hotel boasts a large dance floor with entertainment most evenings, cocktail bar and restaurant overlooking the sea, TV lounge, sun lounge and games room. There is free wi-fi in the public areas and a lift serves most rooms although all floors are split level. The 80 bedrooms all have en-suite bath or shower and wc, central heating, tea/coffee making facilities, hairdryer and TV with radio channels.

Shanklin Hotel, Shanklin

One of the best known hotels on the Isle of Wight, the Shanklin is situated in Shanklin town with superb views from the magnificent 'Starlite' restaurant and many of the bedrooms. Shanklin Old Village is a few minutes walk away and the beach is easily accessible via the nearby cliff lift. Facilities at the Hotel include a splendid bar, spectacular restaurant with dancefloor, entertainment most evenings, indoor swimming pool, whirlpool and sauna, games room and indoor bowls area. There is free wi-fi in public areas and the lift serves almost all bedrooms. All of the 89 bedrooms have central heating and en-suite bath or shower and WC, tea/coffee making facilities, telephone, hairdryer and TV.

Departure Date	No of Days	Hotel	Theme	Itinerary	Holiday Price	Single Supp.	Sea View
Mon 2nd Apr	5	Shanklin	Spring	1	£229	£28	£16
Sun 29th Apr	7	Bayshore	-	2	£309	£42	£24
Sun 3rd Jun	7	Bayshore	-	2	£345	£54	£36
Sun 1st Jul	7	Bayshore	-	2	£385	£54	£36
Sun 22nd Jul	7	Shanklin	-	1	£399	£54	£36
Sat 18th Aug	6	Shanklin	-	1	£339	£45	£30
Mon 29th Oct	5	Bayshore	Autumn	2	£219	£28	£16
Mon 12th Nov	5	Shanklin	T&T	3	£239	£28	£16

Price Includes:

- Half Board Accommodation
(Spring Breakaway 02 Apr and Autumn Breakaway 29 Oct include one lunch. Turkey & Tinsel Break includes two lunches)
- Excursions
Itinerary 1 -
Newport Market, Godshell, Sandown, Alum Bay and the Needles
Itinerary 2 -
Newport Market, Godshell, Shanklin, Alum Bay and the Needles
Itinerary 3 -
This tour will include two excursions. Destinations to be advised (Itinerary may be subject to change on themed breaks)



Bayshore Hotel



Shanklin Hotel



Jersey by Air **St. Helier**

A beautiful island with a relaxed, friendly lifestyle, Jersey's magical appeal has charmed its visitors for many years. Rich in heritage, there are constant reminders of its colourful history. Just 14 miles from the French coast, it has a continental feel while still being part of Britain. The scenery alone sets Jersey apart from other holiday destinations. From the sandy bays of the south to the rocky cliffs of the north; the narrow country lanes that take you through charming villages to the duty free shops in the bustling heart of St. Helier, there is always something to occupy and entertain.

The Mayfair Hotel

The Metropole is part of the Modern Hotel Group and is the perfect setting for all age groups. Conveniently located in St. Helier and just a fifteen minute walk from the beach, there's no wonder this three star hotel is a popular hotel in the Jersey capital. The hotel reception is the ideal place to meet friends and meet your Hotel Representative who's on hand to let you know about all the exciting things to do in Jersey. All bedrooms at the Mayfair are en-suite with flat screen TV, direct dial telephone, hairdryer, tea/coffee making facilities and 24 hour room service menu. There are a wealth of facilities on offer including the newly refurbished Sun Terrace, games room with a selection of arcade machines and pool table, heated indoor swimming pool, Jacuzzi and steam room, fully equipped gymnasium with some 21 independent exercise machine, lounge bar open throughout the day and lounge bar offering an extensive selection of drinks as well as tea, coffee and light bar snacks. There is a packed schedule of evening entertainment available at the Mayfair plus free wi-fi in the residents lounge and bar area. The hotel also has a lift and coffee shop.

Departure Date	No of Days	Holiday Price	Single Supp.
Sat 15th Sep	8	£595	On request

Price Includes:

- Transfers to/from local airport
- Door to door pick up service in Barnsley area
- Return flights to Jersey
- Resort transfers
- Half Board accommodation
- Island Tour

IMPORTANT - This holiday is protected under ATOL No. 0752 (Modern Holidays) for whom K.M. Motors Limited act as agents. This holiday is subject to an individual cancellation scale (ask for details)

DEPOSIT - A deposit of £100.00 per person is required for flight holidays arranged by Modern Holidays whose terms and conditions apply.

BALANCE - The balance is payable 60 days prior to departure



Isle of Man

Famed for its friendliness and laid-back warmth, don't be fooled by the size of the Isle of Man. Just 33 miles long and 13 miles wide, this tiny island has a rich past steeped in myths and legends and is home to an unusual variety of attractions; ancient fortresses, a working Victorian Railway, seas full of wrecks, fields full of rare orchids, the world's largest water wheel and of course, world class road racing events. The island also has its own parliament, laws, traditions, its own postage stamps, currency and Manx language, although English is the spoken language and sterling is accepted throughout. Douglas, the island's capital is the ideal spot from which to explore. It has a Victorian Promenade which overlooks the stunning crescent of Douglas Bay and there is plenty to occupy here including a busy harbour, shops, bars, cafes plus many historical buildings and the Douglas Horse Tram which runs along the seafront.

Chesterhouse Hotel

Ideally located on the seafront in Douglas and close to the town centre, facilities at the Chesterhouse Hotel include a lift, entertainment Amber Bar and Lounge plus the 'Shiraz' restaurant serving an excellent menu of traditional dishes whilst offering splendid panoramic views across the bay to the Irish Sea. There are 67 bedrooms, all of which are en-suite with TV, telephone and tea making facilities.

Departure Date	No of Days	Holiday Price	Single Supp.
Wed 13th Jun	6	£399	£62.50

Price Includes:

- Five nights half board accommodation
- Excursions - This tour will include one full day and two half day excursions around the island.

Important Customer Information

Room Allocation

Every effort will be made to provide precisely the kind of room you have booked and will endeavour to convey special requests to hoteliers. We must stress that we cannot guarantee any requests that are made.

Seat Allocation

Requests for particular seats can be made when booking. Whilst everything possible is done to confirm seating plans shown and to provide the seat numbers booked by clients in the positions indicated and published seating plans, we reserve the right to change should conditions necessitate and we cannot accept bookings conditional on the provision of specific seats.

Pick Up Points (within a limited area)

On our tours we offer a door to door service at a small charge. However this service is operated at our discretion and we reserve the right not to provide the service in the advent of excessive baggage or unreasonable demands being made of ourselves which would make this service uneconomical or impractical to run (please ask for details).

Special Diets

If you require a special diet you must inform us at least 4 weeks prior to your departure with a copy of that diet. This will be notified to the hotel of your particular holiday and any extra costs incurred must be paid to the hotel by yourself before departure from the hotel. We cannot guarantee hoteliers compliance with dietary requests.

Single Rooms

On any holiday there are only a limited number of single rooms. When a single room is available it may be subject to a supplementary charge and this will be shown on the brochure page.

Luggage

Please note that due to space limitations onboard the coach, the vehicle operating 'Door to Door' service and because of Health and Safety Regulations relating to our employees, you are asked to keep luggage to one medium sized suitcase per person together with hand luggage which can be stored safely under your seat on the coach. The only exception to this is when travelling on tours which require an overnight stay en-route to your holiday destination.

Passports

Photographic identification is required for travel to Jersey (eg passport or photographic driving licence)

Local Conditions

During local and national holidays and on certain days of the week, facilities such as theatres, art galleries, museums and shops may be closed. When travelling at the beginning or the end of the holiday season you may also find that resorts are quieter and that some of the facilities are closed.

Travel Insurance Important Information

K M Motors Ltd is an appointed representative of Arthur J. Gallagher Insurance Brokers Limited which is authorised and regulated by the Financial Conduct Authority. Registered Office: Spectrum Building, 7th Floor, 55 Blythswood Street, Glasgow, G2 7AT. Registered in Scotland Company Number: SC108909.

We only offer travel insurance from a single insurer – Europäische Reiseversicherung AG (ERV). This travel insurance is suitable for those who wish to insure themselves when travelling against the specified financial loss of unforeseen circumstances and events relating to your trip. A list of the covers and corresponding limits can be found below. Please see your policy document for further details. We have not provided you with any recommendation or advice about whether this product meets your specific insurance requirements. It is your responsibility to decide whether this policy suits your needs.

SIGNIFICANT EXCLUSION: If your medical condition cannot comply with the following terms then any claim related to that medical condition will not be covered:

For UK Travel (England, Scotland, Wales, Northern Ireland or Scilly Isles). You **DO NOT** need to declare your medical conditions; however, you must comply with the following;

1. You are not aware of any reason why the trip could be cancelled or cut short
2. You are not travelling: (a) against the advice of a medical practitioner (b) for the purpose of obtaining medical treatment (c) if you have been given a terminal prognosis
3. You are not receiving or awaiting tests, treatment or investigations for any illness or injury as a hospital day case or inpatient. Any claim arising from this illness or injury will not be covered
4. If you are on medication at the time of travel your medical condition must be stable and well controlled
5. You must notify Medical Screening immediately of any change in your medical circumstances between the policy issue date and time of departure.

For EU Travel (including The Channel Islands); the traveller **MUST** inform ERV via the health check phone line on 01403 288 423 if they or any person upon whose health the trip depends;

1. Has any existing or on-going medical condition(s)
2. Is taking any prescribed medication
3. Has or has had any medical condition(s) still requiring periodic review
4. Is awaiting any tests, treatment, investigation, referral or the results of these
5. You must notify Medical Screening immediately of any change in your medical circumstances between the policy issue date and time of departure.

This information is correct at the time of printing, but may be subject to change. Please refer to your policy document to check your cover.

Cover and Cost

Cover	Limit	Excess Payable
Cancellation	Up to £2,000	Excess:£50 Deposit only:£10
Curtailment	Up to £2,000	£50
Emergency Medical & Repatriation Expenses	Up to £2,000,000	£50
Missed Departure (not UK)	Up to £600	£50
Personal effects and Money	Up to £1,500	£50
	Up to total of £200 for valuables	£50
	Up to £200 for Lost Passport	£50
Luggage Delay	Up to £100	NIL
Personal Liability	Up to £2,000,000	NIL
Personal Accident	Up to £10,000	NIL
Legal Costs & Expenses	Up to £25,000	NIL

Important

You must take reasonable care to provide us with complete and accurate information to any questions we ask when you take out, or make changes to your policy. If you do not provide us with complete and accurate information which is subsequently disclosed, or comes to light after the commencement date of the insurance, your insurer may consider that you have misrepresented your risk and may have the right to amend, restrict or cancel your cover under this policy.

Cancellation Rights

If your cover doesn't meet your requirements, please let K M Motors know within 14 days of receiving your policy document and return all your documents for a refund of your premium. Any premium already paid will be refunded to You providing you have not travelled, no claim has been made or is intended to be made and no incident likely to give rise to a claim has occurred.

Claims

Full details of how to make a claim and how to appeal should your claim not be successful can be found in the policy document

Complaints

Should you have a complaint about the sale of your travel insurance policy, please contact The Branch Manager, Arthur J. Gallagher Insurance Brokers Ltd, 6th Floor, Temple Circus House, Temple Way, Bristol BS1 6HG. Should you remain unhappy with our final reply, you may have the right to refer your complaint to The Financial Ombudsman Service, Exchange Tower, London E14 9SR.

Financial Services Compensation Scheme (FSCS)

We are covered by the FSCS. You may be entitled to compensation from the FSCS if we cannot meet our obligations. This depends on the type of business and the circumstances of the claim. Further information about compensation scheme arrangements is available from the FSCS www.fscs.org.uk.

Fair Trading Agreement

Our fair trading agreement and important holiday information sets out clearly and simply the responsibilities which we at KM Motors LTD have to you and you in turn have to us when a contract is made between us. The contract is made when you make a booking and we accept it by written confirmation of the terms set out in this brochure. When signing the booking form for your holiday you will sign on behalf of yourself, and others named in your party, that you have read, understood and have accepted this Fair Trading Agreement and the Important Holiday Information provided in this brochure. Your obligation is to pay the price of the holiday and recognise your liabilities if you wish to alter the holiday or have to make a cancellation. On our part we have the obligation to provide you with the holiday you have booked. Our specification of that holiday and our terms are clearly stated in the brochure. Your contract is entered into with KM MOTORS LTD. This Fair Trading Agreement applies to all holidays sold from this brochure. Your holiday contract is subject to English law and jurisdiction.

Your contract with KM Motors Ltd

1. You Pay a Deposit

British Holidays £30 per person and £100 per person for all Jersey Holidays.

2. You Pay the Balance

The balance of your holiday cost must be paid via the office at which you made your booking not later than 6 weeks before the holiday departure day (8 weeks before on tours to Jersey & 4 weeks before on tours of 4 nights or less duration) if you book within the applicable balance due period you must pay the full holiday cost at the time of booking. If the balance is not paid in time we reserve the right to cancel your holiday, retain your deposit and apply cancellation charges set out in paragraph 4 (if you cancel your holiday)

3. If You Change Your Booking

If you wish to change your booking to another departure date in the 2018 holiday brochure we shall do our utmost to make the changes, provided written notification is received from the person who signed the booking form, not later than the date on which the original holiday cost was due for payment. This must be accompanied by a payment of £10.00 per person to cover administration cost. Any alteration made later than the original balance due date will be treated as a cancellation and will be subject to the cancellation charges set out below.

4. If You Cancel Your Holiday

You may cancel your holiday at any time provided that the cancellation is made by the person signing the booking form, and is communicated in writing to ourselves. As this incurs administration costs we shall retain your deposit and in addition, apply cancellation charges set out below:

	More than 42 days	Deposit
28 - 42 days	30%	
14 - 27 days	45%	
7 - 13 days	60%	
1 - 6 days	100%	
Departure Day	100%	

Note if the reason for cancellation is covered under the terms of an insurance policy, you may be able to reclaim these charges.

5. If You Have a Complaint

If you have a complaint during your holiday, please inform, in the first instance the supplier of the service and then inform our driver/courier, who will do his/her utmost to resolve the problem immediately. If the matter cannot be put right locally, you must complete a report form which is obtained from our driver/courier. Please follow this up within 28 days of your return home by writing to the customer relations officer, KM Motors Ltd, Wilson Grove, Lundwood, Barnsley, South Yorkshire, S71 5JS. It is therefore a condition of this contract that you communicate any problem to the supplier of the services in question and to our driver/courier whilst in resort and obtain a written report if you fail to follow this simple procedure we cannot accept responsibility as we have been deprived of the opportunity to investigate and rectify the problem.

6. Statutory Authorities

This brochure is issued subject to applicable Acts of Parliament and Government Regulations and the company reserves the right to modify itineraries to conform with any request from the competent authorities in the United Kingdom and any other sovereign state through which the tour runs.

7. Conditions of Carriage

When you travel on an aircraft, train or ship the conditions of carriage of that carrier apply and you are subject to National and International conditions which may limit or exclude liability. Your contract made under the terms of this Fair Trading Agreement is subject to English law and jurisdiction. Please note that facilities on board the coach may not be available from time to time through mechanical defect, but be assured that under such circumstances we will do our utmost to ensure that, wherever possible, facilities will be made available again as soon as practical, bearing in mind that we would not wish to interrupt the overall tour itinerary. The Public Service Vehicle (Conduct of Drivers, Conductors of Passengers) Regulations as amended 1990, apply to all coaches throughout any holiday in the UK, in the case of ferries or sea craft being unable to operate owing to inclement weather we will arrange other sea crossings as available.

8. Right of Refusal

We must point out that KM MOTORS LTD reserve the unconditional right to refuse booking or terminate a passenger's holiday in the event of unreasonable conduct which in our opinion is likely to cause distress, damage, danger or annoyance to other customers, employees, property or to any third party. This includes any passenger who fails to advise us of any medical condition or disability in accordance with paragraph 9 (below). If you are prevented from travelling as a result of such termination, our responsibility for your holiday thereupon ceases. Full cancellation charges will apply and we will be under no obligation whatsoever for any refund, compensation or loss you may incur.

9. People with Special Needs

We are keen to plan arrangements for your holiday so that special needs and requests can be accommodated as far as possible. Not all holidays in this brochure may be suitable for you, we want you to enjoy your holiday and will try to help you select an appropriate trip, it is essential that we are contacted prior to you making your booking, in order that special needs can be accommodated as far as possible. Please note requests for special menus/diets may incur an additional charge, which must be paid locally to the hotel concerned. Passengers who require one-to-one assistance must be accompanied by an able bodied person, as our tour managers are unable to offer the assistance of a personal nature which may be required.

10. Other Terms

A. you may not bring a pet or any other animal on a KM Motors Ltd Coach Holiday.

B. you may not play a music or media player on the coach.

C. you are responsible for ensuring that you are at the correct departure point at the correct time, and we cannot be liable for any loss or expense suffered by clients because of their late arrival at any departure point.

D. you must ensure that you have a valid passport or visas (if necessary) and we cannot be liable for any loss or expense suffered if you do not.

E. Although our vehicles have large luggage compartments, we have to adhere to regulations concerning the overall weight of fully laden vehicles. We would, therefore, ask you to restrict your luggage to one medium sized suitcase. It is a condition of travel that any items over and above this are notified to ourselves in writing and this includes collapsible wheelchairs.

Note battery driven chairs or vehicles cannot be accepted

It is your responsibility to make sure your luggage is on board the coach on which you are travelling. Please ensure that any instruction given by our driver/courier, at any time during the holiday, concerning luggage or personal effects are strictly adhered to. We would strongly recommend the holiday insurance offered in this brochure which provides cover in the case of loss or damage.

F. Smoking is not allowed on any KM Motors Ltd coaches. If you ignore this rule and thereby cause inconvenience, distress or disappointment to other passengers, you may be asked to leave the holiday. See paragraph 8 - Right of Refusal.

G. In the event of contact being made with KM Motors Ltd by the passenger on any subject where by the contained information in this brochure is changed or additional information given, for any reason, the passenger must ensure that the information given is confirmed to them in writing. No responsibility will be accepted for any loss, damage or disappointment if this procedure has not been followed.

H. Whilst every effort is made to adhere to stated times, there could be circumstances beyond our control such as weather and traffic conditions that may cause delay.

I. This brochure was accurate at the time of going to print, if we become aware of any changes our procedures are as shown in 'our promise to you' paragraph 3, 'if we change you holiday'.

J. Excursions are included in the price of most holidays and refunds cannot be made for passengers not wishing to go on these excursions.

K. Admission fees to buildings, grounds etc and guided tours are not included unless otherwise stated in the brochure.

11. Holiday Insurance

It is a condition of your contract with KM Motors Ltd that you should take out insurance to cover you in the event of illness, personal injury or death during the course of your holiday.

OUR PROMISE TO YOU

1. We Reserve Your Holiday

Your holiday is confirmed at the time of booking subject to space being available on the holiday of your choice.

2. Your Holiday Price

Our prices are fixed on August 23rd 2017 and are shown in the price panels on each page on a per person basis.

The price of your holiday is fully guaranteed and will not be subject to any surcharges. Unless specifically indicated in the holiday description, entrance fees, city guides and optional excursions are not included in the holiday price.

3. If We Change Your Holiday

The contents of this brochure are correct at the time of going to press. We reserve the right to make changes to the information contained in this brochure and will advise you of any changes affecting your holiday where those changes occur prior to booking. The arrangements for holidays in this brochure may require changes after a booking is made. Most of these changes are very minor but where they are significant we will notify you as soon as reasonably possible before your departure date. A 'significant change' is one that involves changing your departure date, resort area, town of departure, reducing the quality of the main hotel. Changing the location of any single overnight hotel does not constitute a 'significant change'. In the event of a 'significant change' you may decide to a) continue with the amended holiday b) accept an alternative holiday which we may offer to you or c) cancel your booking. If you choose (a) or (b) we will pay you compensation on the scale below. If you choose (c) we will refund all monies paid by you and compensate you as shown on the scale below. No other claims for compensation or expenses will be considered.

More than 21 days	Nil
14 - 21 days	£10 per person
0 - 13 days	£15 per person

4. If We Cancel Your Holiday

It is necessary for there to be a minimum number of passengers in order to operate a tour. If the minimum number is not achieved before the balance due date the tour could be cancelled. In certain circumstances, therefore, we may have to cancel your holiday, and if this should occur we will return to you all the money you have paid to us, or offer you a suitable alternative. However we will not cancel your holiday after the date on which the holiday balance was due unless;

1. you have not paid for your holiday in full
2. your holiday is influenced by threat of war, riots, civil strife, terrorist activity, industrial disputes, natural or nuclear disasters, fire, epidemic or health risk, technical problems to transport, closure or congestion of ports or similar event beyond our control. If we cancel your holiday at any time we are liable only for any monies you may have paid to us at the time of cancellation and the compensation payments detailed in paragraph 3.

5. What happens to Complaints

All complaints that are received are thoroughly investigated and customers are kept informed at each stage of the investigation. Sometimes the investigations can take time when awaiting a response from hoteliers. We can normally agree an amicable settlement of the few complaints we receive, if the complaint is found to be genuine. You may of course go to your county court or other suitable court.

6. Responsibility for Your Holiday

We accept responsibility for ensuring that all component parts of your holiday as described in this brochure are supplied to you to a reasonable standard and this includes optional excursions purchased through our employees. If any such part is not provided in the advertised manner, we will pay you reasonable compensation unless the non provision was due to circumstances which we could not predict and which were beyond our control such as adverse weather, road or traffic conditions or the matters referred to in paragraph 4 (2) across.

For all claims other than death or personal injury which result from improper performance of the contract by us in circumstances where you stay for the whole or part of the holiday, our liability is limited to the total cost of the holiday (less any insurance) per person.

You should also be aware that:

A. some hotel amenities (e.g. lifts, swimming pools) require servicing or cleansing and we cannot, therefore guarantee that they are always available. Other factors, such as weather or lack of demand can affect the provision of entertainment or outdoor amenities described in this brochure.

B. some excursion itineraries include the use of ferries and other forms of transport which can be affected by inclement weather and may have to be cancelled or arrangements changed. Wherever possible a suitable alternative excursion will be offered.

7. Personal Injury

(Whilst Participating in Arrangements Made by Us)

K M Motors Ltd has taken all reasonable and proper steps to ensure that proper arrangements have been made for all the holidays which are advertised in this brochure, including optional excursions offered by our employees and that the suppliers of all the services are efficient, safe and reputable. Whilst we have no direct control over the provision of these services to you by suppliers we will pay to our clients the equivalent of such damages as they would be entitled to receive under English Law in an English court for any personal injury to the client including illness or death, caused by the failure to perform or the improper performance of such services by our employees or any of our suppliers contracted or sub-contracted by us to provide any part of the arrangements for your holiday as described in this brochure and where such failure or improper performance is due to the fault of such person. We do not accept responsibility if the failure, death or personal injury is not caused by any fault of ours or of our suppliers or is caused by you or someone not connected with your holiday arrangements, or if the failure, death or personal injury is due to unusual or unforeseen circumstances which even with all due care we or our suppliers could not have anticipated or avoided.

Note We accept responsibility as stated above provided that;

A. All claims for personal injury are notified within 3 months of the return from holiday.

B. The injured client(s) assign to KM Motors Ltd any rights against a supplier or other person or party they may have relating to the claim.

C. They agree to co-operate fully with us should we or our insurers wish to enforce those rights which have been assigned to us to which we are subrogated.

D. Such payment is limited in the case of transport by water or air to a maximum of such sums as would be obtained under the provisions of the appropriate International Conventions. The assignment is necessary to enable us to try and recover from suppliers any compensation we have paid to clients by the fault of those suppliers. If we recover more than such compensation and costs, any excess will be paid to the injured client.

8. Personal Injury

(Unconnected with Arrangements Made by Us)

Where appropriate and subject to our reasonable discretion, we will afford general assistance to clients who through misadventure suffer illness, personal injury or death whilst travelling on a KM Motors Ltd holiday arising out of an activity which does not form part of the advertised itinerary nor part of the excursion offered through the company, and which is the responsibility of a third party. If assistance is provided we will limit any monies paid to £5,000 per booking form and in the event of there being a successful claim against a third party, or there being suitable policy(ies) in force our costs shall be recoverable from the clients concerned.

9. Other Terms

A. Our Delay Policy

In the event of a delay of more than 6 hours to the advertised time on any of our holidays, we will do our best to reduce your discomfort. However, all clients are strongly advised to take out Emerald Insurance cover offered in this brochure as it contains a comprehensive Delay Protection Plan offering financial compensation for delays extending beyond 12 hours.

B. Holiday Excursions

Sightseeing tours in cities and other places of interest are not included in the price unless specifically mentioned on the tour page, although sightseeing excursions will often be available from your driver/courier at additional cost. Optional excursions will operate subject to a minimum number of passengers wishing to partake.

C. Entertainment

Some of our hotels arrange additional entertainment which could include music, dancing, film shows, bingo etc. The nature and frequency of the entertainment presented is at the discretion of the hotel and therefore not guaranteed and could be withdrawn if there is a lack of demand or insufficient numbers in the hotel

D. Special Requests

We accept these on the understanding that they will be passed onto the hotel. Under no circumstances can we guarantee that such requests will be granted or that the hotel had, or is able to, provide the requested facilities.

Important Note

Compensation payments do not apply to changes caused by reason of war, or threat of war, riots, civil strife, terrorist activity, industrial action, natural or nuclear disasters, fire, technical problems to transport, epidemic or health risk, adverse weather conditions and similar events beyond our control.

This brochure was printed in September 2017

Your contract is with KM Motors LTD

Wilson Grove, Lundwood, Barnsley, South Yorkshire, S71 5JS

For Bookings Contact

52 Market Street, Barnsley, South Yorkshire, S70 1SN

Tel: 01226 245564